



BE-LOK INSTRUMENT FITTINGS
INC

DIN 2353 tube fittings

100% Factory Tested For Both Crack & Reseal



Engineering Expertise

@ www.be-lok.com

Introduction

BE-LOK DIN Type Tube Fitting

The **BE-LOK** DIN type fitting is a flareless metric fitting that consists of a body, a compression ring (ferrule) and a nut. On assembly, two cutting edges of the compression ring "bite" into the outer surface of the tube ensuring the necessary holding power for high pressure.

Available in three series, the **BE-LOK** DIN type fittings and accessories are manufactured in accordance with DIN2353.

The fittings and components listed in this catalog are intended solely for the assembly of connections for fluid applications.

Design & Construction

The three components of **BE-LOK** DIN Type Tube Fittings are designed and manufactured to produce a strong, reliable, leak-free joint upon proper assembly.

The **BE-LOK** DIN Type Body :

BE-LOK DIN Type fitting bodies are available in over thirty configurations. The shaped products (i. e., elbows, tees, crosses) are forged, then machined to the stringent **BE-LOK** fitting specifications.

The forging process used by " BMT " further improves the strength and mechanical properties of the fitting material. Straight products are made from cold drawn bar stock. The cold drawing operation ensures consistently tight dimensional tolerances, as well as significantly improved strength.

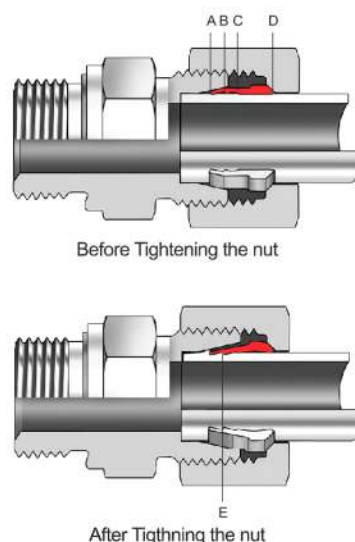
The **BE-LOK** DIN Type compression Ring :

BE-LOK compression rings are precision machined with all dimensions and surfaces, particularly the critical bite edges, monitored on an ongoing basis. The rings are then heat treated in a manner that provides the hardness, strength, and toughness necessary to satisfy the demanding service conditions that exist in industry today.

The **BE-LOK** DIN Type Nut :

BE-LOK fitting nuts are either cold formed, machined from cold drawn material. The cold forming and cold drawing operations provide a more tightly packed grain structure, thus improving the material's strength, in addition, cold forming significantly improves the fatigue properties or endurance limits of the nuts.

Function of DIN Type Tube Fitting



The **BE-LOK** DIN Type fitting produces a low to high pressure, leak free connection of tubes and components in fluid systems. The basic function of the compression Ring is the controlled compression bite of the ring into the tube due to a unique internal geometry.

The front cutting edge (A) has already started cutting into the tube before the second cutting edge (B) starts. As soon as both cutting edges have cut the tube to the designed depth further advance is limited by the stop edge (C).

Owing to the design of both cutting edges and stop edge all forces arising are equally distributed. This distribution along with the specially designed interior collar (D) of the ring guarantees increased safety, particularly with regard to vibration and flexure stresses. The design and function of the compression ring ensure that service vibration loading is not present in the areas of the tubing where the bite is made.

The stop edge causes a sharp increase in tightening forces which is clearly perceptible. After assembly, a visible collar (E) of cut tube material must completely fill the space in front of the first cutting edge. With stainless steel tube and hose connection made from free cutting steel, the collar is less due to the harder material.

During assembly, it is absolutely essential that the tube is held firmly against the stop in the inner cone of the fitting; if not, the cutting process will not take place satisfactorily. Reassembly can be performed an unlimited number of times

Standard Material Specifications Pressure Reductions

Material specification

Fitting Materials	Carbon Steel	Materials according to DIN 3859
	Brass	Materials according to DIN 17660 / DIN 17672
	Stainless Steel	Materials according to DIN 17440 (Material No. : 1.4571 & 1.4401)

Recommend pressure reduction (determined by the fluid medium) for higher service temperature

Material of Fittings	Temperature Rating	Reduction of Pressure
316 Stainless steel	- 60°C up to + 20°C	-
	+ 50°C	4%
	+ 100°C	11%
	+ 200°C	20%
	+ 300°C	29%
	+ 400°C	33%
Carbon Steel	- 40°C up to + 120°C	-
Brass	- 60°C up to + 175°C	30%

Pressure & Temperature Load Capacity Working Pressure

Series	Pressure Ratings			
	Steel (DIN3859)		SS316 (DIN 17440)	
	Size	Pressure (bar)	Size	Pressure (bar)
LL (Very light)	4 - 8	100	4 - 8	100
	6 - 18	315	6 - 15	250
L (Light)	-	-	18 - 22	160
	22 - 42	160	28 - 42	100
S (Heavy)	6 - 14	630	6 - 14	630
	16 - 30	400	16 - 25	400
	38	315	30 - 38	315

*Working Pressure- The Nominal Pressure (PN) as referred to in DIN2401, part 1 draft

* For different material of tubes and fitting.

The tubes must be tested separately concerning the allowed temperature range and the necessary reduction of pressure.

Gaskets

The gaskets used on valves and fittings are normally manufactured in NBR. All have a working temperature of -35° to +135° C with a hardness of 85 ± 5 shores. For higher temperatures Viton seals are suggested with working temperatures between -25° to 200° C with a hardness of 80 ± 5 shores. All the items that are assembled with gaskets or seals of any kind must be handled according to the Din 7716 norm. (requisites for the stocking of rubber product)

Seal on thread ends

To obtain the maximum performance, the taper male thread is to be matched with the taper female thread. The cylindrical male thread is to be matched with the cylindrical female thread. It is possible to match a taper male thread with a cylindrical female thread, but this combination is technically valid only in pipings where medium / low performances are required and is never to be used where high pressures are applied.

In case of matching of a cylindrical thread with relatively soft material, it is advisable to use plain gasket type of seal.

Permissible operating temperature range for fitting materials

Material of Fittings	Temperature Ratings
316 Stainless steel	- 60°C up to + 400°C (DIN17440)
Carbon Steel	- 40°C up to + 120°C (DIN 3859)
Brass	- 60°C up to + 175°C

*The specification in the pressure reductions section are to be observed here.

For Sealing Materials

Seal Material	Temperature Ratings
NBR	- 35°C up to + 100°C
FPM	- 25°C up to + 200°C
PTFE	- 60°C up to + 240°C

*ED- Ring & O- Ring of NBR Standard

CAUTION

When combining the different fitting and sealing materials the lowest temperature limits in each case is applicable

Tubing guide

Allowed Carbon Steel Tubes on All Series

- For steel tubes in mild carbon steel we advise to use calibrated seamless cold drawn without welding tubes ST 37.4 as per DIN 1630.
- Maximum allowed hardness on the outside diameter of the tube is 75 HRB.
- The indicated pressure are to be intended at a constant pressure rate and with temperatures between -20° and +120°.

Tube O.D (mm)	Tolerance (mm)	Wall Thickness (mm)	Tube I.D (mm)	Design Pressure (bar)		Weight (kg/m)
				DIN2413 I Static	DIN2413 III Dynamic	
				4	0.1	
5	0.1	1.0	3	432	416	0.099
6	0.1	* 0.75 1.0	4.5 4	333 389	289 372	0.103 0.123
		1.5	3	549	526	0.166
		2.0	2	692	662	0.197
		2.25	5	757	725	0.208
8	0.1	1.0	6	333	288	0.173
		1.5	5	431	412	0.240
		2.0	4	549	526	0.296
10	0.1	2.5	3	658	630	0.339
		1.0	8	235	209	0.271
		1.5	7	373	357	0.314
12	0.08	2.0	6	478	458	0.395
		2.5	5	576	551	0.462
		3.0	4	666	638	0.518
		1.0	10	235	209	0.271
		1.5	9	353	303	0.389
14	0.08	2.0	8	409	391	0.493
		2.5	7	495	474	0.586
		3.0	6	576	551	0.606
		3.5	5	651	624	0.734
		* 1	12	201	182	0.321
		1.5	11	302	625	0.462
		2.0	10	403	343	0.592
15	0.08	2.5	9	434	417	0.709
		3.0	8	507	487	0.814
		3.5	7	576	553	0.906
		4	6	576	553	0.986
		* 1.0	13	188	171	0.345
16	0.08	1.5	12	282	248	0.499
		2.0	11	336	321	0.641
		2.5	10	409	391	0.771
		3.0	9	478	458	0.888
18	0.08	* 1.0	14	176	160	0.370
		1.5	13	264	234	0.536
		2.0	12	353	303	0.691
		2.5	11	386	370	0.832
		3.0	10	452	433	0.962
18	0.08	* 1.0	16	157	143	0.419
		1.5	15	235	209	0.610
		2.0	14	313	273	0.789
		2.5	13	348	333	0.956
		3.0	12	409	391	1.110

Tube O.D (mm)	Tolerance (mm)	Wall Thickness (mm)	Tube I.D (mm)	Design Pressure (bar)		Weight (kg/m)		
				DIN2413 I Static	DIN2413 III Dynamic			
				20	0.08		* 1.5 2.0 2.5 3.0 3.5	17 16 15 14 13
4.0	12	478	458			1.578		
22	0.08	1.5	19			192	174	0.758
		2.0	18			256	227	0.986
		2.5	17			320	278	1.202
25	0.08	3.0	16	343	328	1.406		
		2.0	21	226	201	1.134		
		2.5	20	282	248	1.387		
		3.0	19	338	292	1.628		
		4.0	17	394	378	2.072		
28	0.08	4.5	16	437	418	2.275		
		5.0	15	478	458	2.466		
		1.5	25	151	139	0.980		
		2.0	24	201	181	1.282		
		2.5	23	252	223	1.572		
30	0.08	3.0	22	302	264	1.850		
		4.0	20	357	342	2.368		
		5.0	18	434	415	2.836		
		* 2.0	26	188	171	1.381		
		2.5	25	235	210	1.695		
35	0.15	3.0	24	282	248	2.000		
		4.0	22	336	321	2.570		
		5.0	20	409	391	3.080		
		2.0	31	161	147	1.630		
		2.5	30	201	181	2.000		
38	0.15	3.0	29	242	215	2.370		
		4.0	27	322	280	3.060		
		5.0	25	357	342	3.690		
		6.0	23	419	401	4.290		
		* 2.5	33	186	168	2.189		
42	0.2	3.0	32	223	200	2.589		
		4.0	30	297	260	3.350		
		5.0	28	332	318	4.075		
		6.0	26	390	373	4.740		
		7.0	24	446	427	5.350		
42	0.2	* 2.0	28	134	124	1.973		
		3.0	26	203	181	2.890		
		4.0	34	269	237	3.750		

*Tube which need a support sleeve for assembly in BE-LOK DIN Type Tube Fittings.

Tubing guide

Allowed Carbon Steel Tubes on All Series

- For steel tubes in stainless steel we advise to use calibrated seamless cold drawn without welding tubes 1.4571 as per DIN 17458 or ASTM A269.
- Maximum allowed hardness on the outside diameter of the tube is 85 HRB.
- The indicated pressure are to be intended a constant pressure rate and with temperatures between -60° and +200°.

Tube O.D (mm)	Tolerance (mm)	Wall Thickness (t mm)	Weight	Design Pressure
			(Kg/m)	DIN 2413-1 (bar)
4	±0.1	0.5	0.048	326
		1.0	0.076	544
6	±0.1	1.0	0.125	406
		1.5	0.169	572
		2.0	0.200	721
8	±0.1	1.0	0.225	347
		1.5	0.244	449
		2.0	0.301	572
		2.5	0.344	686
10	±0.1	1.0	0.225	294
		1.5	0.319	389
		2.0	0.401	498
		2.5	0.469	601
		3.0	0.526	694
12	±0.08	* 1.0	0.275	245
		1.5	0.394	368
		2.0	0.500	426
		2.5	0.595	516
		3.0	0.676	601
		3.5	0.745	679
14	±0.08	1.5	0.469	315
		2.0	0.601	420
		2.5	0.720	452
		3.0	0.826	529
		3.5	0.920	601
15	±0.08	1.5	0.507	294
		2.0	0.651	392
		3.0	0.902	498
16	±0.08	* 1.5	0.544	275
		2.0	0.702	368
		2.5	0.845	402
		3.0	0.977	471
18	±0.08	* 1.5	0.619	245

Tube O.D (mm)	Tolerance (mm)	Wall Thickness (t mm)	Weight	Design Pressure
			(Kg/m)	DIN 2413-1 (bar)
18	±0.08	2.0	0.801	326
		2.5	0.971	409
		3.0	1.128	426
20	±0.08	** 2.0	0.902	294
		2.5	1.095	368
		3.0	1.277	389
		3.5	1.446	444
		4.0	1.602	498
22	±0.08	* 2.0	1.001	267
		2.5	1.220	334
		3.0	1.427	401
25	±0.08	* 2.0	1.151	236
		2.5	1.408	294
		3.0	1.653	352
		4.0	2.104	411
28	±0.08	4.5	2.310	456
		* 2.0	1.301	210
		2.5	1.596	263
30	±0.08	3.0	1.878	315
		* 2.0	1.402	175
		2.5	1.721	245
35	±0.15	3.0	2.028	294
		4.0	2.604	392
		* 2.0	2.222	168
		2.5	2.034	210
38	±0.15	3.0	2.403	252
		4.0	3.104	336
		* 3.0	2.628	232
42	±0.2	4.0	3.405	310
		5.0	4.131	387
		3.0	2.929	210
		4.0	3.806	280

*Tube which need a support sleeve for assembly in BE-LOK DIN Type Tube Fittings.

**Tubes to be used for ISO 8434-2 / SAE J514 norm only.

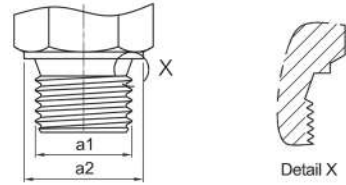
Stud Ends & Tapered Hold Forms for Tube Fittings

Form of Stud Ends

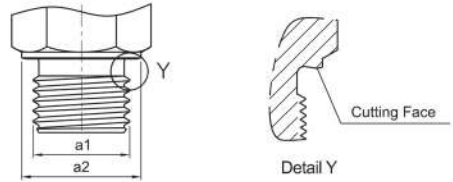
Thread size for Form A, B, E, F Stud Ends			
a1	a2	a3 ± 0.2	a4 ± 0.1
M8 x 1.0	-	-	10.9
M10 x 1.0	14.0	13.9	12.9
M12 x 1.5	17.0	16.9	16.9
M14 x 1.5	19.0	18.9	18.9
M16 x 1.5	21.0	21.9	20.9
M18 x 1.5	23.0	23.9	22.9
M20 x 1.5	25.0	25.9	24.9
M22 x 1.5	27.0	26.9	26.9
M26 x 1.5	31.0	31.9	30.9
M27 x 2.0	32.0	31.9	31.9
M33 x 2.0	39.0	39.9	37.9
M42 x 2.0	49.0	49.9	47.9
M48 x 2.0	55.0	54.9	54.9
G 1/8	14.0	13.9	-
G 1/4	18.0	18.9	-
G 3/8	22.0	21.9	-
G 1/2	26.0	26.9	-
G 3/4	32.0	31.9	-
G 1	39.0	39.9	-
G 1 1/4	49.0	49.9	-
G 1 1/2	55.0	54.9	-
7/16-20UNF	-	-	14.4
9/16-18UNF	-	-	17.6
3/4-16UNF	-	-	22.3
7/8-14UNF	-	-	25.5
1 1/16-12UN	-	-	31.9
1 5/16-12UN	-	-	38.2
1 5/8-12UN	-	-	47.4

Thread Size for Form C Stud Ends		
M8 x 1.0 keg.	1/8 NPT	R 1/8 keg.
M10 x 1.0 keg.	1/4 NPT	R 1/4 keg.
M12 x 1.5 keg.	3/8 NPT	R 3/8 keg.
M14 x 1.5 keg.	1/2 NPT	R 1/2 keg.
M16 x 1.5 keg.	3/4 NPT	R 3/4 keg.
M18 x 1.5 keg.	1 NPT	R 1 keg.
M20 x 1.5 keg.	1 1/4 NPT	R 1 1/4 keg.
M22 x 1.5 keg.	1 1/2 NPT	R 1 1/2 keg.

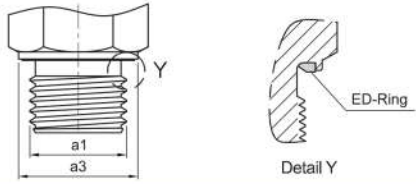
Form A (DIN3852 Part 1&2) with sealing by washer



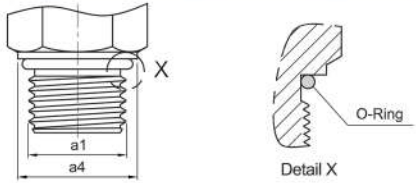
Form B (DIN 3852 Part 1&2) with sealing by compression against face of body



Form E (DIN 3852 Part 11) with sealing by DIN 3869 ring seals (*ED-Ring)

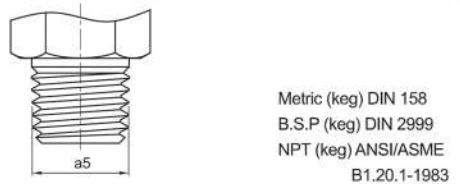


Form F (DIN 3852 Part 3) with sealing by *O-ring



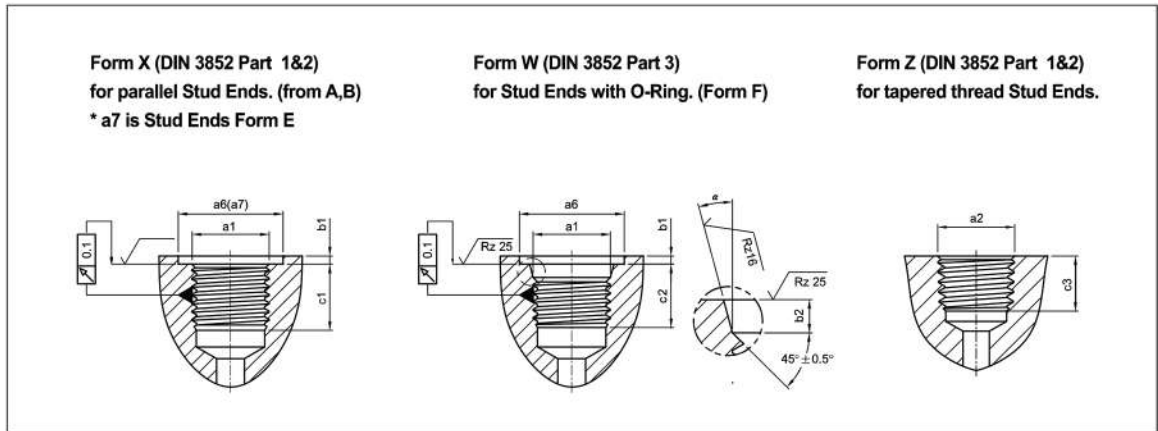
* ED-Ring & O-Ring Seals made of NBR Standard (-20°C to 100°C)
Other Sealing Materials are available on Request.

Form C (DIN 3852 Part 1&2) with sealing in tapered thread



Stud Ends & Tapered Hold Forms for Tube Fittings

Form of Tapped Holes



Thread Size for		a6 min.	a7	b1 max.	a2 ^{+0.4}	C1 min.	C1 min.	C3 min.	a ⁰ ±0.1 ⁰
Form X,W Tapped Holes a1	Form Z Tapped Holes a2								
M8 x 1.0	M8 x 1.0 keg.	13.0	-	1.0	1.6	-	10.0	5.5	12.0
M10 x 1.0	M10 x 1.0 keg.	15.0	15.0	1.0	1.6	8.0	10.0	5.5	12.0
M12 x 1.5	M12 x 1.5 keg.	18.0	18.0	1.5	2.4	12.0	11.5	8.5	12.0
M14 x 1.5	M14 x 1.5 keg.	20.0	20.0	1.5	2.4	12.0	11.5	8.5	15.0
M16 x 1.5	M16 x 1.5 keg.	22.0	23.0	1.5	2.4	12.0	13.0	8.5	15.0
M18 x 1.5	M18 x 1.5 keg.	24.0	25.0	2.0	2.4	12.0	14.5	8.5	15.0
M20 x 1.5	M20 x 1.5 keg.	26.0	27.0	2.0	2.4	14.0	15.0	10.5	15.0
M22 x 1.5	M22 x 1.5 keg.	28.0	28.0	2.5	2.4	14.0	15.5	10.5	15.0
M26 x 1.5	-	32.0	33.0	2.5	3.1	16.0	16.0	-	15.0
M27 x 2.0	-	33.0	33.0	2.5	3.1	16.0	19.0	-	15.0
M33 x 2.0	-	40.0	41.0	2.5	3.1	18.0	19.0	-	15.0
M42 x 2.0	-	50.0	51.0	2.5	3.1	20.0	19.5	-	15.0
M48 x 2.0	-	56.0	56.0	2.5	3.1	22.0	22.0	-	15.0
G 1/8	1/8 NPT	15.0	15.0	1.0	-	8.0	-	6.9	-
G 1/4	1/4 NPT	19.0	20.0	1.5	-	12.0	-	10.0	-
G 3/8	3/8 NPT	23.0	23.0	2.0	-	12.0	-	10.3	-
G 1/2	1/2 NPT	27.0	28.0	2.5	-	14.0	-	13.6	-
G 3/4	3/4 NPT	33.0	33.0	2.5	-	16.0	-	14.1	-
G 1	1 NPT	40.0	41.0	2.5	-	18.0	-	16.8	-
G 1 1/4	1 1/4 NPT	50.0	51.0	2.5	-	20.0	-	17.3	-
G 1 1/2	1 1/2 NPT	56.0	56.0	2.5	-	22.0	-	17.3	-
7/16-20UNF	R 1/8 keg.	21.0	-	1.6	2.4	-	11.5	5.5	12.0
9/16-18UNF	R 1/4 keg.	25.0	-	1.6	2.5	-	12.7	8.5	12.0
3/4-16UNF	R 3/8 keg.	30.0	-	2.4	2.5	-	14.3	8.5	15.0
7/8-14UNF	R 1/2 keg.	34.0	-	2.4	2.5	-	16.7	10.5	15.0
1 1/16-12UN	R 3/4 keg.	41.0	-	2.4	3.3	-	19.0	13.0	15.0
1 5/16-12UN	R 1 keg.	49.0	-	3.2	3.3	-	19.0	16.0	15.0
1 5/8-12UN	R 1 1/4 keg.	58.0	-	3.2	3.3	-	19.0	17.0	15.0
	R 1 1/2 keg.	-	-	-	-	-	-	17.0	-

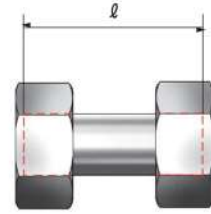
Assembly in Fitting Body

The use of pre-assembly bodies or pre-assembly tools are strongly recommended for all assemblies. Stainless steel tube and fittings as well as standpipe hose ends must be pre-assembled in a pre-assembly tool.

A) Preparing the tube

1 Maximum height H for straight tube end

Minimum length L for short piece of tube



The portion of straight tube H must not deviate from roundness and straightness to the extent that the tube tolerances in DIN 2391 are exceeded.

Series tube o.d	LL				L								S											
	4	5	6	8	6	8	10	12	15	18	22	28	35	42	6	8	10	12	14	16	20	25	30	38
H min	24	25	25	26	31	31	33	33	36	38	41	41	48	48	35	35	37	37	43	43	50	54	58	65
ℓ min	30	32	32	33	39	39	42	42	45	48	53	53	60	60	44	44	47	47	54	54	63	68	73	82

2



Saw off tube square
1/2° angle tolerance to the tube axis.

3

Attention : Do not use tube cutter!



a) tube cut with
tube cutter :
heavy burr / bevel cut



b) sawed off tube:
very little burr



4



Lightly deburr inside and outside edge.
Level up 0.3mm x 45° (0.012" x 45°)
permissible.

B) Preparing fittings parts with lubricants

5



Lubricate thread and cone of fitting body, also compression ring and thread of nut.

Assembly in Fitting Body

C) Components

6



Slip nut and compression ring over tube end.

7



Ensure compression ring and nut are facing the right way.

D) Assembly

8



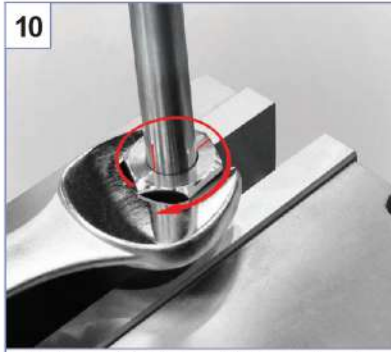
Screw nut manually on to fitting body until fingertight. Hold tube against the shoulder in the cone of fitting body.

9



To measure the prescribed turns of the nut, mark nut and tube.

10



Tighten nut 1-1/2 turns (Tube must not turn with nut). Stop edges limits over tightening by increasing tightening torque.

E) Check

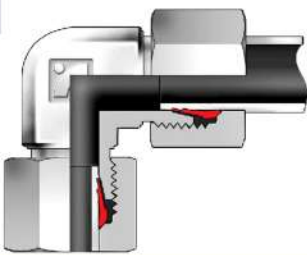
11



Loosen nut. Remove tube from fitting and check if a visible collar fills space in front of 1st cutting edge completely. If not, tighten slightly more. If dose not matter if ring can be roated on tube end.

F) Final assembly

12



Final assembly of all pre-assembled fittings (DSE, DSBT, DSRT, DSRA) made in the appropriate body (well lubricated) with at least 1/4 turn of the nut beyond the point of a clearly perceptible resistance.

G) Repeated assembly

13



On remaking joints, nut to be tightened without increased effort. Fitting body to be held tight.

* After dismantling the tube ends for inspection they should be refitted into the same inner cone of the fitting body in which assembly was carried out.

WARNING

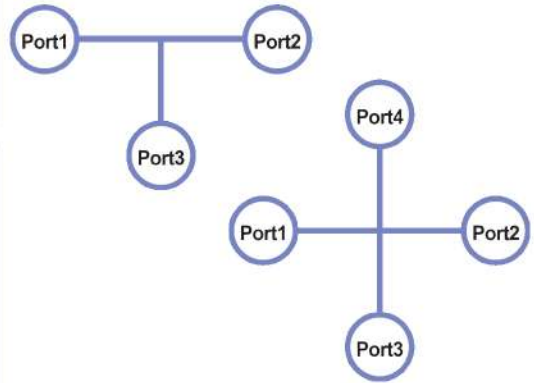
We warn against using sealing heads, form A, DIN 3868.

We recommend the use of swivel nuts, from B in conformance with DIN 3865.

Ordering Information

Example 1	Male Connector								
D	CM	-	10	L	-	02G	ED	-	SS
1	2		3	4		5	6		7

In tees and crosses shown below port2 is referred to as run and port3, port4 is referred to as branch



Example 2	Reducing Union Tee											
D	RUT	-	10	L	-	10	L	-	08	L	-	B
1	2		3	4		3	4		3	4		7
			*Port1			*Port2			*Port3			

1. BE-LOK Bite Type Tube Fitting
2. Name of Fitting : Refer to index
3. Tube O.D

Tube O.D	4mm	6mm	8mm	10mm	12mm	15mm	16mm	18mm	20mm	22mm	25mm	28mm	30mm	35mm	38mm	42mm
Identify	4	6	8	10	12	15	16	18	20	22	25	28	30	35	38	42

4. Series

Series	Very Light	Light	Heavy
Identify	LL	L	S

5. Thread Size : See Thread Specification
6. Elastomer : ED-Ring & O-Ring seal (Refer to Seal Material)
7. Fitting Material

Carbon Steel (DIN3859)	316 Stainless Steel (DIN17440/1.4571)	Brass
C	SS	B

Thread Specifications

Pipe Thread

Thread Type	Thread Size									Specification
	1/8"	1/4"	3/8"	1/2"	3/4"	1"	1 1/4"	1 1/2"	2"	
NPT	01N	02N	03N	04N	06N	08N	10N	12N	16N	ANSI/ASME B1.20.1
ISO/BSP Parallel	01G	02G	03G	04G	06G	08G	10G	12G	16G	ISO228 (DIN259)
ISO/BSP Tapered	01R	02R	03R	04R	06R	08R	10R	12R	16R	DIN - 2999

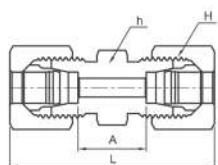
Metric Thread

Thread Type	Thread Size									Specification
	M8 x 1.0	M10 x 1.0	M12 x 1.5	M14 x 1.5	M16 x 1.5	M18 x 1.5	M42 x 2.0	M48 x 2.0	
Metric Parallel	M8	M10	M12	M14	M16	M18	M42	M48	DIN - 13
Metric Tapered(Keg)	M8K	M10K	M12K	M14K	M16K	M18K	M42K	M48K	DIN - 158

Unified Thread

Specification	Thread Size						
	7/16-20UNF	8/16-18UNF	3/4-16UNF	7/8-14UNF	1 1/16-12UN	1 5/16-12UN	1 5/8-12UN
ASME B1.1	4U	6U	8U	10U	12U	16U	20U

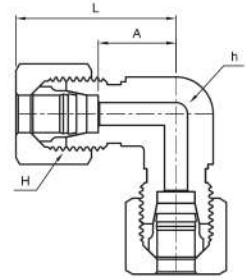
DUS Union



Series	Part Number	Tube O.D	Dimension			
			H	h	L	A
LL Very Light PN 100	BLK-DUS-04LL	4	10.0	9.0	31.0	12.0
	BLK-DUS-06LL	6	12.0	11.0	32.0	9.0
	BLK-DUS-08LL	8	14.0	12.0	35.0	12.0
	BLK-DUS-10LL	10	17.0	14.0	35.0	12.0
	BLK-DUS-12LL	12	19.0	17.0	35.0	11.0
L Light PN 315	BLK-DUS-06L	6	14.0	12.0	39.0	10.0
	BLK-DUS-08L	8	17.0	14.0	40.0	11.0
	BLK-DUS-10L	10	19.0	17.0	42.0	13.0
	BLK-DUS-12L	12	22.0	19.0	43.0	14.0
	BLK-DUS-15L	15	27.0	24.0	46.0	16.0
	BLK-DUS-18L	18	32.0	27.0	48.0	16.0
PN 160	BLK-DUS-22L	22	36.0	32.0	52.0	20.0
	BLK-DUS-28L	28	41.0	41.0	54.0	21.0
	BLK-DUS-35L	35	50.0	46.0	63.0	20.0
	BLK-DUS-42L	42	60.0	55.0	66.0	21.0
S Heavy PN 630	BLK-DUS-06S	6	17.0	14.0	45.0	16.0
	BLK-DUS-08S	8	19.0	17.0	47.0	18.0
	BLK-DUS-10S	10	22.0	19.0	49.0	17.0
	BLK-DUS-12S	12	24.0	22.0	51.0	19.0
	BLK-DUS-14S	14	27.0	24.0	57.0	22.0
PN 400	BLK-DUS-16S	16	30.0	27.0	57.0	21.0
	BLK-DUS-20S	20	36.0	32.0	66.0	23.0
	BLK-DUS-25S	25	46.0	41.0	74.0	26.0
	BLK-DUS-30S	30	50.0	46.0	80.0	27.0
PN 315	BLK-DUS-38S	38	60.0	55.0	90.0	29.0

DUE Union Elbow

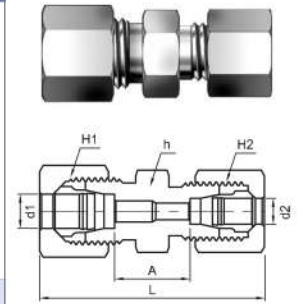
Series	Part Number	Tube O.D	Dimension			
			H	h	L	A
LL Very Light PN 100	BLK-DUE-04LL	4	10.0	9.0	21.0	11.0
	BLK-DUE-06LL	6	12.0	9.0	21.0	9.5
	BLK-DUE-08LL	8	14.0	12.0	23.0	11.5
	BLK-DUE-10LL	10	17.0	14.0	24.0	12.5
	BLK-DUE-12LL	12	19.0	17.0	25.0	13.0
L Light PN 315	BLK-DUE-06L	6	14.0	12.0	27.0	12.0
	BLK-DUE-08L	8	17.0	12.0	29.0	14.0
	BLK-DUE-10L	10	19.0	14.0	30.0	15.0
	BLK-DUE-12L	12	22.0	17.0	32.0	17.0
	BLK-DUE-15L	15	27.0	19.0	36.0	21.0
	BLK-DUE-18L	18	32.0	24.0	40.0	23.5
PN 160	BLK-DUE-22L	22	36.0	27.0	44.0	27.5
	BLK-DUE-28L	28	41.0	36.0	47.0	30.5
	BLK-DUE-35L	35	50.0	41.0	56.0	34.5
	BLK-DUE-42L	42	60.0	50.0	63.0	40.0
S Heavy PN 630	BLK-DUE-06S	6	17.0	12.0	31.0	16.0
	BLK-DUE-08S	8	19.0	14.0	32.0	17.0
	BLK-DUE-10S	10	22.0	17.0	34.0	17.5
	BLK-DUE-12S	12	24.0	17.0	38.0	21.5
	BLK-DUE-14S	14	27.0	19.0	40.0	22.0
PN 400	BLK-DUE-16S	16	30.0	24.0	43.0	24.5
	BLK-DUE-20S	20	36.0	27.0	48.0	26.5
	BLK-DUE-25S	25	46.0	36.0	54.0	30.0
	BLK-DUE-30S	30	50.0	41.0	62.0	35.5
PN 315	BLK-DUE-38S	38	60.0	50.0	72.0	41.0



- All dimensions in millimeters unless specified as "inch". Dimension are for reference only, subject to change
- Dimensions given approximate length with tightened nut.

DRU Reducing Union

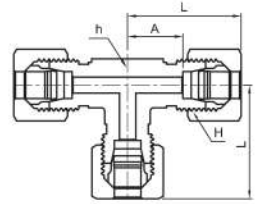
Series	Part Number	Tube O.D		Dimension				
		d1	d2	H1	H2	h	L	A
L Light PN 315	BLK-DRU-08L-06L	8	6	17.0	14.0	14.0	40.0	11.0
	BLK-DRU-10L-06L	10	6	19.0	14.0	17.0	41.0	12.0
	BLK-DRU-10L-08L	10	8	19.0	17.0	17.0	41.0	12.0
	BLK-DRU-12L-06L	12	6	22.0	14.0	19.0	42.0	13.0
	BLK-DRU-12L-08L	12	8	22.0	17.0	19.0	42.0	13.0
	BLK-DRU-12L-10L	12	10	22.0	19.0	19.0	43.0	14.0
	BLK-DRU-15L-10L	15	10	27.0	19.0	24.0	45.0	15.0
	BLK-DRU-15L-12L	15	12	27.0	22.0	24.0	45.0	15.0
	BLK-DRU-18L-10L	18	10	32.0	19.0	27.0	46.0	15.5
	BLK-DRU-18L-12L	18	12	32.0	22.0	27.0	46.0	15.5
	BLK-DRU-18L-15L	18	15	32.0	27.0	27.0	48.0	16.5
PN 160	BLK-DRU-22L-12L	22	12	36.0	22.0	32.0	48.0	17.5
	BLK-DRU-22L-15L	22	15	36.0	27.0	32.0	50.0	18.5
	BLK-DRU-22L-18L	22	18	36.0	32.0	32.0	50.0	18.0
	BLK-DRU-28L-18L	28	18	41.0	32.0	41.0	52.0	19.0
	BLK-DRU-28L-22L	28	22	41.0	36.0	41.0	54.0	21.0
	BLK-DRU-35L-22L	35	22	50.0	36.0	46.0	59.0	21.0
	BLK-DRU-35L-28L	35	28	50.0	41.0	46.0	59.0	21.0
S Heavy PN 630	BLK-DRU-08S-06S	8	6	19.0	17.0	17.0	47.0	18.0
	BLK-DRU-10S-06S	10	6	22.0	17.0	19.0	48.0	17.5
	BLK-DRU-10S-08S	10	8	22.0	19.0	19.0	48.0	17.5
	BLK-DRU-12S-06S	12	6	24.0	17.0	22.0	50.0	19.5
	BLK-DRU-12S-08S	12	8	24.0	19.0	22.0	50.0	19.5
	BLK-DRU-12S-10S	12	10	24.0	22.0	22.0	51.0	19.0
	BLK-DRU-14S-10S	14	10	27.0	22.0	24.0	54.0	20.5
	BLK-DRU-14S-12S	14	12	27.0	24.0	24.0	54.0	20.5
PN 400	BLK-DRU-16S-12S	16	12	30.0	24.0	27.0	54.0	20.0
	BLK-DRU-16S-14S	16	14	30.0	27.0	27.0	57.0	21.5
	BLK-DRU-20S-10S	20	10	36.0	22.0	32.0	60.0	22.0
	BLK-DRU-20S-12S	20	12	36.0	24.0	32.0	60.0	22.0
	BLK-DRU-24S-16S	20	16	36.0	30.0	32.0	63.0	23.0
	BLK-DRU-25S-26S	25	16	46.0	30.0	41.0	68.0	25.0
	BLK-DRU-25S-20S	25	20	46.0	36.0	41.0	71.0	25.5
	BLK-DRU-30S-20S	30	20	50.0	36.0	46.0	74.0	26.0
	BLK-DRU-30S-25S	30	25	50.0	46.0	46.0	77.0	26.5
PN 315	BLK-DRU-38S-30S	38	30	60.0	50.0	55.0	87.0	29.5



- All dimensions in millimeters unless specified as "inch". Dimension are for reference only, subject to change
- Dimensions given approximate length with tightened nut.

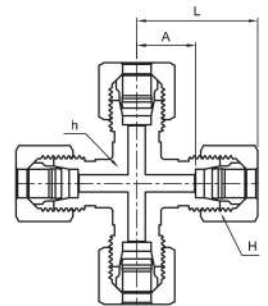
DUT Union Tee

Series	Part Number	Tube O.D	Dimension			
			H1	h	L	A
LL Very Light PN 100	BLK-DUT-04LL	4	10.0	9.0	21.0	11.0
	BLK-DUT-06LL	6	12.0	9.0	21.0	9.5
	BLK-DUT-08LL	8	14.0	12.0	23.0	11.5
	BLK-DUT-10LL	10	17.0	14.0	24.0	12.5
	BLK-DUT-12LL	12	19.0	14.0	27.0	15.0
L Light PN 315	BLK-DUT-06L	6	14.0	12.0	27.0	12.0
	BLK-DUT-08L	8	17.0	12.0	29.0	14.0
	BLK-DUT-10L	10	19.0	14.0	30.0	15.0
	BLK-DUT-12L	12	22.0	17.0	32.0	17.0
	BLK-DUT-15L	15	27.0	19.0	36.0	21.0
PN 160	BLK-DUT-18L	18	32.0	24.0	40.0	23.5
	BLK-DUT-22L	22	36.0	27.0	44.0	27.5
	BLK-DUT-28L	28	41.0	36.0	47.0	30.5
	BLK-DUT-35L	35	50.0	41.0	56.0	34.5
S Heavy PN 630	BLK-DUT-42L	42	60.0	50.0	63.0	40.0
	BLK-DUT-06S	6	17.0	12.0	31.0	16.0
	BLK-DUT-08S	8	19.0	14.0	32.0	17.0
	BLK-DUT-10S	10	22.0	17.0	34.0	17.5
PN 400	BLK-DUT-12S	12	24.0	17.0	38.0	21.5
	BLK-DUT-14S	14	27.0	19.0	40.0	22.0
	BLK-DUT-16S	16	30.0	24.0	43.0	24.5
	BLK-DUT-20S	20	36.0	27.0	48.0	26.5
PN 315	BLK-DUT-25S	25	46.0	36.0	54.0	30.0
	BLK-DUT-30S	30	50.0	41.0	62.0	35.5
	BLK-DUT-38S	38	60.0	50.0	72.0	41.0



DUC Union Tee

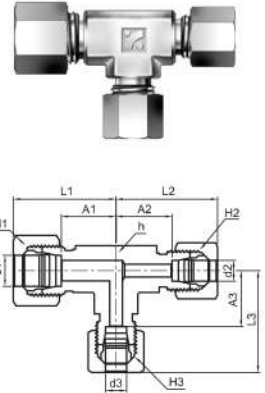
Series	Part Number	Tube O.D	Dimension			
			H1	h	L	A
LL Very Light PN 100	BLK-DUC-04LL	4	10.0	9.0	21.0	11.0
	BLK-DUC-06LL	6	12.0	9.0	21.0	9.5
	BLK-DUC-08LL	8	14.0	12.0	23.0	11.5
	BLK-DUC-10LL	10	17.0	14.0	24.0	12.5
	BLK-DUC-12LL	12	19.0	14.0	27.0	15.0
L Light PN 315	BLK-DUC-06L	6	14.0	12.0	27.0	12.0
	BLK-DUC-08L	8	17.0	12.0	29.0	14.0
	BLK-DUC-10L	10	19.0	14.0	30.0	15.0
	BLK-DUC-12L	12	22.0	17.0	32.0	17.0
	BLK-DUC-15L	15	27.0	19.0	36.0	21.0
PN 160	BLK-DUC-18L	18	32.0	24.0	40.0	23.5
	BLK-DUC-22L	22	36.0	27.0	44.0	27.5
	BLK-DUC-28L	28	41.0	36.0	47.0	30.5
	BLK-DUC-35L	35	50.0	41.0	56.0	34.5
S Heavy PN 630	BLK-DUC-42L	42	60.0	50.0	63.0	40.0
	BLK-DUC-06S	6	17.0	12.0	31.0	16.0
	BLK-DUC-08S	8	19.0	14.0	32.0	17.0
	BLK-DUC-10S	10	22.0	17.0	34.0	17.5
PN 400	BLK-DUC-12S	12	24.0	17.0	38.0	21.5
	BLK-DUC-14S	14	27.0	19.0	40.0	22.0
	BLK-DUC-16S	16	30.0	24.0	43.0	24.5
	BLK-DUC-20S	20	36.0	27.0	48.0	26.5
PN 315	BLK-DUC-25S	25	46.0	36.0	54.0	30.0
	BLK-DUC-30S	30	50.0	41.0	62.0	35.5
	BLK-DUC-38S	38	60.0	50.0	72.0	41.0



- All dimensions in millimeters unless specified as "inch". Dimension are for reference only, subject to change
- Dimensions given approximate length with tightened nut.

DRUT Reducing Union Tee

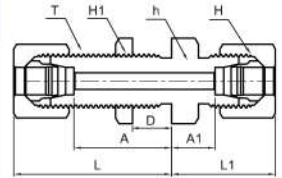
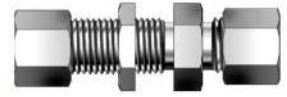
Series	Part Number	Tube O.D			Dimension									
		d1	d2	d3	H1	H2	H3	h	L1	L2	L3	A1	A2	A3
L Light PN 316	BLK-DRUT-06L-06L-08L	6	6	8	14	14	17	14	29	29	29	14.0	14.0	14.0
	BLK-DRUT-08L-08L-06L	8	8	6	17	17	14	14	29	29	29	14.0	14.0	14.0
PN 315	BLK-DRUT-06L-06L-10L	6	6	10	14	14	19	14	30	30	30	15.0	15.0	15.0
	BLK-DRUT-08L-08L-10L	8	8	10	17	17	19	14	30	30	30	15.0	15.0	15.0
	BLK-DRUT-10L-10L-16L	10	10	6	19	19	14	14	30	30	30	15.0	15.0	15.0
	BLK-DRUT-10L-10L-08L	10	10	8	19	19	17	14	30	30	30	15.0	15.0	15.0
PN 315	BLK-DRUT-10L-06L-10L	10	6	10	19	14	19	14	30	30	30	15.0	15.0	15.0
	BLK-DRUT-08L-08L-12L	8	8	12	17	17	22	17	32	32	32	17.0	17.0	17.0
	BLK-DRUT-12L-12L-06L	12	12	6	22	22	14	17	32	32	32	17.0	17.0	17.0
	BLK-DRUT-12L-08L-08L	12	8	8	22	17	17	17	32	32	32	17.0	17.0	17.0
PN 315	BLK-DRUT-12L-12L-08L	12	12	8	22	22	17	17	32	32	32	17.0	17.0	17.0
	BLK-DRUT-12L-10L-10L	12	10	10	22	19	19	17	32	32	32	17.0	17.0	17.0
	BLK-DRUT-12L-12L-10L	12	12	10	22	22	19	17	32	32	32	17.0	17.0	17.0
	BLK-DRUT-12L-10L-12L	12	10	12	22	19	22	17	32	32	32	17.0	17.0	17.0
PN 315	BLK-DRUT-10L-10L-15L	10	10	15	19	19	27	19	36	36	36	21.0	21.0	21.0
	BLK-DRUT-12L-12L-15L	12	12	15	22	22	27	19	36	36	36	21.0	21.0	21.0
	BLK-DRUT-15L-15L-06L	15	15	6	27	27	14	19	36	36	36	21.0	21.0	21.0
	BLK-DRUT-15L-15L-10L	15	15	10	27	27	19	19	36	36	36	21.0	21.0	21.0
	BLK-DRUT-15L-12L-12L	15	12	12	27	22	22	19	36	36	36	21.0	21.0	21.0
	BLK-DRUT-15L-15L-12L	15	15	12	27	27	22	19	36	36	36	21.0	21.0	21.0
PN 315	BLK-DRUT-15L-12L-15L	15	12	15	27	22	27	19	36	36	36	21.0	21.0	21.0
	BLK-DRUT-12L-12L-18L	12	12	18	22	22	32	24	39	39	40	24.0	24.0	23.5
	BLK-DRUT-18L-10L-10L	18	10	10	32	19	19	24	40	39	39	23.5	24.0	24.0
	BLK-DRUT-18L-18L-10L	18	18	10	32	32	19	24	40	40	39	23.5	23.5	24.0
	BLK-DRUT-18L-18L-12L	18	18	12	32	32	22	24	40	40	39	23.5	23.5	24.0
	BLK-DRUT-18L-18L-15L	18	18	15	32	32	27	24	40	40	39	23.5	23.5	24.0
PN 160	BLK-DRUT-18L-10L-18L	18	10	18	32	19	32	27	40	39	40	23.5	24.0	23.5
	BLK-DRUT-22L-22L-10L	22	22	10	36	36	19	27	44	44	43	27.5	27.5	28.0
	BLK-DRUT-22L-22L-12L	22	22	12	36	36	22	27	44	44	43	27.5	27.5	28.0
	BLK-DRUT-22L-15L-15L	22	15	15	36	27	27	27	44	43	43	27.5	28.0	28.0
	BLK-DRUT-22L-22L-15L	22	22	15	36	36	27	27	44	44	43	27.5	27.5	28.0
	BLK-DRUT-22L-18L-18L	22	18	18	36	32	32	27	44	44	44	27.5	27.5	27.5
PN 160	BLK-DRUT-22L-22L-18L	22	22	18	36	36	32	27	44	44	44	27.5	27.5	27.5
	BLK-DRUT-22L-18L-22L	22	18	22	36	32	36	27	44	44	44	27.5	27.5	27.5
	BLK-DRUT-28L-28L-10L	28	28	10	41	41	19	36	47	47	46	30.5	30.5	31.0
	BLK-DRUT-28L-28L-12L	28	28	12	41	41	22	36	47	47	46	30.5	30.5	31.0
	BLK-DRUT-28L-28L-15L	28	28	15	41	41	27	36	47	47	46	30.5	30.5	31.0
	BLK-DRUT-28L-28L-18L	28	28	18	41	41	32	36	47	47	47	30.5	30.5	30.5
S Heavy PN 630	BLK-DRUT-28L-22L-22L	28	22	22	41	36	36	36	47	47	47	30.5	30.5	30.5
	BLK-DRUT-28L-28L-22L	28	28	22	41	41	36	36	47	47	47	30.5	30.5	30.5
	BLK-DRUT-10S-10S-10L	10	10	6	22	22	17	17	34	34	33	17.5	17.5	18.0
PN 400	BLK-DRUT-12S-08S-12L	12	8	8	24	19	19	17	38	37	37	21.5	22.0	22.0
	BLK-DRUT-12S-12S-15L	12	12	8	24	24	19	17	38	38	37	21.5	21.5	22.0
	BLK-DRUT-12S-12S-18L	12	12	10	24	24	22	17	38	38	38	21.5	21.5	21.5
	BLK-DRUT-12S-12S-16S	12	12	16	24	24	30	24	42	42	43	25.5	25.5	24.5
	BLK-DRUT-16S-16S-06S	16	16	6	30	30	17	24	43	43	41	24.5	24.5	26.0
PN 400	BLK-DRUT-16S-16S-08S	16	16	8	30	30	19	24	43	43	41	24.5	24.5	26.0
	BLK-DRUT-16S-16S-10S	16	16	10	30	30	22	24	43	43	42	24.5	24.5	25.5
	BLK-DRUT-16S-16S-12S	16	16	12	30	30	24	24	43	43	42	24.5	24.5	25.5
PN 400	BLK-DRUT-16S-16S-20S	16	16	20	30	30	36	27	47	47	48	28.5	28.5	26.5
	BLK-DRUT-20S-20S-10S	20	20	10	36	36	22	27	48	48	46	26.5	26.5	29.5
	BLK-DRUT-20S-20S-12S	20	20	12	36	36	24	27	48	48	46	26.5	26.5	29.5
PN 400	BLK-DRUT-20S-20S-16S	20	20	16	36	36	30	27	48	48	47	26.5	26.5	28.5
	BLK-DRUT-16S-16S-20S	20	20	25	36	36	46	36	53	53	54	31.5	31.5	30.0
	BLK-DRUT-20S-20S-10S	25	25	16	46	46	30	36	54	54	52	30.0	30.0	33.5
PN 400	BLK-DRUT-20S-20S-12S	25	25	20	46	46	36	36	54	54	53	30.0	30.0	31.5
	BLK-DRUT-20S-20S-16S	25	25	30	46	46	50	41	61	61	62	37.0	37.0	35.5



- All dimensions in millimeters unless specified as "inch". Dimension are for reference only, subject to change
- Dimensions given approximate length with tightened nut.

DBHU Bulkhead Union

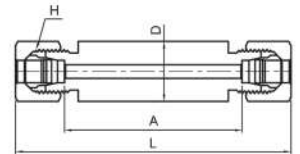
Series	Part Number	Tube O.D	Dimension							
			H	H1	h	L	L1	A	A1	T
L Light PN 315	BLK-DBHU-06L	6	14.0	17.0	17.0	42.0	22.0	27.0	7.0	M12 x 1.5
	BLK-DBHU-08L	8	17.0	19.0	19.0	42.0	23.0	27.0	8.0	M14 x 1.5
	BLK-DBHU-10L	10	19.0	22.0	22.0	43.0	25.0	28.0	10.0	M16 x 1.5
	BLK-DBHU-12L	12	22.0	24.0	24.0	44.0	25.0	29.0	10.0	M18 x 1.5
	BLK-DBHU-15L	15	27.0	30.0	27.0	46.0	27.0	31.0	12.0	M22 x 1.5
	BLK-DBHU-18L	18	32.0	36.0	32.0	49.0	30.0	32.5	13.5	M26 x 1.5
PN 160	BLK-DBHU-22L	22	36.0	41.0	36.0	51.0	33.0	34.5	16.5	M30 x 2.0
	BLK-DBHU-28L	28	41.0	46.0	41.0	52.0	35.0	35.5	18.5	M36 x 2.0
	BLK-DBHU-35L	35	50.0	55.0	50.0	58.0	40.0	36.5	18.5	M45 x 2.0
	BLK-DBHU-42L	42	60.0	65.0	60.0	59.0	42.0	36.0	19.0	M52 x 2.0
S Heavy PN 630	BLK-DBHU-06S	6	17.0	19.0	19.0	44.0	27.0	29.0	12.0	M14 x 1.5
	BLK-DBHU-08S	8	19.0	22.0	22.0	44.0	28.0	29.0	13.0	M16 x 1.5
	BLK-DBHU-10S	10	22.0	24.0	24.0	46.0	31.0	29.5	14.5	M18 x 1.5
	BLK-DBHU-12S	12	24.0	27.0	27.0	47.0	31.0	30.5	14.5	M20 x 1.5
	BLK-DBHU-14S	14	27.0	30.0	30.0	50.0	35.0	32.0	17.0	M22 x 1.5
PN 400	BLK-DBHU-16S	16	30.0	32.0	32.0	50.0	35.0	31.5	16.5	M24 x 1.5
	BLK-DBHU-20S	20	36.0	41.0	41.0	55.0	39.0	33.5	17.5	M30 x 2.0
	BLK-DBHU-25S	25	46.0	46.0	46.0	59.0	44.0	35.0	20.0	M36 x 2.0
	BLK-DBHU-30S	30	50.0	50.0	50.0	64.0	48.0	37.5	21.5	M42 x 2.0
PN 315	BLK-DBHU-38S	38	60.0	65.0	65.0	68.0	53.0	37.0	22.0	M52 x 2.0



D=16mm Max Bulkhead thickness

DBUW Weld Bulkhead Union

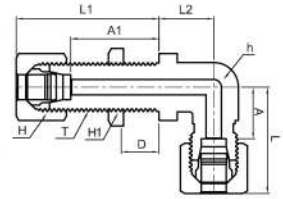
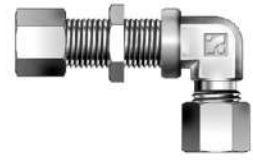
Series	Part Number	Tube O.D	Dimension			
			H	D	L	A
L Light PN 315	BLK-DBUW-06L	6	14.0	18.0	85.0	56.0
	BLK-DBUW-08L	8	17.0	20.0	85.0	56.0
	BLK-DBUW-10L	10	19.0	22.0	87.0	58.0
	BLK-DBUW-12L	12	22.0	25.0	87.0	58.0
	BLK-DBUW-15L	15	27.0	28.0	100.0	70.0
	BLK-DBUW-18L	18	32.0	32.0	101.0	69.0
PN 315	BLK-DBUW-22L	22	36.0	36.0	105.0	73.0
	BLK-DBUW-28L	28	41.0	40.0	106.0	73.0
	BLK-DBUW-35L	35	50.0	50.0	114.0	71.0
	BLK-DBUW-42L	42	60.0	60.0	115.0	70.0
S Heavy PN 630	BLK-DBUW-06S	6	17.0	20.0	89.0	60.0
	BLK-DBUW-08S	8	19.0	22.0	89.0	60.0
	BLK-DBUW-10S	10	22.0	25.0	91.0	59.0
	BLK-DBUW-12S	12	24.0	28.0	91.0	59.0
	BLK-DBUW-14S	14	27.0	30.0	107.0	72.0
PN 400	BLK-DBUW-16S	16	30.0	35.0	107.0	71.0
	BLK-DBUW-20S	20	36.0	38.0	114.0	71.0
	BLK-DBUW-25S	25	46.0	45.0	120.0	72.0
	BLK-DBUW-30S	30	50.0	50.0	126.0	73.0
PN 315	BLK-DBUW-38S	38	60.0	60.0	133.0	72.0



- All dimensions in millimeters unless specified as "inch". Dimension are for reference only, subject to change
- Dimensions given approximate length with tightened nut.

DBUE Bulkhead Union Elbow

Series	Part Number	Tube O.D	Dimension										
			H	H1	h	L	L1	L2	A	A1	T		
L Light PN 315	BLK-DBUE-06L	6	14.0	17.0	12.0	27.0	42.0	14.0	12.0	27.0	14.0	27.0	M12 x 1.5
	BLK-DBUE-08L	8	17.0	19.0	12.0	29.0	42.0	17.0	14.0	27.0	14.0	27.0	M14 x 1.5
	BLK-DBUE-10L	10	19.0	22.0	14.0	30.0	43.0	18.0	15.0	28.0	16.0	28.0	M16 x 1.5
	BLK-DBUE-12L	12	22.0	24.0	17.0	32.0	44.0	20.0	17.0	29.0	17.0	29.0	M18 x 1.5
	BLK-DBUE-15L	15	27.0	30.0	19.0	36.0	46.0	23.0	21.0	31.0	19.0	31.0	M22 x 1.5
	BLK-DBUE-18L	18	32.0	36.0	24.0	40.0	49.0	24.0	23.5	32.5	21.0	32.5	M26 x 1.5
PN 160	BLK-DBUE-22L	22	36.0	41.0	27.0	44.0	51.0	30.0	27.5	34.5	23.0	34.5	M30 x 2.0
	BLK-DBUE-28L	28	41.0	46.0	36.0	47.0	52.0	34.0	30.5	35.5	26.0	35.5	M36 x 2.0
	BLK-DBUE-35L	35	50.0	55.0	41.0	56.0	58.0	39.0	34.5	36.5	29.0	36.5	M45 x 2.0
	BLK-DBUE-42L	42	60.0	65.0	50.0	63.0	59.0	43.0	40.0	36.0	33.0	36.0	M52 x 2.0
S Heavy PN 630	BLK-DBUE-06S	6	17.0	19.0	12.0	31.0	44.0	17.0	16.0	29.0	16.0	29.0	M14 x 1.5
	BLK-DBUE-08S	8	19.0	22.0	14.0	32.0	44.0	18.0	17.0	29.0	17.0	29.0	M16 x 1.5
	BLK-DBUE-10S	10	22.0	24.0	17.0	34.0	46.0	20.0	17.5	29.5	18.0	29.5	M18 x 1.5
	BLK-DBUE-12S	12	24.0	27.0	17.0	38.0	47.0	21.0	21.5	30.5	19.0	30.5	M20 x 1.5
	BLK-DBUE-14S	14	27.0	30.0	19.0	40.0	50.0	23.0	22.0	32.0	20.0	32.0	M22 x 1.5
PN 400	BLK-DBUE-16S	16	30.0	32.0	24.0	43.0	50.0	24.0	24.5	31.5	21.0	31.5	M24 x 1.5
	BLK-DBUE-20S	20	36.0	41.0	27.0	48.0	55.0	30.0	26.5	33.5	23.0	33.5	M30 x 2.0
	BLK-DBUE-25S	25	46.0	46.0	36.0	54.0	59.0	34.0	30.0	35.0	26.0	35.0	M36 x 2.0
	BLK-DBUE-30S	30	50.0	50.0	41.0	62.0	64.0	39.0	35.5	37.5	29.0	37.5	M42 x 2.0
PN 315	BLK-DBUE-38S	38	60.0	65.0	50.0	72.0	68.0	43.0	41.0	37.0	33.0	37.0	M52 x 2.0



D=16mm Max Bulkhead thickness

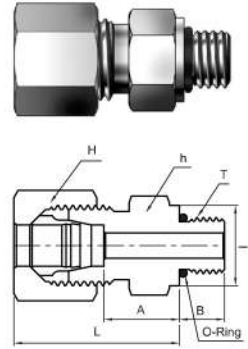
- All dimensions in millimeters unless specified as "inch". Dimension are for reference only, subject to change
- Dimensions given approximate length with tightened nut.

DCM-U0/M0 (Unified / Metric Parallel)

Male Connector with O-Ring.

Unified Thread Type

Series	Part Number	Tube O.D	Dimension						
			H	h	l	L	A	B	T
L Light PN 315	BLK-DCM-08L-04U0	8	17.0	17.0	14.4	25.0	9.0	10.0	7/16-20UNF-2A
	BLK-DCM-10L-04U0	10	19.0	17.0	14.4	26.0	10.0	11.0	7/16-20UNF-2A
	BLK-DCM-12L-06U0	12	22.0	19.0	17.6	26.0	10.0	11.0	9/16-18UNF-2A
	BLK-DCM-12L-08U0	12	22.0	24.0	22.3	28.0	11.0	13.0	3/4-16UNF-2A
	BLK-DCM-12L-10U0	12	22.0	27.0	25.5	29.0	12.7	14.3	7/8-14UNF-2A
	BLK-DCM-15L-08U0	15	27.0	24.0	22.3	29.0	11.0	14.0	3/4-16UNF-2A
	BLK-DCM-15L-10U0	15	27.0	27.0	25.5	30.0	12.7	15.3	7/8-14UNF-2A
PN 160	BLK-DCM-18L-08U0	18	32.0	27.0	22.3	31.0	11.0	14.5	3/4-16UNF-2A
	BLK-DCM-18L-10U0	18	32.0	27.0	25.5	31.0	12.7	14.8	7/8-14UNF-2A
	BLK-DCM-22L-10U0	22	36.0	32.0	25.5	33.0	12.7	16.8	7/8-14UNF-2A
	BLK-DCM-22L-12U0	22	36.0	32.0	31.9	33.0	15.0	16.5	1 1/16-12UN-2A
	BLK-DCM-22L-16U0	22	36.0	41.0	38.2	34.0	15.0	17.5	1 5/16-12UN-2A
	BLK-DCM-28L-12U0	28	41.0	41.0	31.9	34.0	15.0	17.5	1 1/16-12UN-2A
	BLK-DCM-28L-16U0	28	41.0	41.0	38.2	34.0	15.0	17.5	1 5/16-12UN-2A
S Heavy PN 630	BLK-DCM-35L-16U0	35	50.0	46.0	38.2	39.0	15.0	17.5	1 5/16-12UN-2A
	BLK-DCM-35L-20U0	35	50.0	50.0	47.7	39.0	15.0	17.5	1 5/8-12UN-2A
	BLK-DCM-42L-20U0	42	60.0	55.0	47.7	42.0	15.0	19.0	1 5/8-12UN-2A
	BLK-DCM-08S-04U0	8	19.0	17.0	16.0	30.0	9.0	15.0	7/16-20UNF-2A
	BLK-DCM-10S-06U0	10	22.0	19.0	17.6	31.0	10.0	14.5	9/16-18UNF-2A
	BLK-DCM-12S-06U0	12	24.0	22.0	17.6	31.0	10.0	14.5	9/16-18UNF-2A
	BLK-DCM-12S-08U0	12	24.0	24.0	22.3	34.0	11.0	17.5	3/4-16UNF-2A
PN 400	BLK-DCM-16S-08U0	16	30.0	24.0	22.3	34.0	11.0	15.5	3/4-16UNF-2A
	BLK-DCM-16S-10U0	16	30.0	27.0	25.5	37.0	12.7	18.8	7/8-14UNF-2A
	BLK-DCM-20S-08U0	20	36.0	32.0	22.3	42.0	11.0	20.5	3/4-16UNF-2A
	BLK-DCM-20S-10U0	20	36.0	32.0	25.5	42.0	12.7	20.8	7/8-14UNF-2A
	BLK-DCM-25S-12U0	20	36.0	32.0	31.9	42.0	15.0	20.5	1 1/16-12UN-2A
	BLK-DCM-25S-12U0	25	46.0	36.0	31.9	47.0	15.0	23.0	1 1/16-12UN-2A
	BLK-DCM-25S-16U0	25	46.0	41.0	38.2	47.0	15.0	23.0	1 5/16-12UN-2A
PN 315	BLK-DCM-30S-16U0	30	50.0	46.0	38.2	50.0	15.0	23.5	1 5/16-12UN-2A
	BLK-DCM-30S-20U0	30	50.0	50.0	47.7	50.0	15.0	23.5	1 5/8-12UN-2A
PN 315	BLK-DCM-38S-20U0	38	60.0	55.0	47.7	57.0	15.0	26.0	1 5/8-12UN-2A



Metric Parallel Thread Type

Series	Part Number	Tube O.D	Dimension						
			H	h	l	L	A	B	T
L Light PN 315	BLK-DCM-06L-M010	6	14.0	14.0	-	23.0	10.0	8.5	M10 x 1.0
	BLK-DCM-08L-M012	8	17.0	17.0	-	25.0	11.5	10.0	M12 x 1.5
	BLK-DCM-10L-M014	10	19.0	19.0	-	26.0	11.5	11.0	M14 x 1.5
	BLK-DCM-12L-M016	12	22.0	22.0	-	27.0	13.0	12.0	M16 x 1.5
	BLK-DCM-15L-M018	15	27.0	24.0	-	29.0	14.5	13.5	M18 x 1.5
	BLK-DCM-18L-M022	18	32.0	27.0	-	30.0	15.5	14.0	M22 x 1.5
PN 160	BLK-DCM-22L-M026	22	36.0	32.0	-	32.0	16.0	16.0	M26 x 1.5
	BLK-DCM-28L-M033	28	41.0	41.0	38.0	34.0	19.0	17.5	M33 x 2.0
	BLK-DCM-35L-M042	35	50.0	50.0	48.0	39.0	19.5	17.5	M42 x 2.0
S Heavy PN 630	BLK-DCM-06L-M010	6	17.0	17.0	-	27.0	11.5	12.0	M12 x 1.0
	BLK-DCM-08L-M012	8	19.0	19.0	-	27.0	11.5	12.0	M14 x 1.5
	BLK-DCM-10L-M014	10	22.0	22.0	-	29.0	13.0	12.5	M1 x 1.5
	BLK-DCM-12L-M016	12	24.0	24.0	-	29.0	14.5	13.0	M18 x 1.5
PN 400	BLK-DCM-16S-M022	16	30.0	27.0	-	33.0	15.5	15.0	M22 x 1.5
	BLK-DCM-20S-M027	20	36.0	32.0	-	37.0	19.0	15.0	M27 x 2.0
	BLK-DCM-25S-M033	25	46.0	41.0	38.0	41.0	19.0	17.0	M33 x 2.0
	BLK-DCM-30S-M042	30	50.0	50.0	48.0	45.0	19.5	18.5	M42 x 2.0

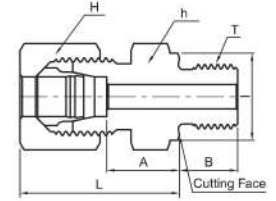
- All dimensions in millimeters unless specified as "inch". Dimension are for reference only, subject to change
- Dimensions given approximate length with tightened nut.

DCM-GM (BSP Parallel)

Male Connector

BSP Parallel Thread Type

Series	Part Number	Tube O.D	Dimension						
			H	h	l	L	A	B	T
L Light PN 315	BLK-DCM-06L-01GM	6	14.0	14.0	14.0	23.0	8.5	8.0	PF 1/8
	BLK-DCM-06L-02GM	6	14.0	19.0	18.0	25.0	10.0	12.0	PF 1/4
	BLK-DCM-06L-03GM	6	14.0	22.0	22.0	26.0	11.5	12.0	PF 3/8
	BLK-DCM-06L-04GM	6	14.0	27.0	26.0	27.0	12.0	14.0	PF 1/2
	BLK-DCM-08L-01GM	8	17.0	14.0	14.0	23.0	8.5	8.0	PF 1/8
	BLK-DCM-08L-02GM	8	17.0	19.0	18.0	25.0	10.0	12.0	PF 1/4
	BLK-DCM-08L-03GM	8	17.0	22.0	22.0	26.0	11.5	12.0	PF 3/8
	BLK-DCM-08L-04GM	8	17.0	27.0	26.0	27.0	12.0	14.0	PF 1/2
	BLK-DCM-10L-02GM	10	19.0	19.0	18.0	26.0	11.0	12.0	PF 1/4
	BLK-DCM-10L-03GM	10	19.0	22.0	22.0	27.0	12.5	12.0	PF 3/8
	BLK-DCM-10L-04GM	10	19.0	27.0	26.0	28.0	13.0	14.0	PF 1/2
	BLK-DCM-12L-02GM	12	22.0	19.0	18.0	27.0	12.0	12.0	PF 1/4
	BLK-DCM-12L-03GM	12	22.0	22.0	22.0	27.0	12.5	12.0	PF 3/8
	BLK-DCM-12L-04GM	12	22.0	27.0	26.0	28.0	13.0	14.0	PF 1/2
	BLK-DCM-12L-06GM	12	22.0	32.0	32.0	29.0	14.0	16.0	PF 3/4
	BLK-DCM-15L-03GM	15	27.0	24.0	22.0	29.0	13.5	12.0	PF 3/8
	BLK-DCM-15L-04GM	15	27.0	27.0	26.0	29.0	14.0	14.0	PF 1/2
	BLK-DCM-15L-06GM	15	27.0	32.0	32.0	30.0	15.0	16.0	PF 3/4
BLK-DCM-18L-03GM	18	32.0	27.0	22.0	29.5	14.0	12.0	PF 3/8	
BLK-DCM-18L-04GM	18	32.0	27.0	26.0	31.0	14.5	14.0	PF 1/2	
BLK-DCM-18L-06GM	18	32.0	32.0	32.0	30.0	14.5	16.0	PF 3/4	
PN 160	BLK-DCM-22L-04GM	22	36.0	32.0	26.0	33.0	16.5	14.0	PF 1/2
	BLK-DCM-22L-06GM	22	36.0	32.0	32.0	33.0	16.5	16.0	PF 3/4
	BLK-DCM-28L-06GM	28	41.0	41.0	32.0	34.0	17.5	16.0	PF 3/4
	BLK-DCM-28L-08GM	28	41.0	41.0	39.0	34.0	17.5	18.0	PF 1
	BLK-DCM-35L-08GM	35	50.0	46.0	39.0	39.0	17.5	18.0	PF 1
	BLK-DCM-35L-10GM	35	50.0	50.0	49.0	39.0	17.5	20.0	PF 1 1/4
BLK-DCM-42L-12GM	42	60.0	55.0	55.0	42.0	19.0	22.0	PF 1 1/2	
S Heavy PB 630	BLK-DCM-06S-02GM	6	17.0	19.0	18.0	28.0	13.0	12.0	PF 1/4
	BLK-DCM-06S-04GM	6	17.0	27.0	26.0	33.0	18.0	14.0	PF 1/2
	BLK-DCM-08S-02GM	8	19.0	19.0	18.0	30.0	15.0	12.0	PF 1/4
	BLK-DCM-08S-03GM	8	19.0	22.0	22.0	30.0	15.5	12.0	PF 3/8
	BLK-DCM-10S-02GM	10	22.0	19.0	18.0	31.0	14.5	12.0	PF 1/4
	BLK-DCM-10S-03GM	10	22.0	22.0	22.0	31.0	15.0	12.0	PF 3/8
	BLK-DCM-10S-04GM	10	22.0	27.0	26.0	34.0	17.5	14.0	PF 1/2
	BLK-DCM-12S-02GM	12	24.0	22.0	18.0	33.0	16.5	12.0	PF 1/4
	BLK-DCM-12S-03GM	12	24.0	22.0	22.0	33.0	17.0	12.0	PF 3/8
	BLK-DCM-12S-04GM	12	24.0	27.0	26.0	34.0	17.5	14.0	PF 1/2
BLK-DCM-14S-03GM	14	27.0	24.0	22.0	36.0	18.5	12.0	PF 3/8	
BLK-DCM-14S-04GM	14	27.0	27.0	26.0	37.0	19.0	14.0	PF 1/2	
PB 400	BLK-DCM-16S-03GM	16	30.0	27.0	22.0	36.0	18.0	12.0	PF 3/8
	BLK-DCM-16S-04GM	16	30.0	27.0	26.0	37.0	18.5	14.0	PF 1/2
	BLK-DCM-16S-06GM	16	30.0	32.0	32.0	39.0	20.5	16.0	PF 3/4
	BLK-DCM-20S-04GM	20	36.0	32.0	26.0	42.0	20.5	14.0	PF 1/2
	BLK-DCM-20S-06GM	20	36.0	32.0	32.0	42.0	20.5	16.0	PF 3/4
	BLK-DCM-25S-06GM	25	46.0	41.0	32.0	47.0	23.0	16.0	PF 3/4
BLK-DCM-25S-08GM	25	46.0	41.0	39.0	47.0	23.0	18.0	PF 1	
PB 250	BLK-DCM-30S-08GM	30	50.0	46.0	39.0	50.0	23.5	18.0	PF 1
	BLK-DCM-30S-10GM	30	50.0	50.0	49.0	50.0	23.5	20.0	PF 1 1/4
	BLK-DCM-38S-10GM	38	60.0	55.0	49.0	57.0	26.0	20.0	PF 1 1/4
	BLK-DCM-38S-12GM	38	60.0	55.0	55.0	57.0	26.0	22.0	PF 1 1/2



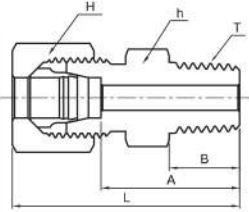
• All dimensions in millimeters unless specified as "inch". Dimension are for reference only, subject to change
 • Dimensions given approximate length with tightened nut.

DCM-R (BSP Tapered)

Male Connector

BSP Tapered Thread Type

Series	Part Number	Tube O.D	Dimension					
			H	h	L	A	B	T
LL Very Light PN 100	BLK-DCM-04LL-01R	4	10.0	11.0	26.0	16.0	8.0	PT 1/8
	BLK-DCM-06LL-01R	6	12.0	11.0	26.0	14.5	8.0	PT 1/8
	BLK-DCM-08LL-01R	8	14.0	12.0	28.0	16.5	8.0	PT 1/8
	BLK-DCM-08LL-02R	8	14.0	14.0	32.0	20.5	12.0	PT 1/4
	BLK-DCM-10LL-02R	10	17.0	14.0	32.0	20.5	12.0	PT 1/4
	BLK-DCM-12LL-02R	12	19.0	17.0	32.0	20.0	12.0	PT 1/4
	BLK-DCM-12LL-03R	12	19.0	17.0	32.0	20.0	12.0	PT 3/8
L Light PN 315	BLK-DCM-06L-01R	6	14.0	12.0	30.0	15.0	8.0	PT 1/8
	BLK-DCM-08L-02R	8	17.0	17.0	35.0	20.0	12.0	PT 1/4
	BLK-DCM-10L-02R	10	19.0	17.0	36.0	21.0	12.0	PT 1/4
	BLK-DCM-12L-02R	12	22.0	19.0	37.0	22.0	12.0	PT 1/4
	BLK-DCM-12L-03R	12	22.0	19.0	37.0	22.0	12.0	PT 3/8
	BLK-DCM-12L-04R	12	22.0	24.0	39.0	24.0	14.0	PT 1/2
	BLK-DCM-15L-03R	15	27.0	24.0	38.0	23.0	12.0	PT 3/8
BLK-DCM-15L-04R	15	27.0	24.0	40.0	25.0	14.0	PT 1/2	
BLK-DCM-18L-04R	18	32.0	27.0	41.0	25.5	14.0	PT 1/2	
PN 160	BLK-DCM-18L-04R	22	36.0	32.0	46.0	29.5	16.0	PT 3/4



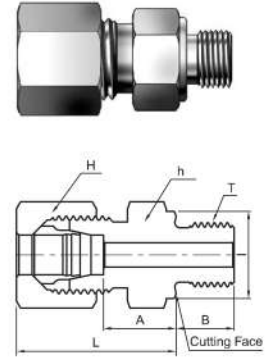
- All dimensions in millimeters unless specified as "inch". Dimension are for reference only, subject to change
- Dimensions given approximate length with tightened nut.

DCM-M (Metric Parallel)

Male Connector

Metric Parallel Thread Type

Series	Part Number	Tube O.D	Dimension						
			H	h	I	L	A	B	T
L Light PN 315	BLK-DCM-06L-M10M	6	14.0	14.0	14.0	23.0	8.5	8.0	M10 x 1.0
	BLK-DCM-08L-M12M	8	17.0	17.0	17.0	25.0	10.0	12.0	M12 x 1.5
	BLK-DCM-08L-M18M	8	17.0	24.0	23.0	26.0	11.5	12.0	M18 x 1.5
	BLK-DCM-10L-M14M	10	19.0	19.0	19.0	26.0	11.0	12.0	M14 x 1.5
	BLK-DCM-10L-M16M	10	19.0	22.0	21.0	27.0	12.0	12.0	M16 x 1.5
	BLK-DCM-10L-M18M	10	19.0	24.0	23.0	27.0	12.5	12.0	M18 x 1.5
	BLK-DCM-10L-M22M	10	19.0	27.0	27.0	29.0	14.0	14.0	M22 x 1.5
	BLK-DCM-12L-M14M	12	22.0	19.0	19.0	26.0	11.0	12.0	M14 x 1.5
	BLK-DCM-12L-M16M	12	22.0	22.0	21.0	27.0	12.5	12.0	M16 x 1.5
	BLK-DCM-12L-M18M	12	22.0	24.0	23.0	27.0	12.5	12.0	M18 x 1.5
	BLK-DCM-12L-M14M	12	22.0	27.0	27.0	29.0	14.0	14.0	M22 x 1.5
	BLK-DCM-15L-M16M	15	27.0	24.0	21.0	28.0	13.0	12.0	M16 x 1.5
	BLK-DCM-15L-M18M	15	27.0	24.0	23.0	29.0	13.5	12.0	M18 x 1.5
	BLK-DCM-15L-M22M	15	27.0	27.0	27.0	30.0	15.0	14.0	M22 x 1.5
	BLK-DCM-18L-M18M	18	32.0	27.0	23.0	30.0	14.0	12.0	M18 x 1.5
BLK-DCM-18L-M22M	18	32.0	27.0	27.0	31.0	14.5	14.0	M22 x 1.5	
PN 160	BLK-DCM-22L-M22M	22	36.0	32.0	27.0	33.0	16.5	14.0	M22 x 1.5
	BLK-DCM-22L-M26M	22	36.0	32.0	31.0	33.0	16.5	16.0	M26 x 1.5
	BLK-DCM-28L-M33M	28	41.0	41.0	39.0	34.0	17.5	18.0	M33 x 2.0
	BLK-DCM-35L-M42M	35	50.0	50.0	49.0	39.0	17.5	20.0	M42 x 2.0
	BLK-DCM-42L-M22M	42	60.0	55.0	55.0	42.0	19.0	22.0	M48 x 2.0
S Heavy PB 630	BLK-DCM-06S-M12M	6	17.0	17.0	17.0	28.0	13.0	12.0	M12 x 1.5
	BLK-DCM-08S-M14M	8	19.0	19.0	19.0	30.0	15.0	12.0	M14 x 1.5
	BLK-DCM-10S-M16M	10	22.0	22.0	21.0	31.0	15.0	12.0	M16 x 1.5
	BLK-DCM-12S-M18M	12	24.0	24.0	23.0	33.0	17.0	12.0	M18 x 1.5
	BLK-DCM-12S-M22M	12	24.0	27.0	27.0	34.0	17.5	14.0	M22 x 1.5
	BLK-DCM-14S-M20M	14	27.0	27.0	25.0	37.0	19.0	14.0	M20 x 1.5
PB 400	BLK-DCM-16S-M18M	16	30.0	27.0	23.0	36.0	18.0	12.0	M18 x 1.5
	BLK-DCM-16S-M22M	16	30.0	27.0	27.0	37.0	18.5	14.0	M22 x 1.5
	BLK-DCM-20S-M27M	20	36.0	32.0	32.0	42.0	20.5	16.0	M27 x 2.0
	BLK-DCM-25S-M33M	25	46.0	41.0	39.0	47.0	23.0	18.0	M33 x 2.0
PB 250	BLK-DCM-30S-M42M	30	50.0	50.0	49.0	50.0	23.5	20.0	M42 x 2.0
	BLK-DCM-38S-M48M	38	60.0	55.0	55.0	57.0	26.0	22.0	M48 x 2.0



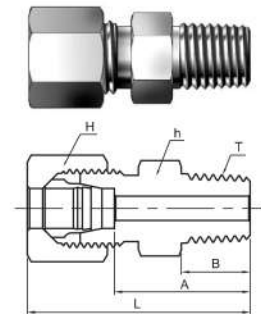
DCM-MK (Metric Tapered)

Male Connector

Metric Tapered Thread Type

Series	Part Number	Tube O.D	Dimension					
			H	h	L	A	B	T
LL Very Light	BLK-DCM-04LL-M06K	4	10	9	26	16	8	M6 x 1keg
	BLK-DCM-04LL-M08K	4	10	10	26	16	8	M8 x 1keg
PN 100	BLK-DCM-06LL-M10K	6	12	11	26	14.5	8	M10 x 1keg
	BLK-DCM-08LL-M10K	8	14	12	28	16.5	8	M10 x 1keg

- All dimensions in millimeters unless specified as "inch". Dimension are for reference only, subject to change
- Dimensions given approximate length with tightened nut.

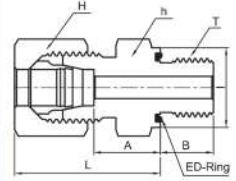


DCM-GED (BSP Parallel with ED-Ring)

Male Connector with ED-Ring

BSP Parallel Threads Type

Series	Part Number	Tube O.D	Dimension						
			H	h	l	L	A	B	T
L Light PN 315	BLK-DCM-06L-01GED	6	14.0	14.0	14.0	23.0	8.5	8.0	PF 1/8
	BLK-DCM-06L-02GED	6	14.0	19.0	19.0	25.0	10.0	12.0	PF 1/4
	BLK-DCM-08L-01GED	8	17.0	14.0	14.0	24.0	9.5	8.0	PF 1/8
	BLK-DCM-08L-02GED	8	17.0	19.0	19.0	25.0	10.0	12.0	PF 1/4
	BLK-DCM-08L-03GED	8	17.0	22.0	22.0	26.0	11.5	12.0	PF 3/8
	BLK-DCM-10L-02GED	10	19.0	19.0	19.0	26.0	11.0	12.0	PF 1/4
	BLK-DCM-10L-03GED	10	19.0	22.0	22.0	27.0	12.5	12.0	PF 3/8
	BLK-DCM-10L-04GED	10	19.0	27.0	27.0	28.0	13.0	14.0	PF 1/2
	BLK-DCM-12L-02GED	12	22.0	19.0	19.0	27.0	12.0	12.0	PF 1/4
	BLK-DCM-12L-03GED	12	22.0	22.0	22.0	27.0	12.5	12.0	PF 3/8
	BLK-DCM-12L-04GED	12	22.0	27.0	27.0	28.0	13.0	14.0	PF 1/2
	BLK-DCM-15L-03GED	15	27.0	24.0	22.0	29.0	13.5	12.0	PF 3/8
	BLK-DCM-15L-04GED	15	27.0	27.0	27.0	29.0	14.0	14.0	PF 1/2
	BLK-DCM-18L-04GED	18	32.0	27.0	27.0	31.0	14.5	14.0	PF 1/2
BLK-DCM-18L-06GED	18	32.0	32.0	32.0	31.0	14.5	16.0	PF 3/4	
PN 160	BLK-DCM-22L-06GED	22	36.0	32.0	32.0	33.0	16.5	16.0	PF 3/4
	BLK-DCM-28L-08GED	28	41.0	41.0	40.0	34.0	17.5	18.0	PF 1
	BLK-DCM-35L-10GED	35	50.0	50.0	50.0	39.0	17.5	20.0	PF 1 1/4
	BLK-DCM-42L-12GED	42	60.0	55.0	55.0	42.0	19.0	22.0	PF 1 1/2
S Heavy PB 630	BLK-DCM-06S-02GED	6	17.0	19.0	19.0	28.0	13.0	12.0	PF 1/4
	BLK-DCM-08S-02GED	8	19.0	19.0	19.0	30.0	15.0	12.0	PF 1/4
	BLK-DCM-08S-03GED	8	19.0	22.0	22.0	30.0	15.5	12.0	PF 3/8
	BLK-DCM-10S-02GED	10	22.0	19.0	19.0	31.0	14.5	12.0	PF 1/4
	BLK-DCM-10S-03GED	10	22.0	22.0	22.0	31.0	15.0	12.0	PF 3/8
	BLK-DCM-10S-04GED	10	22.0	27.0	27.0	34.0	17.5	14.0	PF 1/2
	BLK-DCM-12S-02GED	12	24.0	22.0	19.0	33.0	16.5	12.0	PF 1/4
	BLK-DCM-12S-03GED	12	24.0	22.0	22.0	33.0	17.0	12.0	PF 3/8
	BLK-DCM-12S-04GED	12	24.0	27.0	32.0	34.0	17.5	14.0	PF 1/2
BLK-DCM-14S-04GED	14	27.0	27.0	27.0	37.0	19.0	14.0	PF 1/2	
PN 400	BLK-DCM-16S-03GED	16	30.0	27.0	22.0	36.0	18.0	12.0	PF 3/8
	BLK-DCM-16S-04GED	16	30.0	27.0	27.0	37.0	18.5	14.0	PF 1/2
	BLK-DCM-16S-06GED	16	30.0	32.0	27.0	39.0	20.5	16.0	PF 3/4
	BLK-DCM-20S-06GED	20	36.0	32.0	32.0	42.0	20.5	16.0	PF 3/4
	BLK-DCM-25S-04GED	25	46.0	41.0	27.0	47.0	23.0	14.0	PF 1/2
	BLK-DCM-25S-06GED	25	46.0	41.0	32.0	47.0	23.0	16.0	PF 3/4
	BLK-DCM-25S-08GED	25	46.0	41.0	40.0	47.0	23.0	18.0	PF 1
PN 315	BLK-DCM-30S-10GED	30	50.0	50.0	50.0	50.0	23.5	20.0	PF 1 1/4
	BLK-DCM-38S-12GED	38	60.0	55.0	55.0	57.0	26.0	22.0	PF 1 1/2



- All dimensions in millimeters unless specified as "inch". Dimension are for reference only, subject to change
- Dimensions given approximate length with tightened nut.

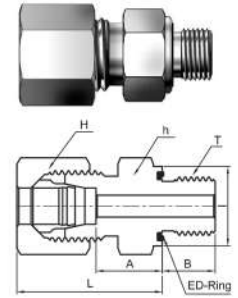
DCM-MED (Metric Parallel with ED-Ring)

Male Connector with ED-Ring

Metric Parallel Thread Type

Series	Part Number	Tube O.D	Dimension						
			H	h	l	L	A	B	T
L Light PN315	BLK-DCM-06L-M10ED	6	14.0	14.0	14.0	23.0	8.5	8.0	M10 x 1.0
	BLK-DCM-08L-M12ED	8	17.0	17.0	17.0	25.0	10.0	12.0	M12 x 1.5
	BLK-DCM-10L-M14ED	10	19.0	19.0	19.0	26.0	11.0	12.0	M14 x 1.5
	BLK-DCM-12L-M16ED	12	22.0	22.0	22.0	27.0	12.5	12.0	M16 x 1.5
	BLK-DCM-12L-M18ED	12	22.0	24.0	24.0	27.0	12.5	12.0	M18 x 1.5
	BLK-DCM-12L-M22ED	12	22.0	27.0	27.0	29.0	14.0	14.0	M22 x 1.5
	BLK-DCM-15L-M18ED	15	27.0	24.0	24.0	29.0	13.5	12.0	M18 x 1.5
	BLK-DCM-15L-M22ED	15	27.0	27.0	27.0	30.0	15.0	14.0	M22 x 1.5
PN 160	BLK-DCM-18L-M22ED	18	32.0	27.0	27.0	31.0	14.5	14.0	M22 x 1.5
	BLK-DCM-22L-M26ED	22	36.0	32.0	32.0	33.0	16.5	16.0	M26 x 1.5
	BLK-DCM-28L-M33ED	28	41.0	41.0	40.0	34.0	17.5	18.0	M33 x 2.0
	BLK-DCM-35L-M42ED	35	50.0	50.0	50.0	39.0	17.5	20.0	M42 x 2.0
S Heavy PB 630	BLK-DCM-42L-M48ED	42	60.0	55.0	55.0	42.0	19.0	22.0	M48 x 2.0
	BLK-DCM-06S-M12ED	6	17.0	17.0	17.0	28.0	13.0	12.0	M12 x 1.5
	BLK-DCM-08S-M14ED	8	19.0	19.0	19.0	30.0	15.0	12.0	M14 x 1.5
	BLK-DCM-10S-M16ED	10	22.0	22.0	22.0	31.0	15.0	12.0	M16 x 1.5
	BLK-DCM-12S-M18ED	12	24.0	24.0	24.0	33.0	17.0	12.0	M18 x 1.5
PN 400	BLK-DCM-14S-M20ED	14	27.0	27.0	26.0	37.0	19.0	14.0	M20 x 1.5
	BLK-DCM-16S-M22ED	16	30.0	27.0	27.0	37.0	18.5	14.0	M22 x 1.5
	BLK-DCM-20S-M27ED	20	36.0	32.0	32.0	42.0	20.5	16.0	M27 x 2.0
	BLK-DCM-25S-M33ED	25	46.0	41.0	40.0	47.0	23.0	18.0	M33 x 2.0
PN 315	BLK-DCM-30S-M42ED	30	50.0	50.0	50.0	50.0	23.5	20.0	M42 x 2.0
	BLK-DCM-38S-M48ED	38	60.0	55.0	55.0	57.0	26.0	22.0	M48 x 2.0

- All dimensions in millimeters unless specified as "inch". Dimension are for reference only, subject to change
- Dimensions given approximate length with tightened nut.

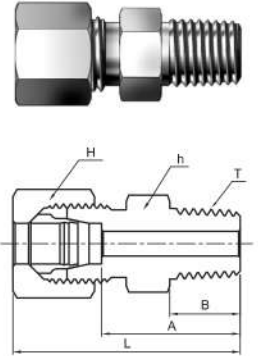


DCM-N (NPT Thread)

Male Connector

NPT Thread Type

Series	Part Number	Tube O.D	Dimension					
			H	h	L	A	B	T
LL Very Light PN 100	BLK-DCM-04LL-01N	4	10.0	11.0	28.0	18.5	9.9	NPT 1/8
	BLK-DCM-06LL-01N	6	12.0	11.0	28.0	16.5	9.9	NPT 1/8
	BLK-DCM-08LL-01N	8	14.0	12.0	30.0	18.5	9.9	NPT 1/8
L Light PN 315	BLK-DCM-06L-01N	6	14.0	12.0	32.0	17.0	9.9	NPT 1/8
	BLK-DCM-06L-02N	6	14.0	17.0	38.0	23.0	14.2	NPT 1/4
	BLK-DCM-08L-02N	8	17.0	17.0	38.0	23.0	14.2	NPT 1/4
	BLK-DCM-10L-02N	10	19.0	17.0	39.0	24.0	14.2	NPT 1/4
	BLK-DCM-10L-03N	10	19.0	19.0	40.0	25.0	14.2	NPT 3/8
	BLK-DCM-12L-02N	12	22.0	19.0	40.0	25.0	14.2	NPT 1/4
	BLK-DCM-12L-03N	12	22.0	19.0	40.0	25.0	14.2	NPT 3/8
	BLK-DCM-12L-04N	12	22.0	22.0	45.0	30.0	19.1	NPT 1/2
	BLK-DCM-15L-04N	15	27.0	24.0	46.0	31.0	19.1	NPT 1/2
BLK-DCM-18L-04N	18	32.0	27.0	48.0	31.5	19.1	NPT 1/2	
PN 160	BLK-DCM-22L-06N	22	36.0	32.0	50.0	33.5	19.1	NPT 3/4
	BLK-DCM-28L-08N	28	41.0	41.0	56.0	39.5	23.9	NPT 1
	BLK-DCM-35L-10N	35	50.0	46.0	62.0	40.5	23.9	NPT 1 1/4
	BLK-DCM-42L-12N	42	60.0	55.0	65.0	42.0	25.4	NPT 1 1/2
S Heavy PN 630	BLK-DCM-06S-02N	6	17.0	17.0	43.0	28.0	14.2	NPT 1/4
	BLK-DCM-08S-02N	8	19.0	17.0	43.0	28.0	14.2	NPT 1/4
	BLK-DCM-10S-02N	10	22.0	19.0	44.0	27.5	14.2	NPT 1/4
	BLK-DCM-10S-03N	10	22.0	19.0	44.0	27.5	14.2	NPT 3/8
	BLK-DCM-12S-02N	12	24.0	22.0	46.0	29.5	14.2	NPT 1/4
	BLK-DCM-12S-03N	12	24.0	22.0	46.0	29.5	14.2	NPT 3/8
	BLK-DCM-12S-04N	12	24.0	22.0	51.0	34.5	19.1	NPT 1/2
	BLK-DCM-14S-04N	14	27.0	24.0	54.0	36.0	19.1	NPT 1/2
PN 400	BLK-DCM-16S-04N	16	30.0	27.0	54.0	35.5	19.1	NPT 1/2
	BLK-DCM-20S-06N	20	36.0	32.0	59.0	37.5	19.1	NPT 3/4
	BLK-DCM-25S-08N	25	46.0	41.0	69.0	45.0	23.9	NPT 1
	BLK-DCM-30S-10N	30	50.0	46.0	73.0	46.5	23.9	NPT 1 1/4
PN 315	BLK-DCM-38S-12N	38	60.0	55.0	80.0	49.0	25.4	NPT 1 1/2



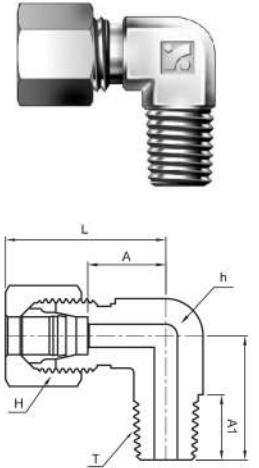
- All dimensions in millimeters unless specified as "inch". Dimension are for reference only, subject to change
- Dimensions given approximate length with tightened nut.

DCM-R (BSP Tapered / Metric Tapered)

Male Elbow

BSP Tapered Thread Type

Series	Part Number	Tube O.D	Dimension						
			H	h	L	L1	A	B	T
LL Very Light PN 100	BLK-DME-04LL-01R	4.0	10.0	9.0	21.0	17.0	11.0	10.0	PT 1/8
	BLK-DME-06LL-01R	6.0	12.0	9.0	21.0	17.0	9.5	10.0	PT 1/8
	BLK-DME-08LL-01R	8.0	14.0	12.0	23.0	20.0	11.5	10.0	PT 1/8
	BLK-DME-10LL-02R	10.0	17.0	14.0	24.0	23.0	12.5	14.0	PT 1/4
	BLK-DME-12LL-02R	12.0	19.0	17.0	25.0	23.0	13.0	14.0	PT 1/4
L Light PN 315	BLK-DME-06L-01R	6.0	14.0	12.0	27.0	20.0	12.0	10.0	PT 1/8
	BLK-DME-08L-02R	8.0	17.0	12.0	29.0	26.0	14.0	14.0	PT 1/4
	BLK-DME-10L-02R	10.0	19.0	14.0	30.0	27.0	15.0	14.0	PT 1/4
	BLK-DME-12L-03R	12.0	22.0	17.0	32.0	28.0	17.0	15.0	PT 3/8
	BLK-DME-15L-04R	15.0	27.0	19.0	36.0	34.0	21.0	19.0	PT 1/2
S Heavy PN 400	BLK-DCM-18L-04R	18.0	32.0	24.0	40.0	36.0	23.5	19.0	PT 1/2
	BLK-DCM-06S-02R	6.0	17.0	12.0	31.0	26.0	16.0	14.0	PT 1/4
	BLK-DCM-08S-02R	8.0	19.0	14.0	32.0	27.0	17.0	14.0	PT 1/4
	BLK-DCM-10S-03R	10.0	22.0	17.0	34.0	28.0	17.5	15.0	PT 3/8
	BLK-DCM-12S-03R	12.0	24.0	17.0	38.0	28.0	21.5	15.0	PT 3/8
	BLK-DCM-14S-04R	14.0	27.0	19.0	40.0	34.0	22.0	19.0	PT 1/2
	BLK-DCM-16S-04R	16.0	30.0	24.0	43.0	36.0	24.5	19.0	PT 1/2



Metric Tapered Thread Type

Series	Part Number	Tube O.D	Dimension						
			H	h	L	L1	A	B	T
LL Very Light PN 100	BLK-DME-04LL-M08K	4	10.0	9.0	21.0	17.0	11.0	8.0	M8 x 1.0Keg
	BLK-DME-06LL-M10K	6	12.0	9.0	21.0	17.0	9.5	8.0	M10 x 1.0Keg
	BLK-DME-08LL-M10K	8	14.0	12.0	23.0	20.0	11.5	8.0	M10 x 1.0Keg
L Light PN 315	BLK-DME-06L-M10K	6	14.0	12.0	27.0	20.0	12.0	8.0	M10 x 1.0Keg
	BLK-DME-08L-M12K	8	17.0	12.0	29.0	26.0	14.0	12.0	M12 x 1.5Keg
	BLK-DME-10L-M14K	10	19.0	14.0	30.0	27.0	15.0	12.0	M14 x 1.5Keg
	BLK-DME-12L-M16K	12	22.0	17.0	32.0	28.0	17.0	14.0	M16 x 1.5Keg
	BLK-DME-15L-M18K	15	27.0	19.0	36.0	34.0	21.0	14.0	M18 x 1.5Keg
S Heavy PN 400	BLK-DME-18L-M22K	18	32.0	24.0	40.0	36.0	23.5	17.0	M22 x 1.5Keg
	BLK-DME-06S-M12K	6	17.0	12.0	31.0	26.0	16.0	12.0	M12 x 1.5Keg
	BLK-DME-08S-M14K	8	19.0	14.0	32.0	27.0	17.0	12.0	M14 x 1.5Keg
	BLK-DME-10S-M16K	10	22.0	17.0	34.0	28.0	17.5	12.0	M16 x 1.5Keg
	BLK-DME-12S-M18K	12	24.0	17.0	38.0	28.0	21.5	12.0	M18 x 1.5Keg
	BLK-DME-14S-M20K	14	27.0	19.0	40.0	32.0	22.0	14.0	M20 x 1.5Keg
	BLK-DME-16S-M22K	16	30.0	24.0	43.0	32.0	24.5	17.0	M22 x 1.5Keg

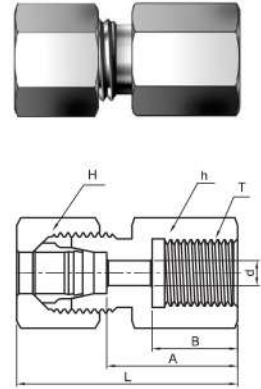
- All dimensions in millimeters unless specified as "inch". Dimension are for reference only, subject to change
- Dimensions given approximate length with tightened nut.

DCF-G/M (BSP Parallel / Metric Parallel)

Female Connector

BSP Parallel Thread Type

Series	Part Number	Tube O.D	Dimension						
			d	H	h	L	A	B	T
L Light PN 315	BLK-DCF-06L-01G	6	4.0	14.0	14.0	34.0	19.0	12.0	PF 1/8
	BLK-DCF-08L-02G	8	6.0	17.0	19.0	39.0	24.0	17.0	PF 1/4
	BLK-DCF-08L-03G	8	6.0	17.0	24.0	40.0	25.0	17.0	PF 3/8
	BLK-DCF-08L-04G	8	6.0	17.0	27.0	44.0	29.0	20.0	PF 1/2
	BLK-DCF-10L-02G	10	8.0	19.0	19.0	40.0	25.0	17.0	PF 1/4
	BLK-DCF-10L-03G	10	8.0	19.0	24.0	41.0	26.0	17.0	PF 3/8
	BLK-DCF-10L-04G	10	8.0	19.0	27.0	45.0	30.0	20.0	PF 1/2
	BLK-DCF-12L-03G	12	10.0	22.0	24.0	41.0	26.0	17.0	PF 3/8
	BLK-DCF-12L-04G	12	10.0	22.0	27.0	45.0	30.0	20.0	PF 1/2
	BLK-DCF-15L-04G	15	12.0	27.0	27.0	46.0	31.0	20.0	PF 1/2
PB 160	BLK-DCF-18L-04G	18	15.0	32.0	27.0	47.0	30.5	20.0	PF 1/2
	BLK-DCF-22L-06G	22	19.0	36.0	36.0	52.0	35.5	22.0	PF 3/4
	BLK-DCF-28L-08G	28	24.0	41.0	41.0	55.0	38.0	24.5	PF 1
	BLK-DCF-35L-10G	35	30.0	50.0	55.0	63.0	41.0	26.5	PF 1 1/4
S Heavy PB 630	BLK-DCF-42L-12G	42	36.0	60.0	60.0	65.0	42.5	28.5	PF 1 1/2
	BLK-DCF-06S-02G	6	4.0	17.0	19.0	41.0	26.0	17.0	PF 1/4
	BLK-DCF-08S-02G	8	5.0	19.0	19.0	41.0	26.0	17.0	PF 1/4
	BLK-DCF-10S-03G	10	7.0	22.0	24.0	43.0	26.5	17.0	PF 3/8
	BLK-DCF-12S-03G	12	8.0	24.0	24.0	43.0	26.5	17.0	PF 3/8
PB 400	BLK-DCF-14S-04G	14	10.0	27.0	30.0	50.0	32.0	20.0	PF 1/2
	BLK-DCF-16S-04G	16	12.0	30.0	30.0	50.0	31.5	20.0	PF 1/2
	BLK-DCF-20S-06G	20	16.0	36.0	36.0	56.0	34.5	22.0	PF 3/4
	BLK-DCF-25S-08G	25	20.0	46.0	41.0	62.0	37.5	24.5	PF 1
PB 315	BLK-DCF-30S-10G	30	25.0	50.0	55.0	69.0	42.0	26.5	PF 1 1/4
	BLK-DCF-38S-12G	38	32.0	60.0	60.0	74.0	43.5	28.5	PF 1 1/2



Metric Parallel Thread Type

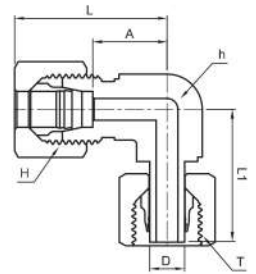
Series	Part Number	Tube O.D	Dimension						
			d	H	h	L	A	B	T
L Light PB 315	BLK-DCF-06L-M10	6	4.0	14.0	14.0	34.0	19.5	12.5	M10 x 1.0
	BLK-DCF-08L-M12	8	6.0	17.0	17.0	39.0	24.0	17.0	M12 x 1.5
	BLK-DCF-10L-M14	10	8.0	19.0	19.0	40.0	25.0	17.0	M14 x 1.5
	BLK-DCF-12L-M16	12	10.0	22.0	22.0	41.0	26.0	17.0	M16 x 1.5
	BLK-DCF-15L-M18	15	12.0	27.0	24.0	43.0	28.0	17.0	M18 x 1.5
	BLK-DCF-18L-M22	18	15.0	32.0	30.0	46.0	29.5	19.0	M22 x 1.5
PB 160	BLK-DCF-22L-M26	22	19.0	36.0	32.0	51.0	34.5	21.0	M26 x 1.5
	BLK-DCF-28L-M33	28	24.0	41.0	41.0	54.0	37.5	24.0	M33 x 2.0
	BLK-DCF-35L-M42	35	30.0	50.0	55.0	62.0	40.5	26.0	M42 x 2.0
	BLK-DCF-42L-M48	42	36.0	60.0	60.0	65.0	42.0	28.0	M48 x 2.0
S Heavy PB 630	BLK-DCF-06S-M12	6	4.0	17.0	17.0	41.0	26.0	17.0	M12 x 1.5
	BLK-DCF-08S-M14	8	5.0	19.0	19.0	41.0	26.0	17.0	M14 x 1.5
	BLK-DCF-10S-M16	10	7.0	22.0	22.0	43.0	26.5	17.0	M16 x 1.5
	BLK-DCF-12S-M18	12	8.0	24.0	24.0	44.0	27.5	17.0	M18 x 1.5
	BLK-DCF-14S-M20	14	10.0	27.0	27.0	49.0	31.0	19.0	M20 x 1.5
PB 400	BLK-DCF-16L-M22	16	12.0	30.0	30.0	49.0	30.5	19.0	M22 x 1.5
	BLK-DCF-20L-M27	20	16.0	36.0	36.0	56.0	34.5	22.0	M27 x 2.0
	BLK-DCF-25L-M33	25	20.0	46.0	41.0	61.0	37.0	24.0	M33 x 2.0
	BLK-DCF-30L-M42	30	25.0	50.0	55.0	68.0	41.5	26.0	M42 x 2.0
PB 315	BLK-DCF-38L-M48	38	32.0	60.0	60.0	74.0	43.0	28.0	M48 x 2.0

• All dimensions in millimeters unless specified as "inch". Dimension are for reference only, subject to change
 • Dimensions given approximate length with tightened nut.

DAE

Adjustable Elbow

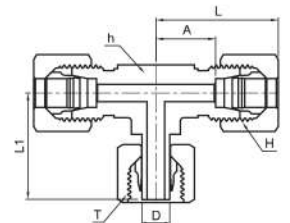
Series	Part Number	Tube O.D	Dimension						
			d	H	h	L	A	B	T
L Light PN 315	BLK-DAE-06L	6	6	14.0	12.0	27.0	26.0	12.0	M12 x 1.5
	BLK-DAE-08L	8	8	17.0	12.0	29.0	27.5	14.0	M14 x 1.5
	BLK-DAE-10L	10	10	19.0	14.0	30.0	29.0	15.0	M16 x 1.5
	BLK-DAE-12L	12	12	22.0	17.0	32.0	29.5	17.0	M18 x 1.5
	BLK-DAE-15L	15	15	27.0	19.0	36.0	32.5	21.0	M22 x 1.5
PN 160	BLK-DAE-18L	18	18	32.0	24.0	40.0	35.5	23.5	M26 x 1.5
	BLK-DAE-22L	22	22	36.0	27.0	44.0	38.5	27.5	M30 x 2.0
	BLK-DAE-28L	28	28	41.0	36.0	47.0	41.5	30.5	M36 x 2.0
	BLK-DAE-35L	35	35	50.0	41.0	56.0	51.0	34.5	M45 x 2.0
S Heavy PN 630	BLK-DAE-42L	42	42	60.0	50.0	63.0	56.0	40.0	M52 x 2.0
	BLK-DAE-06S	6	6	17.0	12.0	31.0	27.0	16.0	M14 x 1.5
	BLK-DAE-08S	8	8	19.0	14.0	32.0	27.5	17.0	M16 x 1.5
	BLK-DAE-10S	10	10	22.0	17.0	34.0	30.0	17.5	M18 x 1.5
	BLK-DAE-12S	12	12	24.0	17.0	38.0	31.0	21.5	M20 x 1.5
PN 400	BLK-DAE-14S	14	14	27.0	19.0	40.0	35.0	22.0	M22 x 1.5
	BLK-DAE-16S	16	16	30.0	24.0	43.0	40.0	24.5	M24 x 1.5
	BLK-DAE-20S	20	20	36.0	27.0	48.0	44.5	26.5	M30 x 2.0
	BLK-DAE-25S	25	25	46.0	36.0	54.0	50.0	30.0	M36 x 2.0
PN 315	BLK-DAE-30S	30	30	50.0	41.0	62.0	55.0	35.5	M42 x 2.0
	BLK-DAE-38S	38	38	60.0	50.0	72.0	63.0	41.0	M52 x 2.0



DABT

Adjustable Branch Tee

Series	Part Number	Tube O.D	Dimension						
			d	H	h	L	A	B	T
L Light PN 315	BLK-DABT-06L	6	6	14.0	12.0	27.0	26.0	12.0	M12 x 1.5
	BLK-DABT-08L	8	8	17.0	12.0	29.0	27.5	14.0	M14 x 1.5
	BLK-DABT-10L	10	10	19.0	14.0	30.0	29.0	15.0	M16 x 1.5
	BLK-DABT-12L	12	12	22.0	17.0	32.0	29.5	17.0	M18 x 1.5
	BLK-DABT-15L	15	15	27.0	19.0	36.0	32.5	21.0	M22 x 1.5
PN 160	BLK-DABT-18L	18	18	32.0	24.0	40.0	35.5	23.5	M26 x 1.5
	BLK-DABT-22L	22	22	36.0	27.0	44.0	38.5	27.5	M30 x 2.0
	BLK-DABT-28L	28	28	41.0	36.0	47.0	41.5	30.5	M36 x 2.0
	BLK-DABT-35L	35	35	50.0	41.0	56.0	51.0	34.5	M45 x 2.0
S Heavy PN 630	BLK-DABT-42L	42	42	60.0	50.0	63.0	56.0	40.0	M52 x 2.0
	BLK-DABT-06S	6	6	17.0	12.0	31.0	27.0	16.0	M14 x 1.5
	BLK-DABT-08S	8	8	19.0	14.0	32.0	27.5	17.0	M16 x 1.5
	BLK-DABT-10S	10	10	22.0	17.0	34.0	30.0	17.5	M18 x 1.5
	BLK-DABT-12S	12	12	24.0	17.0	38.0	31.0	21.5	M20 x 1.5
PN 400	BLK-DABT-14S	14	14	27.0	19.0	40.0	35.0	22.0	M22 x 1.5
	BLK-DABT-16S	16	16	30.0	24.0	43.0	40.0	24.5	M24 x 1.5
	BLK-DABT-20S	20	20	36.0	27.0	48.0	44.5	26.5	M30 x 2.0
	BLK-DABT-25S	25	25	46.0	36.0	54.0	50.0	30.0	M36 x 2.0
PN 315	BLK-DABT-30S	30	30	50.0	41.0	62.0	55.0	35.5	M42 x 2.0
	BLK-DABT-38S	38	38	60.0	50.0	72.0	63.0	41.0	M52 x 2.0

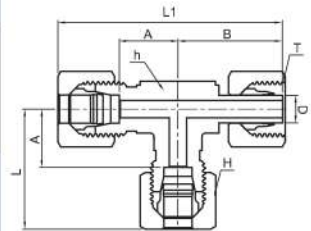


• All dimensions in millimeters unless specified as "inch". Dimension are for reference only, subject to change
 • Dimensions given approximate length with tightened nut.

DART

Adjustable Run Tee

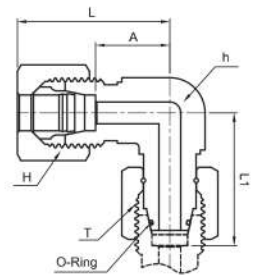
Series	Part Number	Tube O.D	Dimension							
			d	H	h	L	L1	A	B	T
L Light PN 315	BLK-DART-06L	6	6	14.0	12.0	27.0	53.0	12.0	26.0	M12 x 1.5
	BLK-DART-08L	8	8	17.0	12.0	29.0	56.0	14.0	27.5	M14 x 1.5
	BLK-DART-10L	10	10	19.0	14.0	30.0	59.0	15.0	29.0	M16 x 1.5
	BLK-DART-12L	12	12	22.0	17.0	32.0	62.0	17.0	29.5	M18 x 1.5
	BLK-DART-15L	15	15	27.0	19.0	36.0	69.0	21.0	32.5	M22 x 1.5
PN 160	BLK-DART-18L	18	18	32.0	24.0	40.0	75.0	23.5	35.5	M26 x 1.5
	BLK-DART-22L	22	22	36.0	27.0	44.0	83.0	27.5	38.5	M30 x 2.0
	BLK-DART-28L	28	28	41.0	36.0	47.0	91.0	30.5	41.5	M36 x 2.0
	BLK-DART-35L	35	35	50.0	41.0	56.0	111.0	34.5	51.0	M45 x 2.0
S Heavy PN 630	BLK-DART-42L	42	42	60.0	50.0	63.0	123.0	40.0	56.0	M52 x 2.0
	BLK-DART-06S	6	6	17.0	12.0	31.0	58.0	16.0	27.0	M14 x 1.5
	BLK-DART-08S	8	8	19.0	14.0	32.0	61.0	17.0	27.5	M16 x 1.5
	BLK-DART-10S	10	10	22.0	17.0	34.0	66.0	17.5	30.0	M18 x 1.5
PN 400	BLK-DART-12S	12	12	24.0	17.0	38.0	71.0	21.5	31.0	M20 x 1.5
	BLK-DART-14S	14	14	27.0	19.0	40.0	75.0	22.0	35.0	M22 x 1.5
	BLK-DART-16S	16	16	30.0	24.0	43.0	79.0	24.5	40.0	M24 x 1.5
	BLK-DART-20S	20	20	36.0	27.0	48.0	93.0	26.5	44.5	M30 x 2.0
PN 315	BLK-DART-25S	25	25	46.0	36.0	54.0	105.0	30.0	50.0	M36 x 2.0
	BLK-DART-30S	30	30	50.0	41.0	62.0	119.0	35.5	55.0	M42 x 2.0
PN 315	BLK-DART-38S	38	38	60.0	50.0	72.0	138.0	41.0	63.0	M52 x 2.0



DSE

Swivel Adjustable Elbow

Series	Part Number	Tube O.D	Dimension					T
			H	h	L	L1	A	
L Light PN 315	BLK-DSE-06L	6	14.0	12.0	27.0	26.0	12.0	M12 x 1.5
	BLK-DSE-08L	8	17.0	12.0	29.0	27.5	14.0	M14 x 1.5
	BLK-DSE-10L	10	19.0	14.0	30.0	29.0	15.0	M16 x 1.5
	BLK-DSE-12L	12	22.0	17.0	32.0	29.5	17.0	M18 x 1.5
	BLK-DSE-15L	15	27.0	19.0	36.0	32.5	21.0	M22 x 1.5
PN 160	BLK-DSE-18L	18	32.0	24.0	40.0	35.5	23.5	M26 x 1.5
	BLK-DSE-22L	22	36.0	27.0	44.0	38.5	27.5	M30 x 2.0
	BLK-DSE-28L	28	41.0	36.0	47.0	41.5	30.5	M36 x 2.0
	BLK-DSE-35L	35	50.0	41.0	56.0	51.0	34.5	M45 x 2.0
S Heavy PN 630	BLK-DSE-42L	42	60.0	50.0	63.0	56.0	40.0	M52 x 2.0
	BLK-DSE-06S	6	17.0	12.0	31.0	27.0	16.0	M14 x 1.5
	BLK-DSE-08S	8	19.0	14.0	32.0	27.5	17.0	M16 x 1.5
	BLK-DSE-10S	10	22.0	17.0	34.0	30.0	17.5	M18 x 1.5
PN 400	BLK-DSE-12S	12	24.0	17.0	38.0	31.0	21.5	M20 x 1.5
	BLK-DSE-14S	14	27.0	19.0	40.0	35.0	22.0	M22 x 1.5
	BLK-DSE-16S	16	30.0	24.0	43.0	36.5	24.5	M24 x 1.5
	BLK-DSE-20S	20	36.0	27.0	48.0	44.5	26.5	M30 x 2.0
PN 315	BLK-DSE-25S	25	46.0	36.0	54.0	50.0	30.0	M36 x 2.0
	BLK-DSE-30S	30	50.0	41.0	62.0	55.0	35.5	M42 x 2.0
PN 315	BLK-DSE-38S	38	60.0	50.0	72.0	63.0	41.0	M52 x 2.0

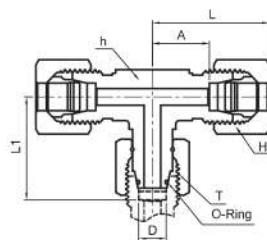


- All dimensions in millimeters unless specified as "inch". Dimension are for reference only, subject to change
- Dimensions given approximate length with tightened nut.

DSBT

Swivel Adjustable Branch Tee

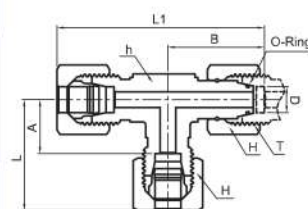
Series	Part Number	Tube O.D	Dimension					
			H	h	L	L1	A	T
L Light PN 315	BLK-DSBT-06L	6	14.0	12.0	27.0	26.0	12.0	M12 x 1.5
	BLK-DSBT-08L	8	17.0	12.0	29.0	27.5	14.0	M14 x 1.5
	BLK-DSBT-10L	10	19.0	14.0	30.0	29.0	15.0	M16 x 1.5
	BLK-DSBT-12L	12	22.0	17.0	32.0	29.5	17.0	M18 x 1.5
	BLK-DSBT-15L	15	27.0	19.0	36.0	32.5	21.0	M22 x 1.5
PN 160	BLK-DSBT-18L	18	32.0	24.0	40.0	35.5	23.5	M26 x 1.5
	BLK-DSBT-22L	22	36.0	27.0	44.0	38.5	27.5	M30 x 2.0
	BLK-DSBT-28L	28	41.0	36.0	47.0	41.5	30.5	M36 x 2.0
	BLK-DSBT-35L	35	50.0	41.0	56.0	51.0	34.5	M45 x 2.0
S Heavy PN 630	BLK-DSBT-42L	42	60.0	50.0	63.0	56.0	40.0	M52 x 2.0
	BLK-DSBT-06S	6	17.0	12.0	31.0	27.0	16.0	M14 x 1.5
	BLK-DSBT-08S	8	19.0	14.0	32.0	27.5	17.0	M16 x 1.5
	BLK-DSBT-10S	10	22.0	17.0	34.0	30.0	17.5	M18 x 1.5
	BLK-DSBT-12S	12	24.0	17.0	38.0	31.0	21.5	M20 x 1.5
PN 400	BLK-DSBT-14S	14	27.0	19.0	40.0	35.0	22.0	M22 x 1.5
	BLK-DSBT-16S	16	30.0	24.0	43.0	36.5	24.5	M24 x 1.5
	BLK-DSBT-20S	20	36.0	27.0	48.0	44.5	26.5	M30 x 2.0
	BLK-DSBT-25S	25	46.0	36.0	54.0	50.0	30.0	M36 x 2.0
PN 315	BLK-DSBT-30S	30	50.0	41.0	62.0	55.0	35.5	M42 x 2.0
	BLK-DSBT-38S	38	60.0	50.0	72.0	63.0	41.0	M52 x 2.0



DSRT

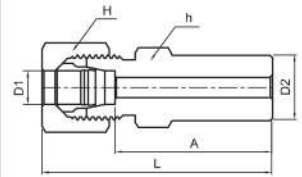
Swivel Adjustable Run Tee

Series	Part Number	Tube O.D	Dimension						
			H	h	L	L1	A	B	T
L Light PN 315	BLK-DSRT-06L	6	14.0	12.0	27.0	53.0	12.0	26.0	M12 x 1.5
	BLK-DSRT-08L	8	17.0	12.0	29.0	56.0	14.0	27.5	M14 x 1.5
	BLK-DSRT-10L	10	19.0	14.0	30.0	59.0	15.0	29.0	M16 x 1.5
	BLK-DSRT-12L	12	22.0	17.0	32.0	61.0	17.0	29.5	M18 x 1.5
	BLK-DSRT-15L	15	27.0	19.0	36.0	69.0	21.0	32.5	M22 x 1.5
PN 160	BLK-DSRT-18L	18	32.0	24.0	40.0	75.0	23.5	35.5	M26 x 1.5
	BLK-DSRT-22L	22	36.0	27.0	44.0	82.0	27.5	38.5	M30 x 2.0
	BLK-DSRT-28L	28	41.0	36.0	47.0	89.0	30.5	41.5	M36 x 2.0
	BLK-DSRT-35L	35	50.0	41.0	56.0	107.0	34.5	51.0	M45 x 2.0
S Heavy PN 630	BLK-DSRT-42L	42	60.0	50.0	63.0	119.0	40.0	56.0	M52 x 2.0
	BLK-DSRT-06S	6	17.0	12.0	31.0	58.0	16.0	27.0	M14 x 1.5
	BLK-DSRT-08S	8	19.0	14.0	32.0	59.0	17.0	27.5	M16 x 1.5
	BLK-DSRT-10S	10	22.0	17.0	34.0	64.0	17.5	30.0	M18 x 1.5
	BLK-DSRT-12S	12	24.0	17.0	38.0	69.0	21.5	31.0	M20 x 1.5
PN 400	BLK-DSRT-14S	14	27.0	19.0	40.0	75.0	22.0	35.0	M22 x 1.5
	BLK-DSRT-16S	16	30.0	24.0	43.0	79.0	24.5	36.5	M24 x 1.5
	BLK-DSRT-20S	20	36.0	27.0	48.0	93.0	26.5	44.5	M30 x 2.0
	BLK-DSRT-25S	25	46.0	36.0	54.0	104.0	30.0	50.0	M36 x 2.0
PN 315	BLK-DSRT-30S	30	50.0	41.0	62.0	117.0	35.5	55.0	M42 x 2.0
	BLK-DSRT-38S	38	60.0	50.0	72.0	135.0	41.0	63.0	M52 x 2.0



- All dimensions in millimeters unless specified as "inch". Dimension are for reference only, subject to change
- Dimensions given approximate length with tightened nut.

Series	Part Number	Tube O.D		Dimension			
		D1	D2	H	h	L	A
L Light PN 315	BLK-DRD-06L-08L	6	8	14.0	12.0	40.0	25.5
	BLK-DRD-06L-10L	6	10	14.0	12.0	42.0	27.5
	BLK-DRD-08L-10L	8	10	17.0	14.0	43.0	27.5
	BLK-DRD-06L-12L	6	12	14.0	14.0	42.0	27.5
	BLK-DRD-08L-12L	8	12	17.0	14.0	43.0	27.5
	BLK-DRD-10L-12L	10	12	19.0	17.0	44.0	28.5
	BLK-DRD-06L-15L	6	15	14.0	19.0	44.0	29.0
	BLK-DRD-08L-15L	8	15	17.0	19.0	44.0	29.0
	BLK-DRD-10L-15L	10	15	19.0	19.0	45.0	30.0
	BLK-DRD-12L-15L	12	15	22.0	19.0	45.0	30.0
	BLK-DRD-06L-18L	6	18	14.0	19.0	46.0	31.0
	BLK-DRD-08L-18L	8	18	17.0	19.0	46.0	31.0
	BLK-DRD-10L-18L	10	18	19.0	19.0	47.0	32.0
	BLK-DRD-12L-18L	12	18	22.0	19.0	47.0	32.0
BLK-DRD-15L-18L	15	18	27.0	22.0	49.0	33.0	
PN 160	BLK-DRD-06L-22L	6	22	14.0	24.0	48.0	33.0
	BLK-DRD-08L-22L	8	22	17.0	24.0	48.0	33.0
	BLK-DRD-10L-22L	10	22	19.0	24.0	49.0	34.0
	BLK-DRD-12L-22L	12	22	22.0	24.0	49.0	34.0
	BLK-DRD-15L-22L	15	22	27.0	24.0	50.0	35.0
	BLK-DRD-18L-22L	18	22	32.0	27.0	51.0	34.5
	BLK-DRD-06L-28L	6	28	14.0	30.0	48.0	33.0
	BLK-DRD-08L-28L	8	28	17.0	30.0	48.0	33.0
	BLK-DRD-10L-28L	10	28	19.0	30.0	49.0	34.0
	BLK-DRD-12L-28L	12	28	22.0	30.0	49.0	34.0
	BLK-DRD-15L-28L	15	28	27.0	30.0	50.0	35.0
	BLK-DRD-18L-28L	18	28	32.0	30.0	51.0	36.0
	BLK-DRD-22L-28L	22	28	36.0	32.0	53.0	36.5
	BLK-DRD-06L-35L	6	35	14.0	36.0	53.0	38.5
	BLK-DRD-08L-35L	8	35	17.0	36.0	53.0	38.5
	BLK-DRD-10L-35L	10	35	19.0	36.0	55.0	39.5
	BLK-DRD-12L-35L	12	35	22.0	36.0	55.0	39.5
	BLK-DRD-15L-35L	15	35	27.0	36.0	56.0	40.5
	BLK-DRD-18L-35L	18	35	32.0	36.0	56.0	40.0
	BLK-DRD-22L-35L	22	35	36.0	36.0	58.0	42.0
	BLK-DRD-28L-35L	28	35	41.0	36.0	59.0	42.0
	BLK-DRD-06L-42L	6	42	14.0	46.0	56.0	41.0
	BLK-DRD-08L-42L	8	42	17.0	46.0	56.0	41.0
	BLK-DRD-10L-42L	10	42	19.0	46.0	58.0	42.0
	BLK-DRD-12L-42L	12	42	22.0	46.0	58.0	42.0
	BLK-DRD-15L-42L	15	42	27.0	46.0	60.0	43.0
	BLK-DRD-18L-42L	18	42	32.0	46.0	60.0	42.5
	BLK-DRD-22L-42L	22	42	36.0	46.0	62.0	44.5
BLK-DRD-28L-42L	28	42	41.0	46.0	64.0	44.5	
BLK-DRD-35L-42L	35	42	50.0	46.0	67.0	43.5	

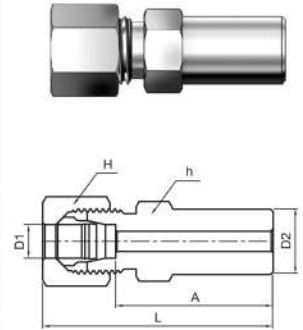


• All dimensions in millimeters unless specified as "inch". Dimension are for reference only, subject to change.

• Dimensions given approximate length with tightened nut.

Reducer

Series	Part Number	Tube O.D		Dimension			
		D1	D2	H	h	L	A
S Heavy PN 630	BLK-DRD-06S-08S	6	8	17.0	14.0	43.0	28.0
	BLK-DRD-06S-10S	6	10	17.0	14.0	45.0	30.5
	BLK-DRD-08S-10S	8	10	19.0	17.0	45.0	30.5
	BLK-DRD-06S-12S	6	12	17.0	14.0	47.0	32.5
	BLK-DRD-08S-12S	8	12	19.0	17.0	47.0	32.5
	BLK-DRD-10S-12S	10	12	22.0	19.0	48.0	32.0
	BLK-DRD-06S-14S	6	14	17.0	17.0	51.0	36.5
	BLK-DRD-08S-14S	8	14	19.0	17.0	51.0	36.5
	BLK-DRD-10S-14S	10	14	22.0	19.0	52.0	36.0
	BLK-DRD-12S-14S	12	14	24.0	22.0	52.0	36.0
	BLK-DRD-06S-16S	6	16	17.0	17.0	53.0	38.5
	BLK-DRD-08S-16S	8	16	19.0	17.0	53.0	38.5
	BLK-DRD-10S-16S	10	16	22.0	19.0	54.0	38.0
	BLK-DRD-12S-16S	12	16	24.0	22.0	55.0	38.5
BLK-DRD-14S-16S	14	16	27.0	22.0	57.0	39.5	
PN 400	BLK-DRD-06S-20S	6	20	17.0	22.0	58.0	43.0
	BLK-DRD-08S-20S	8	20	19.0	22.0	58.0	43.0
	BLK-DRD-10S-20S	10	20	22.0	22.0	59.0	42.5
	BLK-DRD-12S-20S	12	20	24.0	22.0	59.0	42.5
	BLK-DRD-14S-20S	14	20	27.0	22.0	62.0	44.0
	BLK-DRD-16S-25S	16	20	30.0	24.0	62.0	43.5
	BLK-DRD-06S-25S	6	25	17.0	27.0	62.0	47.5
	BLK-DRD-08S-25S	8	25	19.0	27.0	62.0	47.5
	BLK-DRD-10S-25S	10	25	22.0	27.0	63.0	47.0
	BLK-DRD-12S-25S	12	25	24.0	27.0	63.0	47.0
	BLK-DRD-14S-25S	14	25	27.0	27.0	66.0	48.5
	BLK-DRD-16S-25S	16	25	30.0	27.0	66.0	48.0
	BLK-DRD-20S-25S	20	25	36.0	30.0	70.0	48.0
	BLK-DRD-06S-30S	6	30	17.0	32.0	67.0	52.0
	BLK-DRD-08S-30S	8	30	19.0	32.0	67.0	52.0
	BLK-DRD-10S-30S	10	30	22.0	32.0	68.0	51.5
	BLK-DRD-12S-30S	12	30	24.0	32.0	68.0	51.5
	BLK-DRD-14S-30S	14	30	27.0	32.0	71.0	53.0
	BLK-DRD-16S-30S	16	30	30.0	32.0	71.0	52.5
	BLK-DRD-20S-30S	20	30	36.0	32.0	74.0	52.5
BLK-DRD-25S-30S	25	30	46.0	36.0	77.0	53.0	
PN 315	BLK-DRD-06S-38S	6	38	17.0	41.0	72.0	57.0
	BLK-DRD-08S-38S	8	38	19.0	41.0	72.0	57.0
	BLK-DRD-10S-38S	10	38	22.0	41.0	73.0	56.5
	BLK-DRD-12S-38S	12	38	24.0	41.0	73.0	56.5
	BLK-DRD-14S-38S	14	38	27.0	41.0	76.0	58.0
	BLK-DRD-16S-38S	16	38	30.0	41.0	76.0	57.5
	BLK-DRD-20S-38S	20	38	36.0	41.0	79.0	57.5
	BLK-DRD-25S-38S	25	38	46.0	41.0	82.0	58.0
BLK-DRD-30S-38S	30	38	50.0	46.0	89.0	58.5	

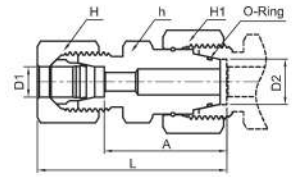


- All dimensions in millimeters unless specified as "inch". Dimension are for reference only, subject to change
- Dimensions given approximate length with tightened nut.

DSRAP

Swivel Reducing Adaptor

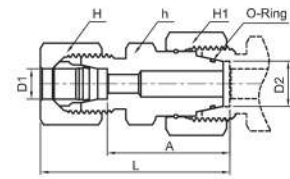
Series	Part Number	Tube O.D		Dimension				
		D1	D2	H1	H	h	L	A
L Light PN 315	BLK-DSRAP-06L-08L	6	8	17.0	14.0	14.0	39.0	24.5
	BLK-DSRAP-06L-10L	6	10	19.0	14.0	17.0	39.5	24.5
	BLK-DSRAP-08L-10L	8	10	19.0	17.0	17.0	39.5	24.5
	BLK-DSRAP-06L-12L	6	12	22.0	14.0	17.0	40.0	25.0
	BLK-DSRAP-08L-12L	8	12	22.0	17.0	17.0	40.0	25.0
	BLK-DSRAP-10L-12L	10	12	22.0	19.0	17.0	41.0	26.0
	BLK-DSRAP-06L-15L	6	15	27.0	14.0	22.0	42.0	27.5
	BLK-DSRAP-08L-15L	8	15	27.0	17.0	22.0	42.0	27.5
	BLK-DSRAP-10L-15L	10	15	27.0	19.0	22.0	43.0	28.5
	BLK-DSRAP-12L-15L	12	15	27.0	22.0	22.0	43.0	28.5
	BLK-DSRAP-06L-18L	6	18	32.0	14.0	25.0	43.0	28.0
	BLK-DSRAP-08L-18L	8	18	32.0	17.0	25.0	43.0	28.0
	BLK-DSRAP-10L-18L	10	18	32.0	19.0	25.0	44.5	29.5
	BLK-DSRAP-12L-18L	12	18	32.0	22.0	25.0	44.5	29.5
	BLK-DSRAP-15L-18L	15	18	32.0	27.0	25.0	45.5	30.5
PN 160	BLK-DSRAP-06L-22L	6	22	36.0	14.0	28.5	47.0	32.0
	BLK-DSRAP-08L-22L	8	22	36.0	17.0	28.5	47.0	32.0
	BLK-DSRAP-10L-22L	10	22	36.0	19.0	28.5	48.0	33.0
	BLK-DSRAP-12L-22L	12	22	36.0	22.0	28.5	48.0	33.0
	BLK-DSRAP-15L-22L	15	22	36.0	27.0	28.5	49.0	34.0
	BLK-DSRAP-18L-22L	18	22	36.0	32.0	28.5	50.0	33.5
	BLK-DSRAP-06L-28L	6	28	41.0	14.0	36.0	49.0	34.0
	BLK-DSRAP-08L-28L	8	28	41.0	17.0	36.0	49.0	34.0
	BLK-DSRAP-10L-28L	10	28	41.0	19.0	36.0	50.0	35.0
	BLK-DSRAP-12L-28L	12	28	41.0	22.0	36.0	50.0	35.0
	BLK-DSRAP-15L-28L	15	28	41.0	27.0	36.0	51.0	36.0
	BLK-DSRAP-18L-28L	18	28	41.0	32.0	36.0	52.0	35.5
	BLK-DSRAP-22L-28L	22	28	41.0	36.0	36.0	54.0	37.5
	BLK-DSRAP-06L-35L	6	35	50.0	14.0	46.0	55.0	40.0
	BLK-DSRAP-08L-35L	8	35	50.0	17.0	46.0	55.0	40.0
	BLK-DSRAP-10L-35L	10	35	50.0	19.0	46.0	56.0	41.0
	BLK-DSRAP-12L-35L	12	35	50.0	22.0	46.0	56.0	41.0
	BLK-DSRAP-15L-35L	15	35	50.0	27.0	46.0	57.0	42.0
	BLK-DSRAP-18L-35L	18	35	50.0	32.0	46.0	58.0	41.5
	BLK-DSRAP-22L-35L	22	35	50.0	36.0	46.0	60.0	43.5
	BLK-DSRAP-28L-35L	28	35	50.0	41.0	46.0	60.0	43.5
	BLK-DSRAP-06L-42L	6	42	60.0	14.0	50.0	55.0	40.5
	BLK-DSRAP-08L-42L	8	42	60.0	17.0	50.0	55.0	40.5
	BLK-DSRAP-10L-42L	10	42	60.0	19.0	50.0	56.0	41.5
	BLK-DSRAP-12L-42L	12	42	60.0	22.0	50.0	56.0	41.5
	BLK-DSRAP-15L-42L	15	42	60.0	27.0	50.0	58.0	42.5
	BLK-DSRAP-18L-42L	18	42	60.0	32.0	50.0	58.0	42.0
	BLK-DSRAP-22L-42L	22	42	60.0	36.0	50.0	60.0	44.0
	BLK-DSRAP-28L-42L	28	42	60.0	41.0	50.0	61.0	44.0
	BLK-DSRAP-35L-42L	35	42	60.0	50.0	50.0	65.0	43.0



- All dimensions in millimeters unless specified as "inch". Dimension are for reference only, subject to change
- Dimensions given approximate length with tightened nut.

Swivel Reducing Adaptor

Series	Part Number	Tube O.D		Dimension				
		D1	D2	H1	H	h	L	A
S Heavy PN 630	BLK-DSRAP-06S-08S	6	8	19.0	17.0	17.0	44.0	28.0
	BLK-DSRAP-06S-10S	6	10	22.0	17.0	17.0	44.0	29.5
	BLK-DSRAP-08S-10S	8	10	22.0	19.0	17.0	44.0	29.5
	BLK-DSRAP-06S-12S	6	12	24.0	17.0	19.0	45.0	30.0
	BLK-DSRAP-08S-12S	8	12	24.0	19.0	19.0	45.0	30.0
	BLK-DSRAP-10S-12S	10	12	24.0	22.0	19.0	46.0	29.5
	BLK-DSRAP-06S-14S	6	14	27.0	17.0	22.0	47.5	33.0
	BLK-DSRAP-08S-14S	8	14	27.0	19.0	22.0	47.5	33.0
	BLK-DSRAP-10S-14S	10	14	27.0	22.0	22.0	48.5	32.5
	BLK-DSRAP-12S-14S	12	14	27.0	24.0	22.0	48.5	32.5
	BLK-DSRAP-06S-16S	6	16	30.0	17.0	24.0	50.0	35.0
	BLK-DSRAP-08S-16S	8	16	30.0	19.0	24.0	50.0	35.0
	BLK-DSRAP-10S-16S	10	16	30.0	22.0	24.0	51.0	34.5
	BLK-DSRAP-12S-16S	12	16	30.0	24.0	24.0	51.0	34.5
BLK-DSRAP-14S-16S	14	16	30.0	27.0	24.0	54.0	36.0	
PN 400	BLK-DSRAP-06S-20S	6	20	36.0	17.0	28.5	54.0	39.0
	BLK-DSRAP-08S-20S	8	20	36.0	19.0	28.5	54.0	39.0
	BLK-DSRAP-10S-20S	10	20	36.0	22.0	28.5	55.0	38.5
	BLK-DSRAP-12S-20S	12	20	36.0	24.0	28.5	55.0	38.5
	BLK-DSRAP-14S-20S	14	20	36.0	27.0	28.5	58.0	40.0
	BLK-DSRAP-16S-20S	16	20	36.0	30.0	28.5	58.0	39.5
	BLK-DSRAP-06S-25S	6	25	46.0	17.0	36.0	58.0	43.5
	BLK-DSRAP-08S-25S	8	25	46.0	19.0	36.0	58.0	43.5
	BLK-DSRAP-10S-25S	10	25	46.0	22.0	36.0	59.0	43.0
	BLK-DSRAP-12S-25S	12	25	46.0	24.0	36.0	59.0	43.0
	BLK-DSRAP-14S-25S	14	25	46.0	27.0	36.0	62.0	44.5
	BLK-DSRAP-16S-25S	16	25	46.0	30.0	36.0	62.0	44.0
	BLK-DSRAP-20S-25S	20	25	46.0	36.0	36.0	66.0	44.0
	BLK-DSRAP-06S-30S	6	30	50.0	17.0	41.0	66.0	51.0
	BLK-DSRAP-08S-30S	8	30	50.0	19.0	41.0	66.0	51.0
	BLK-DSRAP-10S-30S	10	30	50.0	22.0	41.0	67.0	50.5
	BLK-DSRAP-12S-30S	12	30	50.0	24.0	41.0	67.0	50.5
	BLK-DSRAP-14S-30S	14	30	50.0	27.0	41.0	70.0	52.0
	BLK-DSRAP-16S-30S	16	30	50.0	30.0	41.0	70.0	51.5
	BLK-DSRAP-20S-30S	20	30	50.0	36.0	41.0	73.0	51.5
BLK-DSRAP-25S-30S	25	30	50.0	46.0	41.0	76.0	52.0	
PN 315	BLK-DSRAP-06S-38S	6	38	60.0	17.0	50.0	70.5	56.0
	BLK-DSRAP-08S-38S	8	38	60.0	19.0	50.0	70.5	56.0
	BLK-DSRAP-10S-38S	10	38	60.0	22.0	50.0	71.5	55.5
	BLK-DSRAP-12S-38S	12	38	60.0	24.0	50.0	71.5	55.5
	BLK-DSRAP-14S-38S	14	38	60.0	27.0	50.0	74.5	57.0
	BLK-DSRAP-16S-38S	16	38	60.0	30.0	50.0	74.5	56.5
	BLK-DSRAP-20S-38S	20	38	60.0	36.0	50.0	78.5	56.5
	BLK-DSRAP-25S-38S	25	38	60.0	46.0	50.0	81.5	57.0
BLK-DSRAP-30S-38S	30	38	60.0	50.0	50.0	85.5	58.5	



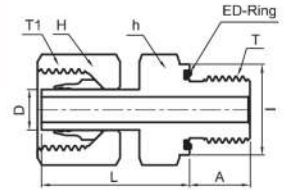
- All dimensions in millimeters unless specified as "inch". Dimension are for reference only, subject to change
- Dimensions given approximate length with tightened nut.

DAP-GED/MED (BSP Parallel/Metric Parallel with ED-Ring)

Adaptor

BSP Parallel Thread Type

Series	Part Number	Tube O.D	Dimension						
			H	h	I	L	A	T	T1
L Light PN315	BLK-DAP-06L-01GED	6	14.0	14.0	14.0	24.5	8.0	PF 1/8	M12 x 1.5
	BLK-DAP-08L-02GED	8	17.0	19.0	19.0	29.5	12.0	PF 1/4	M14 x 1.5
	BLK-DAP-10L-02GED	10	19.0	19.0	19.0	27.5	12.0	PF 1/4	M16 x 1.5
	BLK-DAP-12L-03GED	12	22.0	22.0	22.0	34.0	12.0	PF 3/8	M18 x 1.5
	BLK-DAP-15L-04GED	15	27.0	27.0	27.0	32.0	14.0	PF 1/2	M22 x 1.5
PN 160	BLK-DAP-18L-04GED	18	32.0	27.0	27.0	31.5	14.0	PF 1/2	M26 x 1.5
	BLK-DAP-22L-06GED	22	36.0	32.0	32.0	32.5	16.0	PF 3/4	M30 x 2.0
	BLK-DAP-28L-08GED	28	41.0	41.0	40.0	35.0	18.0	PF 1	M36 x 2.0
	BLK-DAP-35L-10GED	35	50.0	50.0	50.0	42.5	20.0	PF 1 1/4	M45 x 2.0
S Heavy PB 630	BLK-DAP-42L-12GED	42	60.0	55.0	55.0	46.5	22.0	PF 1 1/2	M52 x 2.0
	BLK-DAP-06S-02GED	6	17.0	19.0	19.0	27.0	12.0	PF 1/4	M14 x 1.5
	BLK-DAP-08S-02GED	8	19.0	19.0	19.0	29.5	12.0	PF 1/4	M16 x 1.5
	BLK-DAP-10S-03GED	10	22.0	22.0	22.0	32.0	12.0	PF 3/8	M18 x 1.5
	BLK-DAP-12S-03GED	12	24.0	22.0	22.0	34.0	12.0	PF 3/8	M20 x 1.5
PN 400	BLK-DAP-12S-04GED	12	24.0	27.0	27.0	34.5	14.0	PF 1/2	M20 x 1.5
	BLK-DAP-14S-04GED	14	27.0	27.0	27.0	36.5	14.0	PF 1/2	M22 x 1.5
	BLK-DAP-16S-04GED	16	30.0	27.0	27.0	37.0	14.0	PF 1/2	M24 x 1.5
	BLK-DAP-16S-06GED	16	30.0	32.0	32.0	39.0	16.0	PF 3/4	M24 x 1.5
PN 315	BLK-DAP-20S-06GED	20	36.0	32.0	32.0	43.0	16.0	PF 3/4	M30 x 2.0
	BLK-DAP-25S-08GED	25	46.0	41.0	40.0	48.0	18.0	PF 1	M36 x 2.0
	BLK-DAP-30S-10GED	30	50.0	50.0	50.0	51.0	20.0	PF 1 1/4	M42 x 2.0
PN 315	BLK-DAP-38S-12GED	38	60.0	55.0	55.0	60.0	22.0	PF 1 1/2	M52 x 2.0



Metric Parallel Thread Type

Series	Part Number	Tube O.D	Dimension						
			H	h	I	L	A	T	T1
L Light PN315	BLK-DAP-06L-M10ED	6	14.0	14.0	14.0	24.5	8.0	M10 x 1.0	M12 x 1.5
	BLK-DAP-08L-M12ED	8	17.0	17.0	17.0	26.5	12.0	M12 x 1.5	M14 x 1.5
	BLK-DAP-10L-M14ED	10	19.0	19.0	19.0	27.5	12.0	M14 x 1.5	M16 x 1.5
	BLK-DAP-12L-M16ED	12	22.0	22.0	22.0	30.5	12.0	M16 x 1.5	M18 x 1.5
	BLK-DAP-15L-M18ED	15	27.0	24.0	24.0	31.5	14.0	M18 x 1.5	M22 x 1.5
PN 160	BLK-DAP-18L-M22ED	18	32.0	27.0	27.0	31.5	14.0	M22 x 1.5	M26 x 1.5
	BLK-DAP-22L-M26ED	22	36.0	32.0	32.0	32.5	16.0	M26 x 1.5	M30 x 2.0
	BLK-DAP-28L-M33ED	28	41.0	41.0	40.0	35.0	18.0	M33 x 2.0	M36 x 2.0
	BLK-DAP-35L-M42ED	35	50.0	50.0	50.0	42.5	20.0	M42 x 2.0	M45 x 2.0
S Heavy PB 630	BLK-DAP-42L-M48ED	42	60.0	55.0	55.0	46.5	22.0	M48 x 2.0	M52 x 2.0
	BLK-DAP-06S-M12ED	6	17.0	17.0	17.0	27.0	12.0	M12 x 1.5	M14 x 1.5
	BLK-DAP-08S-M14ED	8	19.0	19.0	19.0	29.5	12.0	M14 x 1.5	M16 x 1.5
	BLK-DAP-10S-M16ED	10	22.0	22.0	22.0	32.0	12.0	M16 x 1.5	M18 x 1.5
	BLK-DAP-12S-M18ED	12	24.0	24.0	24.0	34.0	12.0	M18 x 1.5	M20 x 1.5
PN 400	BLK-DAP-14S-M20ED	14	27.0	27.0	27.0	36.5	14.0	M20 x 1.5	M22 x 1.5
	BLK-DAP-16S-M22ED	16	30.0	27.0	27.0	37.0	14.0	M22 x 1.5	M24 x 1.5
	BLK-DAP-20S-M27ED	20	36.0	32.0	32.0	43.0	16.0	M27 x 2.0	M30 x 2.0
	BLK-DAP-25S-M33ED	25	46.0	41.0	40.0	48.0	18.0	M33 x 2.0	M36 x 2.0
PN 315	BLK-DAP-30S-M42ED	30	50.0	50.0	50.0	51.0	20.0	M42 x 2.0	M42 x 2.0
	BLK-DAP-38S-M48ED	38	60.0	55.0	55.0	60.0	22.0	M48 x 2.0	M52 x 2.0

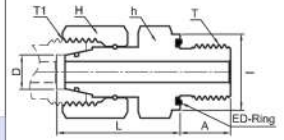
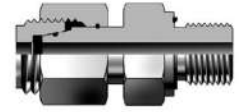
- All dimensions in millimeters unless specified as "inch". Dimension are for reference only, subject to change
- Dimensions given approximate length with tightened nut.

DSAP-GED/MED (BSP Parallel/Metric Parallel with ED-Ring)

Swivel Adaptor

BSP Parallel Thread Type

Series	Part Number	Tube O.D	Dimension						
			H	h	I	L	A	T	T1
L Light PN315	BLK-DSAP-06L-01GED	6	14.0	14.0	14.0	24.5	8.0	PF 1/8	M12 x 1.5
	BLK-DSAP-08L-02GED	8	17.0	19.0	19.0	29.5	12.0	PF 1/4	M14 x 1.5
	BLK-DSAP-10L-02GED	10	19.0	19.0	19.0	27.5	12.0	PF 1/4	M16 x 1.5
	BLK-DSAP-12L-03GED	12	22.0	22.0	22.0	34.0	12.0	PF 3/8	M18 x 1.5
	BLK-DSAP-15L-04GED	15	27.0	27.0	27.0	32.0	14.0	PF 1/2	M22 x 1.5
PN 160	BLK-DSAP-18L-04GED	18	32.0	27.0	27.0	31.5	14.0	PF 1/2	M26 x 1.5
	BLK-DSAP-22L-06GED	22	36.0	32.0	32.0	32.5	16.0	PF 3/4	M30 x 2.0
	BLK-DSAP-28L-08GED	28	41.0	41.0	40.0	35.0	18.0	PF 1	M36 x 2.0
	BLK-DSAP-35L-10GED	35	50.0	50.0	50.0	42.5	20.0	PF 1 1/4	M45 x 2.0
S Heavy PB 630	BLK-DSAP-42L-12GED	42	60.0	55.0	55.0	46.5	22.0	PF 1 1/2	M52 x 2.0
	BLK-DSAP-06S-02GED	6	17.0	19.0	19.0	27.0	12.0	PF 1/4	M14 x 1.5
	BLK-DSAP-08S-02GED	8	19.0	19.0	19.0	29.5	12.0	PF 1/4	M16 x 1.5
	BLK-DSAP-10S-03GED	10	22.0	22.0	22.0	32.0	12.0	PF 3/8	M18 x 1.5
	BLK-DSAP-12S-03GED	12	24.0	22.0	22.0	34.0	12.0	PF 3/8	M20 x 1.5
PN 400	BLK-DSAP-14S-04GED	14	27.0	27.0	27.0	36.5	14.0	PF 1/2	M22 x 1.5
	BLK-DSAP-16S-04GED	16	30.0	27.0	27.0	37.0	14.0	PF 1/2	M24 x 1.5
	BLK-DSAP-20S-06GED	20	36.0	32.0	32.0	43.0	16.0	PF 3/4	M30 x 2.0
	BLK-DSAP-25S-08GED	25	46.0	41.0	40.0	48.0	18.0	PF 1	M36 x 2.0
PN 315	BLK-DSAP-30S-10GED	30	50.0	50.0	50.0	51.0	20.0	PF 1 1/4	M42 x 2.0
	BLK-DSAP-38S-12GED	38	60.0	55.0	55.0	60.0	22.0	PF 1 1/2	M52 x 2.0



Metric Parallel Thread Type

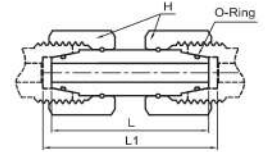
Series	Part Number	Tube O.D	Dimension						
			H	h	I	L	A	T	T1
L Light PN315	BLK-DSAP-06L-M10ED	6	14.0	14.0	14.0	24.5	8.0	M10 x 1.0	M12 x 1.5
	BLK-DSAP-08L-M12ED	8	17.0	19.0	17.0	26.5	12.0	M12 x 1.5	M14 x 1.5
	BLK-DSAP-10L-M14ED	10	19.0	19.0	19.0	27.5	12.0	M14 x 1.5	M16 x 1.5
	BLK-DSAP-12L-M16ED	12	22.0	22.0	22.0	30.5	12.0	M16 x 1.5	M18 x 1.5
	BLK-DSAP-15L-M18ED	15	27.0	24.0	24.0	31.5	12.0	M18 x 1.5	M22 x 1.5
PN 160	BLK-DSAP-18L-M22ED	18	32.0	27.0	27.0	31.5	14.0	M22 x 1.5	M26 x 1.5
	BLK-DSAP-22L-M26ED	22	36.0	32.0	32.0	32.5	16.0	M26 x 1.5	M30 x 2.0
	BLK-DSAP-28L-M33ED	28	41.0	41.0	40.0	35.0	18.0	M33 x 2.0	M36 x 2.0
	BLK-DSAP-35L-M42ED	35	50.0	50.0	50.0	42.5	20.0	M42 x 2.0	M45 x 2.0
S Heavy PB 630	BLK-DSAP-42L-M48ED	42	60.0	55.0	55.0	46.5	22.0	M48 x 2.0	M52 x 2.0
	BLK-DSAP-06S-M12ED	6	17.0	17.0	17.0	27.0	12.0	M12 x 1.5	M14 x 1.5
	BLK-DSAP-08S-M14ED	8	19.0	19.0	19.0	29.5	12.0	M14 x 1.5	M16 x 1.5
	BLK-DSAP-10S-M16ED	10	22.0	22.0	22.0	32.0	12.0	M16 x 1.5	M18 x 1.5
	BLK-DSAP-12S-M18ED	12	24.0	24.0	24.0	34.0	12.0	M18 x 1.5	M20 x 1.5
PN 400	BLK-DSAP-14S-M20ED	14	27.0	27.0	26.0	36.5	14.0	M20 x 1.5	M22 x 1.5
	BLK-DSAP-16S-M22ED	16	30.0	27.0	27.0	37.0	14.0	M22 x 1.5	M24 x 1.5
	BLK-DSAP-20S-M27ED	20	36.0	32.0	32.0	43.0	16.0	M27 x 2.0	M30 x 2.0
	BLK-DSAP-25S-M33ED	25	46.0	41.0	40.0	48.0	18.0	M33 x 2.0	M36 x 2.0
PN 315	BLK-DSAP-30S-M42ED	30	50.0	50.0	50.0	51.0	20.0	M42 x 2.0	M45 x 2.0
	BLK-DSAP-38S-M48ED	38	60.0	55.0	55.0	60.0	22.0	M48 x 2.0	M52 x 2.0

• All dimensions in millimeters unless specified as "inch". Dimension are for reference only, subject to change
 • Dimensions given approximate length with tightened nut.

DSL

Swivel Union

Series	Part Number	Tube O.D	Dimension		
			H	L	L1
L	BLK-DSL-06L	6	17.0	34.0	36.0
Light	BLK-DSL-08L	8	17.0	34.0	36.0
PN500	BLK-DSL-10L	10	19.0	36.0	37.0
PB 400	BLK-DSL-12L	12	22.0	36.0	37.0
	BLK-DSL-15L	15	27.0	39.0	40.0
	BLK-DSL-18L	18	32.0	40.5	42.5
PB 250	BLK-DSL-22L	22	36.0	45.0	47.0
	BLK-DSL-28L	28	46.0	47.0	49.0
	BLK-DSL-35L	35	50.0	53.0	58.0
	BLK-DSL-42L	42	60.0	53.0	59.0
S	BLK-DSL-06S	6	17.0	37.0	39.0
Heavy	BLK-DSL-08S	8	19.0	37.0	39.0
PB 800	BLK-DSL-10S	10	22.0	41.0	43.0
PN 630	BLK-DSL-12S	12	24.0	43.0	44.0
	BLK-DSL-14S	14	27.0	45.0	48.0
	BLK-DSL-16S	16	30.0	46.0	50.0
PN 400	BLK-DSL-20S	20	36.0	55.0	60.0
	BLK-DSL-25S	25	46.0	58.0	66.0
	BLK-DSL-30S	30	50.0	62.0	73.0
	BLK-DSL-38S	38	60.0	67.0	83.0

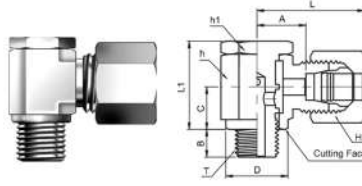


- All dimensions in millimeters unless specified as "inch". Dimension are for reference only, subject to change
- Dimensions given approximate length with tightened nut.

DBE-G/M (BSP Parallel/Metric Parallel)

Banjo Elbow

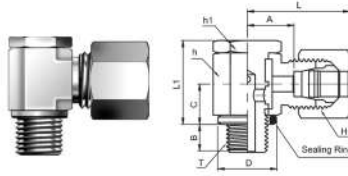
BSP Parallel Thread Type



For Tube O.D. up to 15mm

Series	Part Number	Tube O.D	Dimension									
			D	H	h	h1	L	L1	A	B	C	T
L Light PB 250	BLK-DBE-06L-01G	6	14.0	14.0	14.0	14.0	25.0	21.0	10.5	6.0	10.0	PF 1/8
	BLK-DBE-08L-02G	8	18.0	17.0	19.0	19.0	28.0	27.0	13.0	9.0	13.0	PF 1/4
	BLK-DBE-10L-02G	10	18.0	19.0	19.0	19.0	29.0	27.0	14.0	9.0	13.0	PF 1/4
	BLK-DBE-12L-03G	12	22.0	22.0	22.0	22.0	30.0	32.0	15.5	9.0	15.0	PF 3/8
	BLK-DBE-15L-04G	15	26.0	27.0	27.0	27.0	34.0	37.5	19.0	11.0	18.0	PF 1/2
PB 160	BLK-DBE-18L-04G	18	26.0	32.0	30.0	27.0	37.0	44.0	20.5	11.0	21.5	PF 1/2
	BLK-DBE-22L-06G	22	32.0	36.0	36.0	32.0	42.0	49.0	25.5	13.0	24.0	PF 3/4
S Heavy PB 250	BLK-DBE-06S-02G	6	18.0	17.0	19.0	19.0	30.0	27.0	15.0	9.0	13.0	PF 1/4
	BLK-DBE-08S-02G	8	18.0	19.0	19.0	19.0	30.0	27.0	15.0	9.0	13.0	PF 1/4
	BLK-DBE-10S-03G	10	22.0	22.0	22.0	22.0	32.0	32.0	16.0	9.0	15.0	PF 3/8
	BLK-DBE-12S-03G	12	22.0	24.0	24.0	24.0	33.0	37.0	17.0	9.0	18.0	PF 3/8
	BLK-DBE-14S-04G	14	26.0	27.0	27.0	27.0	38.0	37.0	20.0	11.0	18.0	PF 1/2
PB 160	BLK-DBE-16S-04G	16	26.0	30.0	30.0	27.0	40.0	44.0	21.5	11.0	21.5	PF 1/2
	BLK-DBE-20S-06G	20	32.0	36.0	36.0	32.0	46.0	49.0	24.5	13.0	24.0	PF 3/4

Metric Parallel Thread Type



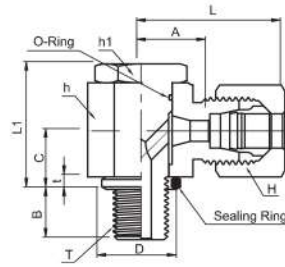
For Tube O.D. 16mm and larger

Series	Part Number	Tube O.D	Dimension									
			D	H	h	h1	L	L1	A	B	C	T
L Light PB 250	BLK-DBE-06L-M10	6	14.0	14.0	14.0	14.0	25.0	21.5	10.5	6.0	10.0	M10 x 1.0
	BLK-DBE-08L-M12	8	17.0	17.0	17.0	17.0	27.0	25.0	12.0	9.0	12.0	M12 x 1.5
	BLK-DBE-10L-M14	10	19.0	19.0	19.0	19.0	29.0	27.0	14.0	9.0	13.0	M14 x 1.5
	BLK-DBE-12L-M16	12	21.0	22.0	22.0	22.0	30.0	32.0	15.5	9.0	15.0	M16 x 1.5
	BLK-DBE-15L-M18	15	23.0	27.0	24.0	24.0	33.0	37.5	17.5	9.0	18.0	M18 x 1.5
PB 160	BLK-DBE-18L-M22	18	27.0	32.0	30.0	27.0	37.0	44.0	20.5	11.0	21.5	M22 x 1.5
	BLK-DBE-22L-M26	22	31.0	36.0	36.0	32.0	42.0	49.0	25.5	13.0	24.0	M26 x 1.5
S Heavy PB 250	BLK-DBE-06S-M12	6	17.0	17.0	17.0	17.0	29.0	25.0	14.0	9.0	12.0	M12 x 1.5
	BLK-DBE-08S-M14	8	19.0	19.0	19.0	19.0	30.0	27.0	15.0	9.0	13.0	M14 x 1.5
	BLK-DBE-10S-M16	10	21.0	22.0	22.0	22.0	32.0	32.0	16.0	9.0	15.0	M16 x 1.5
	BLK-DBE-12S-M18	12	23.0	24.0	24.0	24.0	33.0	37.0	17.0	9.0	18.0	M18 x 1.5
	BLK-DBE-14S-M20	14	25.0	27.0	27.0	27.0	38.0	37.0	20.0	11.0	18.0	M20 x 1.5
PB 160	BLK-DBE-16S-M22	16	27.0	30.0	30.0	27.0	40.0	44.0	21.5	11.0	21.5	M22 x 1.5
	BLK-DBE-20S-M27	20	32.0	36.0	36.0	32.0	46.0	49.0	24.5	13.0	24.0	M27 x 2.0

• All dimensions in millimeters unless specified as "inch". Dimension are for reference only, subject to change
 • Dimensions given approximate length with tightened nut.

DHBE-G/M (BSP Parallel/Metric Parallel)

High Pressure Banjo Elbow



BSP Parallel Thread Type

Series	Part Number	Tube O.D	Dimension										
			D	H	h	h1	L	L1	A	B	C	t	T
L Light PB 315	BLK-DHBE-06L-01G	6	14.0	14.0	17.0	17.0	27.0	24.0	12.0	8.0	10.5	2.5	PF 1/8
	BLK-DHBE-08L-02G	8	18.0	17.0	22.0	19.0	29.0	30.0	14.5	12.0	14.0	3.0	PF 1/4
	BLK-DHBE-10L-02G	10	18.0	19.0	22.0	19.0	30.0	30.0	15.5	12.0	14.0	3.0	PF 1/4
	BLK-DHBE-12L-03G	12	22.0	22.0	27.0	24.0	33.0	36.0	18.0	12.0	16.5	3.0	PF 3/8
	BLK-DHBE-15L-04G	15	26.0	27.0	32.0	30.0	37.0	45.0	21.5	14.0	21.5	4.5	PF 1/2
PB 160	BLK-DHBE-18L-04G	18	26.0	32.0	32.0	30.0	37.0	45.0	21.0	14.0	21.5	4.5	PF 1/2
	BLK-DHBE-22L-06G	22	32.0	36.0	41.0	36.0	44.0	53.0	27.5	16.0	24.0	3.5	PF 3/4
	BLK-DHBE-28L-08G	28	39.0	41.0	50.0	46.0	49.0	66.0	32.0	18.0	30.5	3.5	PF 1
	BLK-DHBE-35L-10G	35	49.0	50.0	60.0	55.0	58.0	76.0	36.0	20.0	35.5	3.5	PF 1 1/4
S Heavy PB 400	BLK-DHBE-42L-12G	42	55.0	60.0	70.0	60.0	63.0	87.0	40.5	22.0	40.5	3.5	PF 1 1/2
	BLK-DHBE-06S-02G	6	18.0	17.0	22.0	19.0	31.0	30.0	16.5	12.0	14.0	3.0	PF 1/4
	BLK-DHBE-08S-02G	8	18.0	19.0	22.0	19.0	31.0	30.0	16.5	12.0	14.0	3.0	PF 1/4
	BLK-DHBE-10S-03G	10	22.0	22.0	27.0	24.0	35.0	36.0	18.5	12.0	16.5	3.0	PF 3/8
	BLK-DHBE-12S-03G	12	22.0	24.0	27.0	24.0	35.0	36.0	18.5	12.0	16.5	3.0	PF 3/8
PB 250	BLK-DHBE-16S-04G	16	26.0	30.0	32.0	30.0	40.0	45.0	22.0	14.0	21.5	4.5	PF 1/2
	BLK-DHBE-20S-06G	20	32.0	36.0	41.0	36.0	48.0	53.0	26.5	16.0	24.0	3.5	PF 3/4
	BLK-DHBE-25S-08G	25	39.0	46.0	50.0	46.0	56.0	66.0	31.5	18.0	30.5	3.5	PF 1
	BLK-DHBE-30S-10G	30	49.0	50.0	60.0	55.0	64.0	76.0	37.0	20.0	34.5	3.5	PF 1 1/4
PB 250	BLK-DHBE-38S-12G	38	55.0	60.0	70.0	60.0	72.0	87.0	41.5	22.0	40.5	3.5	PF 1 1/2

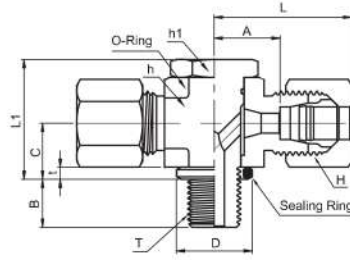
Metric Parallel Thread Type

Series	Part Number	Tube O.D	Dimension									
			D	H	h	h1	L	L1	A	B	C	T
L Light PB 250	BLK-DBE-06L-M10	6	14.0	14.0	14.0	14.0	25.0	21.5	10.5	6.0	10.0	M10 x 1.0
	BLK-DBE-08L-M12	8	17.0	17.0	17.0	17.0	27.0	25.0	12.0	9.0	12.0	M12 x 1.5
	BLK-DBE-10L-M14	10	19.0	19.0	19.0	19.0	29.0	27.0	14.0	9.0	13.0	M14 x 1.5
	BLK-DBE-12L-M16	12	21.0	22.0	22.0	22.0	30.0	32.0	15.5	9.0	15.0	M16 x 1.5
PB 160	BLK-DBE-15L-M18	15	23.0	27.0	24.0	24.0	33.0	37.5	17.5	9.0	18.0	M18 x 1.5
	BLK-DBE-18L-M22	18	27.0	32.0	30.0	27.0	37.0	44.0	20.5	11.0	21.5	M22 x 1.5
	BLK-DBE-22L-M26	22	31.0	36.0	36.0	32.0	42.0	49.0	25.5	13.0	24.0	M26 x 1.5
S Heavy PB 250	BLK-DBE-06S-M12	6	17.0	17.0	17.0	17.0	29.0	25.0	14.0	9.0	12.0	M12 x 1.5
	BLK-DBE-08S-M14	8	19.0	19.0	19.0	19.0	30.0	27.0	15.0	9.0	13.0	M14 x 1.5
	BLK-DBE-10S-M16	10	21.0	22.0	22.0	22.0	32.0	32.0	16.0	9.0	15.0	M16 x 1.5
	BLK-DBE-12S-M18	12	23.0	24.0	24.0	24.0	33.0	37.0	17.0	9.0	18.0	M18 x 1.5
PB 160	BLK-DBE-14S-M20	14	25.0	27.0	27.0	27.0	38.0	37.0	20.0	11.0	18.0	M20 x 1.5
	BLK-DBE-16S-M22	16	27.0	30.0	30.0	27.0	40.0	44.0	21.5	11.0	21.5	M22 x 1.5
	BLK-DBE-20S-M27	20	32.0	36.0	36.0	32.0	46.0	49.0	24.5	13.0	24.0	M27 x 2.0

• All dimensions in millimeters unless specified as "inch". Dimension are for reference only, subject to change
 • Dimensions given approximate length with tightened nut.

DHBT-G/M (BSP Parallel/Metric Parallel)

High Pressure Banjo Tee



BSP Parallel Thread Type

Series	Part Number	Tube O.D	Dimension										
			D	H	h	h1	L	L1	A	B	C	t	T
L Light PB 315	BLK-DHBT-06L-01G	6	14.0	14.0	17.0	17.0	27.0	24.0	12.0	8.0	10.5	2.5	PF 1/8
	BLK-DHBT-08L-02G	8	18.0	17.0	22.0	19.0	29.0	30.0	14.5	12.0	14.0	3.0	PF 1/4
	BLK-DHBT-10L-02G	10	18.0	19.0	22.0	19.0	30.0	30.0	15.5	12.0	14.0	3.0	PF 1/4
	BLK-DHBT-12L-03G	12	22.0	22.0	27.0	24.0	33.0	36.0	18.0	12.0	16.5	3.0	PF 3/8
	BLK-DHBT-15L-04G	15	26.0	27.0	32.0	30.0	37.0	45.0	21.5	14.0	21.5	4.5	PF 1/2
PB 160	BLK-DHBT-18L-04G	18	26.0	32.0	32.0	30.0	37.0	45.0	21.0	14.0	21.5	4.5	PF 1/2
	BLK-DHBT-22L-06G	22	32.0	36.0	41.0	36.0	44.0	53.0	27.5	16.0	24.0	3.5	PF 3/4
	BLK-DHBT-28L-08G	28	39.0	41.0	50.0	46.0	49.0	66.0	32.0	18.0	30.5	3.5	PF 1
	BLK-DHBT-35L-10G	35	49.0	50.0	60.0	55.0	58.0	76.0	36.0	20.0	35.5	3.5	PF 1 1/4
S Heavy PB 400	BLK-DHBT-42L-12G	42	55.0	60.0	70.0	60.0	63.0	87.0	40.5	22.0	40.5	3.5	PF 1 1/2
	BLK-DHBT-06S-02G	6	18.0	17.0	22.0	19.0	31.0	30.0	16.5	12.0	14.0	3.0	PF 1/4
	BLK-DHBT-08S-02G	8	18.0	19.0	22.0	19.0	31.0	30.0	16.5	12.0	14.0	3.0	PF 1/4
	BLK-DHBT-10S-03G	10	22.0	22.0	27.0	24.0	35.0	36.0	18.5	12.0	16.5	3.0	PF 3/8
	BLK-DHBT-12S-03G	12	22.0	24.0	27.0	24.0	35.0	36.0	18.5	12.0	16.5	3.0	PF 3/8
PB 250	BLK-DHBT-16S-04G	16	26.0	30.0	32.0	30.0	40.0	45.0	22.0	14.0	21.5	4.5	PF 1/2
	BLK-DHBT-20S-06G	20	32.0	36.0	41.0	36.0	48.0	53.0	26.5	16.0	24.0	3.5	PF 3/4
	BLK-DHBT-25S-08G	25	39.0	46.0	50.0	46.0	56.0	66.0	31.5	18.0	30.5	3.5	PF 1
PB 250	BLK-DHBT-30S-10G	30	49.0	50.0	60.0	55.0	64.0	76.0	37.0	20.0	35.5	3.5	PF 1 1/4
	BLK-DHBT-38S-12G	38	55.0	60.0	70.0	60.0	72.0	87.0	41.5	22.0	40.5	3.5	PF 1 1/2

Metric Parallel Thread Type

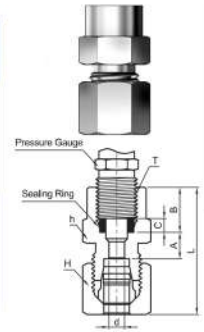
Series	Part Number	Tube O.D	Dimension										
			D	H	h	h1	L	L1	A	B	C	t	T
L Light PB 315	BLK-DHBT-06L-M10	6	14.0	14.0	17.0	17.0	27.0	24.0	12.0	8.0	10.5	2.5	M10 x 1.0
	BLK-DHBT-08L-M12	8	17.0	17.0	22.0	19.0	29.0	30.0	14.5	12.0	14.0	3.0	M12 x 1.5
	BLK-DHBT-10L-M14	10	19.0	19.0	22.0	19.0	30.0	30.0	15.5	12.0	14.0	3.0	M14 x 1.5
	BLK-DHBT-12L-M16	12	21.0	22.0	27.0	24.0	33.0	36.0	18.0	12.0	16.5	3.0	M16 x 1.5
	BLK-DHBT-15L-M18	15	23.0	27.0	30.0	27.0	36.0	39.5	20.5	12.0	18.5	3.0	M18 x 1.5
PB 160	BLK-DHBT-18L-M22	18	27.0	32.0	32.0	30.0	37.0	45.0	21.0	14.0	21.5	4.5	M22 x 1.5
	BLK-DHBT-22L-M26	22	31.0	36.0	41.0	36.0	44.0	53.0	27.5	16.0	24.0	3.5	M26 x 1.5
	BLK-DHBT-28L-M12	28	39.0	41.0	50.0	46.0	49.0	66.0	32.0	18.0	30.5	3.5	M33 x 2.0
	BLK-DHBT-35L-M14	35	49.0	50.0	60.0	55.0	58.0	76.0	36.0	20.0	35.5	3.5	M42 x 2.0
S Heavy PB 400	BLK-DHBT-42L-M16	42	55.0	60.0	70.0	60.0	63.0	87.0	40.5	22.0	40.5	3.5	M48 x 2.0
	BLK-DHBT-06S-M12	6	17.0	17.0	22.0	19.0	31.0	30.0	16.5	12.0	14.0	3.0	M12 x 1.5
	BLK-DHBT-08S-M14	8	19.0	19.0	22.0	19.0	31.0	30.0	16.5	12.0	14.0	3.0	M14 x 1.5
	BLK-DHBT-10S-M16	10	21.0	22.0	27.0	24.0	35.0	36.0	18.5	12.0	16.5	3.0	M16 x 1.5
	BLK-DHBT-12S-M18	12	23.0	24.0	30.0	27.0	36.0	39.5	20.0	12.0	18.5	3.0	M18 x 1.5
PB 250	BLK-DHBT-16S-M22	16	27.0	30.0	32.0	30.0	40.0	45.0	22.0	14.0	21.5	4.5	M22 x 1.5
	BLK-DHBT-20S-M27	20	32.0	36.0	41.0	36.0	48.0	53.0	26.5	16.0	24.0	3.5	M27 x 2.0
	BLK-DHBT-25S-M33	25	39.0	46.0	50.0	46.0	56.0	66.0	31.5	18.0	30.5	3.5	M33 x 2.0
PB 250	BLK-DHBT-30S-M42	30	49.0	50.0	60.0	55.0	64.0	76.0	37.0	20.0	35.5	3.5	M42 x 2.0
	BLK-DHBT-38S-M48	38	55.0	60.0	70.0	60.0	72.0	87.0	41.5	22.0	40.5	3.5	M48 x 2.0

• All dimensions in millimeters unless specified as "inch". Dimension are for reference only, subject to change
 • Dimensions given approximate length with tightened nut.

DFGC-G (BSP Parallel)

Pressure Gauge Connector

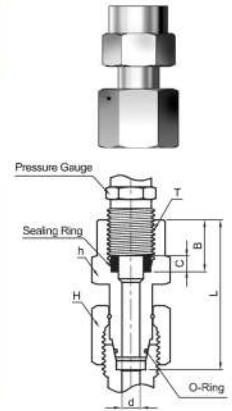
Series	Part Number	Tube O.D	Dimension							
			D	H	h	L	A	B	C	T
L Light PN 315	BLK-DFGC-06L-02G	6	2.5	14.0	19.0	37.0	7.5	14.5	4.5	PF 1/4
	BLK-DFGC-08L-02G	8	5.5	17.0	19.0	37.0	7.5	14.5	4.5	PF 1/4
	BLK-DFGC-10L-02G	10	5.5	19.0	19.0	38.0	8.5	14.5	4.5	PF 1/4
	BLK-DFGC-12L-02G	12	5.5	22.0	19.0	38.0	8.5	14.5	4.5	PF 1/4
S Heavy PN 630	BLK-DFGC-06S-04G	6	3.5	17.0	27.0	46.0	11.0	20.0	5.0	PF 1/2
	BLK-DFGC-08S-04G	8	3.5	19.0	27.0	46.0	11.0	20.0	5.0	PF 1/2
	BLK-DFGC-10S-04G	10	7.0	22.0	27.0	47.0	10.5	20.0	5.0	PF 1/2
	BLK-DFGC-12S-04G	12	7.0	24.0	27.0	47.0	10.5	20.0	5.0	PF 1/2



DSGC-G (BSP Parallel)

Pressure Gauge Swivel Connector

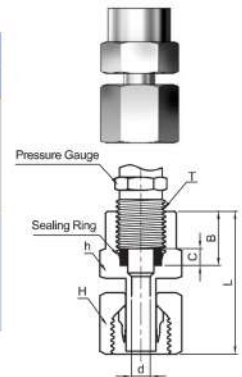
Series	Part Number	Tube O.D	Dimension							
			D	H	h	L	B	C	T	
L Light PN 315	BLK-DSGC-06L-02G	6	2.5	14.0	19.0	35.5	14.5	4.5	PF 1/4	
	BLK-DSGC-08L-02G	8	4.0	17.0	19.0	35.5	14.5	4.5	PF 1/4	
	BLK-DSGC-10L-02G	10	5.5	19.0	19.0	36.0	14.5	4.5	PF 1/4	
	BLK-DSGC-12L-02G	12	5.5	22.0	19.0	36.0	14.5	4.5	PF 1/4	
S Heavy PN 630	BLK-DSGC-06S-02G	6	2.5	17.0	19.0	35.5	14.5	4.5	PF 1/4	
	BLK-DSGC-08S-02G	8	4.0	19.0	19.0	35.5	14.5	4.5	PF 1/4	
	BLK-DSGC-10S-02G	10	6.0	22.0	19.0	36.0	14.5	4.5	PF 1/4	
	BLK-DSGC-12S-02G	12	7.0	24.0	19.0	39.0	14.5	4.5	PF 1/4	
	BLK-DSGC-06S-04G	6	2.5	17.0	27.0	42.5	20.0	5.0	PF 1/2	
	BLK-DSGC-08S-04G	8	4.0	19.0	27.0	43.0	20.0	5.0	PF 1/2	
	BLK-DSGC-10S-04G	10	6.0	22.0	27.0	43.5	20.0	5.0	PF 1/2	
	BLK-DSGC-12S-04G	12	7.0	24.0	27.0	45.0	20.0	5.0	PF 1/2	



DGAP-G (BSP Parallel)

Gauge Adaptor

Series	Part Number	Tube O.D	Dimension							
			D	H	h	L	B	C	T	
L Light PN 315	BLK-DGAP-06L-02G	6	3.5	14.0	19.0	38.0	14.5	4.5	PF 1/4	
	BLK-DGAP-08L-02G	8	5.5	17.0	19.0	38.0	14.5	4.5	PF 1/4	
	BLK-DGAP-10L-02G	10	7.5	19.0	19.0	39.5	14.5	4.5	PF 1/4	
	BLK-DGAP-12L-02G	12	9.0	22.0	19.0	40.5	14.5	4.5	PF 1/4	
S Heavy PN 630	BLK-DGAP-06S-04G	6	3.5	17.0	27.0	45.0	20.0	5.0	PF 1/2	
	BLK-DGAP-08S-04G	8	4.5	19.0	27.0	45.0	20.0	5.0	PF 1/2	
	BLK-DGAP-10S-04G	10	6.5	22.0	27.0	47.0	20.0	5.0	PF 1/2	
	BLK-DGAP-12S-04G	12	7.5	24.0	27.0	47.5	20.0	5.0	PF 1/2	

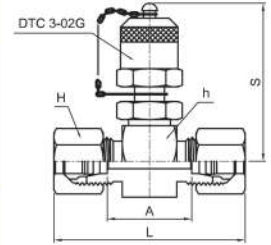


- All dimensions in millimeters unless specified as "inch". Dimension are for reference only, subject to change
- Dimensions given approximate length with tightened nut.

DTPC

Tee Test Point Connector

Series	Part Number	Tube O.D	Dimension				
			H	h	L	A	S
L Light PN 315	BLK-DTPC-3-06L	6	14	24	50	20.5	50
	BLK-DTPC-3-08L	8	17	24	50	20.5	50
	BLK-DTPC-3-10L	10	19	24	52	22.5	50
	BLK-DTPC-3-12L	12	22	24	52	22.5	50
	BLK-DTPC-3-15L	15	27	30	55	24.5	53
	BLK-DTPC-3-18L	18	32	32	56	23.5	54
PB 160	BLK-DTPC-3-22L	22	36	36	60	27.5	56
	BLK-DTPC-3-28L	28	41	41	61	27.5	58
	BLK-DTPC-3-35L	35	50	46	69	25.5	61
	BLK-DTPC-3-42L	42	60	55	70	24.5	65
S Heavy PN 630	BLK-DTPC-3-06S	6	17	24	54	24.5	50
	BLK-DTPC-3-08S	8	19	24	54	24.5	50
	BLK-DTPC-3-10S	10	22	24	56	23.5	50
	BLK-DTPC-3-12S	12	24	24	56	23.5	50
	BLK-DTPC-3-14S	14	27	27	62	26.5	51
PN 400	BLK-DTPC-3-16S	16	30	30	62	25.5	53
	BLK-DTPC-3-20S	20	36	36	69	25.5	56
	BLK-DTPC-3-25S	25	46	41	75	26.5	58
	BLK-DTPC-3-30S	30	50	46	81	27.5	61
PN 315	BLK-DTPC-3-38S	38	60	55	90	29	65

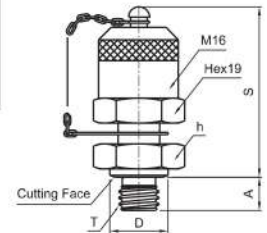


DTC

Test Coupling

Series	Part Number	Dimension				
		h	D	S	A	T
PB 630	BLK-DTC-3-01G	17	14	41	8	PF 1/8
	BLK-DTC-3-02G	19	18	41	10	PF 1/4
	BLK-DTC-3-03G	22	22	41	12	PF 3/8
	BLK-DTC-3-04G	27	26	41	14	PF 1/2
	BLK-DTC-3-M10	17	14	41	8	M10 x 1.0
	BLK-DTC-3-M12	17	17	41	12	M12 x 1.5
	BLK-DTC-3-M14	19	19	41	12	M14 x 1.5
	BLK-DTC-3-M16	22	21	41	12	M16 x 1.5

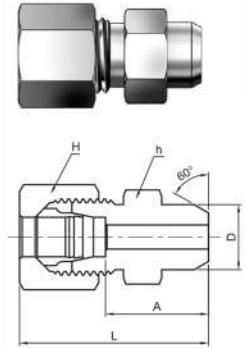
- All dimensions in millimeters unless specified as "inch". Dimension are for reference only, subject to change
- Dimensions given approximate length with tightened nut.



DWC

Welding Connector

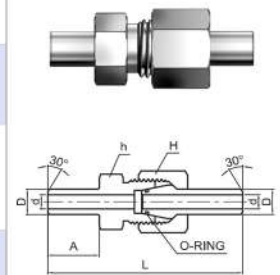
Series	Part Number	Tube O.D	Dimension				
			D	H	h	L	A
L Light PN 315	BLK-DWC-06L	6	10	14	12	29	14
	BLK-DWC-08L	8	12	17	14	31	16
	BLK-DWC-10L	10	14	19	17	33	18
	BLK-DWC-12L	12	16	22	19	33	18
	BLK-DWC-15L	15	19	27	22	37	22
PB 160	BLK-DWC-18L	18	22	32	27	40	23.5
	BLK-DWC-22L	22	27	36	32	45	28.5
	BLK-DWC-28L	28	32	41	41	47	30.5
	BLK-DWC-35L	35	40	50	46	54	32.5
S Heavy PN 630	BLK-DWC-42L	42	46	60	55	58	35
	BLK-DWC-06S	6	11	17	14	34	19
	BLK-DWC-08S	8	13	19	17	36	21
	BLK-DWC-10S	10	15	22	19	39	22.5
PN 400	BLK-DWC-12S	12	17	24	22	41	24.5
	BLK-DWC-14S	14	19	27	24	45	27
	BLK-DWC-16S	16	21	30	27	45	26.5
	BLK-DWC-20S	20	26	36	32	51	29.5
PN 315	BLK-DWC-25S	25	31	46	41	56	32
	BLK-DWC-30S	30	36	50	46	62	35.5
	BLK-DWC-38S	38	44	60	55	69	38



DAWC

Welding Connector with DWN

Series S MAX, Pressure	Part Number	Tube O.D	Dimension				
			D	H	h	L	A
PB248	BLK-DAWC-10 x 1.0		8				
PB357	BLK-DAWC-10 x 1.5	10	7	22	19	58	10
PB458	BLK-DAWC-10 x 2.0		6				
PB303	BLK-DAWC-12 x 1.5		9				
PB391	BLK-DAWC-12 x 2.0	12	8	24	22	65	15
PB474	BLK-DAWC-12 x 2.5		7				
PB234	BLK-DAWC-16 x 1.5		13				
PB303	BLK-DAWC-16 x 2.0	16	12	30	27	74.5	16.5
PB370	BLK-DAWC-16 x 2.5		11				
PB433	BLK-DAWC-16 x 3.0		10				
PB249	BLK-DAWC-20 x 2.0		16				
PB305	BLK-DAWC-20 x 2.5	20	15	36	32	84	19
PB357	BLK-DAWC-20 x 3.0		14				
PB458	BLK-DAWC-20 x 4.0		12				
PB292	BLK-DAWC-25 x 3.0		19				
PB378	BLK-DAWC-25 x 4.0	25	17	46	41	94.5	19.5
PB458	BLK-DAWC-25 x 5.0		15				
PB248	BLK-DAWC-30 x 3.0		24				
PB321	BLK-DAWC-30 x 4.0	30	22	50	46	102	23
PB391	BLK-DAWC-30 x 5.0		20				
PB460	BLK-DAWC-30 x 6.0		18				
PB260	BLK-DAWC-38 x 4.0		30				
PB318	BLK-DAWC-38 x 5.0	38	28	60	55	111	23
PB373	BLK-DAWC-38 x 6.0		26				
PB427	BLK-DAWC-38 x 7.0		24				

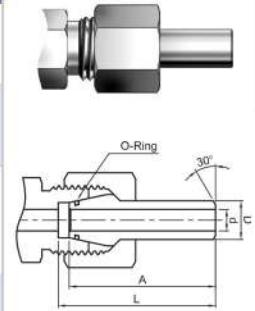


* All dimensions in millimeters unless specified as "inch". Dimension are for reference only, subject to change
 * Dimensions given approximate length with tightened nut.

DWN

Welding Nipple

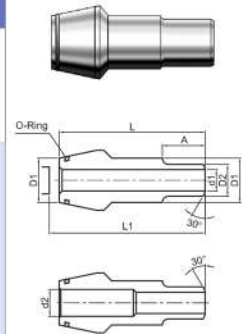
Pressure Rating		Part Number	Tube O.D	Dimension		
Fittings	DWN & Tube			D	L	A
PN630	PB 248	BLK-DWN-10 x 1.0	10	8	35.5	33
	PB 357	BLK-DWN-10 x 1.5		7		
	PB 458	BLK-DWN-10 x 2.0		6		
PN630	PB 303	BLK-DWN-12 x 1.5	12	9	35.5	33
	PB 391	BLK-DWN-12 x 2.0		8		
	PB 474	BLK-DWN-12 x 2.5		7		
PN400	PB 234	BLK-DWN-16 x 1.5	16	13	42.5	39
	PB 303	BLK-DWN-16 x 2.0		12		
	PB 370	BLK-DWN-16 x 2.5		11		
	PB 433	BLK-DWN-16 x 3.0		10		
PN400	PB 249	BLK-DWN-20 x 2.0	20	16	47.5	43.5
	PB 303	BLK-DWN-20 x 2.5		15		
	PB 357	BLK-DWN-20 x 3.0		14		
	PB 458	BLK-DWN-20 x 4.0		12		
PN400	PB 292	BLK-DWN-25 x 3.0	25	19	55	49.5
	PB 378	BLK-DWN-25 x 4.0		17		
	PB 458	BLK-DWN-25 x 5.0		15		
PN400	PB 248	BLK-DWN-30 x 3.0	30	24	58.5	51.5
	PB 321	BLK-DWN-30 x 4.0		22		
	PB 391	BLK-DWN-30 x 5.0		20		
	PB 460	BLK-DWN-30 x 6.0		18		
PN315	PB 260	BLK-DWN-38 x 4.0	38	30	66	56.5
	PB 318	BLK-DWN-38 x 5.0		28		
	PB 373	BLK-DWN-38 x 6.0		26		
	PB 427	BLK-DWN-38 x 7.0		24		



DRWN

Reducing Welding

Pressure Rating		Part Number	Tube O.D		Dimension				
Fittings	DWN & Tube		D1	D2	d1	d2	L1	L	A
PN630	PB 526	BLK-DRWN-10- 6 x 1.5	10	6	3	5	37.5	35	12
	PB 526	BLK-DRWN-10- 8 x 2.0	10	8	4	-	37.5	35	12
	PB 526	BLK-DRWN-12- 8 x 2.0	12	8	4	6	37.5	35	14
	PB 357	BLK-DRWN-12-10 x 1.5	12	10	7	-	37.5	35	14
PN400	PB 474	BLK-DRWN-16-12 x 2.5	16	12	7	-	46.5	43	15
	PB 474	BLK-DRWN-20-12 x 2.5	20	12	7	-	51.5	47.5	15
	PB 433	BLK-DRWN-20-16 x 3.0	20	16	10	-	53.5	49.5	17
	PB 433	BLK-DRWN-25-16 x 3.0	25	16	10	-	56.5	51	17
	PB 458	BLK-DRWN-25-20 x 4.0	25	20	12	-	59.5	54	20
	PB 303	BLK-DRWN-30-16 x 2.0	30	16	12	-	67	60	17
	PB 303	BLK-DRWN-30-20 x 2.5	30	20	15	-	70	63	20
	PB 292	BLK-DRWN-30-25 x 3.0	30	25	19	-	70	63	20
PN315	PB 303	BLK-DRWN-38-16 x 2.0	38	16	12	-	79	69.5	17
	PB 303	BLK-DRWN-38-20 x 2.5	38	20	15	-	82	72.5	20
	PB 292	BLK-DRWN-38-25 x 3.0	38	25	19	-	82	72.5	20
	PB 321	BLK-DRWN-38-30 x 4.0	38	30	22	-	82	72.5	20



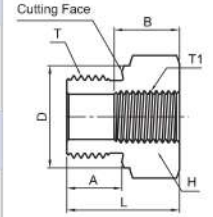
* All dimensions in millimeters unless specified as "inch". Dimension are for reference only, subject to change
 * Dimensions given approximate length with tightened nut.

DMFC

Male Female Connector

BSP Parallel Thread Type

Series	Part Number	Dimension						
		H	D	L	A	B	T	T1
PB 630	BLK-DMFC-03G-01G	22	22	22.5	12	8	PF 3/8	PF 1/8
PB 630	BLK-DMFC-04G-01G	27	26	24	14	8	PF 1/2	PF 1/8
PB 400	BLK-DMFC-04G-02G	27	26	24	14	12	PF 1/2	PF 1/4
PB 400	BLK-DMFC-06G-02G	32	32	26	16	12	PF 3/4	PF 1/4
	BLK-DMFC-06G-03G	32	32	26	16	12	PF 3/4	PF 3/8
PB 400	BLK-DMFC-08G-02G	41	39	29	18	12	PF1	PF 1/4
	BLK-DMFC-08G-03G	41	39	29	18	12	PF1	PF 3/8
	BLK-DMFC-08G-04G	41	39	29	18	14	PF1	PF 1/2
PB 250	BLK-DMFC-10G-04G	50	49	32	20	14	PF 1 1/4	PF 1/2
	BLK-DMFC-10G-06G	50	49	32	20	16	PF 1 1/4	PF 3/4
PB 250	BLK-DMFC-12G-04G	55	55	36	22	14	PF 1 1/2	PF 1/2
	BLK-DMFC-12G-06G	55	55	36	22	16	PF 1 1/2	PF 3/4
	BLK-DMFC-12G-08G	55	55	36	22	18	PF 1 1/2	PF1

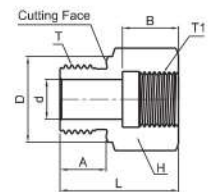


DMFG

Male Female Gauge Connector

BSP Parallel Thread Type.

Series	Part Number	Dimension							
		H	d	D	L	A	B	T	T1
PB 630	BLK-DMFC-01G-02G	19	4	14	31	8	17	PF 1/8	PF 1/4
	BLK-DMFC-01G-03G	24	4	14	32	8	17	PF 1/8	PF 3/8
	BLK-DMFC-02G-01G	19	5	18	28	12	12	PF 1/4	PF 1/8
	BLK-DMFC-02G-03G	24	5	18	36	12	17	PF 1/4	PF 3/8
	BLK-DMFC-02G-04G	30	5	18	40	12	20	PF 1/4	PF 1/2
PB 400	BLK-DMFC-02G-06G	36	5	18	43	12	22	PF 1/4	PF 3/4
PB 630	BLK-DMFC-03G-02G	22	8	22	36	12	17	PF 3/8	PF 1/4
	BLK-DMFC-03G-04G	30	8	22	41	12	20	PF 3/8	PF 1/2
PB 250	BLK-DMFC-03G-06G	36	8	22	44	12	22	PF 3/8	PF 3/4
PB 400	BLK-DMFC-04G-03G	27	12	26	36	14	17	PF 1/2	PF 3/8
	BLK-DMFC-04G-06G	36	12	26	46	14	22	PF 1/2	PF 3/4
PB 400	BLK-DMFC-04G-08G	41	12	26	49	14	24.5	PF 1/2	PF 1
	BLK-DMFC-04G-10G	55	10	26	53	14	26.5	PF 1/2	PF 1 1/4
PB 400	BLK-DMFC-06G-04G	32	16	32	41	16	20	PF 3/4	PF 1/2
	BLK-DMFC-06G-08G	41	16	32	51	16	24.5	PF 3/4	PF 1
	BLK-DMFC-06G-10G	55	16	32	55	16	26.5	PF 3/4	PF 1 1/4
PB 250	BLK-DMFC-06G-12G	60	16	32	57	16	28.5	PF 3/4	PF 1 1/2
PB 400	BLK-DMFC-08G-06G	41	20	39	47	18	22	PF 1	PF 3/4
PB 250	BLK-DMFC-08G-10G	55	20	39	57	18	26.5	PF 1	PF 1 1/4
	BLK-DMFC-08G-12G	60	20	39	59	18	28.5	PF 1	PF 1 1/2
	BLK-DMFC-10G-08G	50	25	49	52	20	24.5	PF 1 1/4	PF 1
	BLK-DMFC-10G-12G	60	25	49	60	20	28.5	PF 1 1/4	PF 1 1/2
	BLK-DMFC-12G-10G	55	32	55	58	22	26.5	PF 1 1/2	PF 1 1/4
	BLK-DMFC-16G-12G	70	40	68	62	24	28.5	PF 2	PF 1 1/2



* All dimensions in millimeters unless specified as "inch". Dimension are for reference only, subject to change

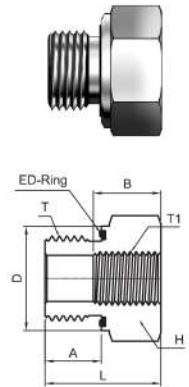
* Dimensions given approximate length with tightened nut.

DMFC-ED

Male Female Connector with ED-Ring

BSP Parallel Thread Type

Series	Part Number	Dimension						
		H	D	L	A	B	T	T1
PB 630	BLK-DMFC-03ED-01G	22	22	22.5	12	8	PF 3/8	PF 1/8
PB 630	BLK-DMFC-04ED-01G	27	26	24	14	8	PF 1/2	PF 1/8
PB 400	BLK-DMFC-04ED-02G	27	26	24	14	12	PF 1/2	PF 1/4
PB 400	BLK-DMFC-06ED-02G	32	32	26	16	12	PF 3/4	PF 1/4
	BLK-DMFC-06ED-03G	32	32	26	16	12	PF 3/4	PF 3/8
PB 400	BLK-DMFC-08ED-02G	41	39	29	18	12	PF1	PF 1/4
	BLK-DMFC-08ED-03G	41	39	29	18	12	PF1	PF 3/8
	BLK-DMFC-08ED-04G	41	39	29	18	14	PF1	PF 1/2
PB 250	BLK-DMFC-10ED-04G	50	49	32	20	14	PF 1 1/4	PF 1/2
	BLK-DMFC-10ED-06G	50	49	32	20	16	PF 1 1/4	PF 3/4
PB 250	BLK-DMFC-12ED-04G	55	55	36	22	14	PF 1 1/2	PF 1/2
	BLK-DMFC-12ED-06G	55	55	36	22	16	PF 1 1/2	PF 3/4
	BLK-DMFC-12ED-08G	55	55	36	22	18	PF 1 1/2	PF1

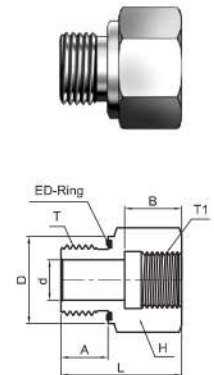


DMFG-ED

Male Female Gauge Connector with ED-Ring

BSP Parallel Thread Type.

Series	Part Number	Dimension							
		H	d	D	L	A	B	T	T1
PB 630	BLK-DMFC-01ED-02G	19	4	14	31	8	17	PF 1/8	PF 1/4
	BLK-DMFC-01ED-03G	24	4	14	32	8	17	PF 1/8	PF 3/8
	BLK-DMFC-02ED-01G	19	5	18	28	12	12	PF 1/4	PF 1/8
	BLK-DMFC-02ED-03G	24	5	18	36	12	17	PF 1/4	PF 3/8
	BLK-DMFC-02ED-04G	30	5	18	40	12	20	PF 1/4	PF 1/2
PB450	BLK-DMFC-02ED-06G	36	5	18	43	12	22	PF 1/4	PF 3/4
PB 630	BLK-DMFC-03ED-02G	22	8	22	36	12	17	PF 3/8	PF 1/4
	BLK-DMFC-03ED-04G	30	8	22	41	12	20	PF 3/8	PF 1/2
PB400	BLK-DMFC-03ED-06G	36	8	22	44	12	22	PF 3/8	PF 3/4
PB400	BLK-DMFC-04ED-03G	27	12	26	36	14	17	PF 1/2	PF 3/8
	BLK-DMFC-04ED-06G	36	12	26	46	14	22	PF 1/2	PF 3/4
	BLK-DMFC-04ED-08G	41	12	26	49	14	24.5	PF 1/2	PF 1
PB250	BLK-DMFC-04ED-10G	55	10	26	53	14	26.5	PF 1/2	PF 1 1/4
PB400	BLK-DMFC-06ED-04G	32	16	32	41	16	20	PF 3/4	PF 1/2
	BLK-DMFC-06ED-08G	41	16	32	51	16	24.5	PF 3/4	PF 1
	BLK-DMFC-06ED-10G	55	16	32	55	16	26.5	PF 3/4	PF 1 1/4
PB250	BLK-DMFC-06ED-12G	60	16	32	57	16	28.5	PF 3/4	PF 1 1/2
PB400	BLK-DMFC-08ED-06G	41	20	39	47	18	22	PF 1	PF 3/4
PB250	BLK-DMFC-08ED-10G	55	20	39	57	18	26.5	PF 1	PF 1 1/4
	BLK-DMFC-08ED-12G	60	20	39	59	18	28.5	PF 1	PF 1 1/2
	BLK-DMFC-10ED-08G	50	25	49	52	20	24.5	PF 1 1/4	PF 1
	BLK-DMFC-10ED-12G	60	25	49	60	20	28.5	PF 1 1/4	PF 1 1/2
	BLK-DMFC-12ED-10G	55	32	55	58	22	26.5	PF 1 1/2	PF 1 1/4
	BLK-DMFC-16ED-12G	70	40	68	62	24	28.5	PF 2	PF 1 1/2



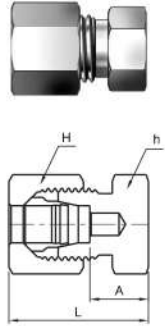
* All dimensions in millimeters unless specified as "inch". Dimension are for reference only, subject to change

* Dimensions given approximate length with tightened nut.

DC

Tube Cap

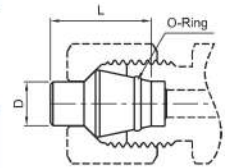
Series	Part Number	Tube O.D.	Dimension			
			L	A	T	T1
L Light PN 315	BLK-DC-06L	6	14	12	22	7.0
	BLK-DC-08L	8	17	14	23	8.0
	BLK-DC-10L	10	19	17	24	9.0
	BLK-DC-12L	12	22	19	25	10.0
	BLK-DC-15L	15	27	24	26	11.0
	BLK-DC-18L	18	32	27	28	11.5
PN 160	BLK-DC-22L	22	36	32	30	13.5
	BLK-DC-28L	28	41	41	31	14.5
	BLK-DC-35L	35	50	46	36	14.5
	BLK-DC-42L	42	60	55	39	16.0
S Heavy PN 630	BLK-DC-06S	6	17	14	26	11.0
	BLK-DC-08S	8	19	17	28	13.0
	BLK-DC-10S	10	22	19	29	12.5
	BLK-DC-12S	12	24	22	31	14.5
	BLK-DC-14S	14	27	24	34	16.0
PN 400	BLK-DC-16S	16	30	27	34	15.5
	BLK-DC-20S	20	36	32	39	17.5
	BLK-DC-25S	25	46	41	44	20.0
	BLK-DC-30S	30	50	46	47	20.5
PN 315	BLK-DC-38S	38	60	55	54	23.0



DP

Plug

Series	Part Number	Tube O.D.	Dimension	
			A	T1
L Light PN 315	BLK-DP-06LS	6	6	18.5
	BLK-DP-08LS	8	8	18.5
	BLK-DP-10LS	10	10	20
	BLK-DP-12LS	12	12	20.5
	BLK-DP-15L	15	15	20.5
	BLK-DP-18L	18	18	22.5
PN 160	BLK-DP-22L	22	22	25
	BLK-DP-28L	28	28	25.5
	BLK-DP-35L	35	35	30
	BLK-DP-42L	42	42	30
S Heavy PN 630	BLK-DP-14S	14	14	22.5
PN 400	BLK-DP-16S	16	16	23.5
	BLK-DP-20S	20	20	28.5
	BLK-DP-25S	25	25	29
	BLK-DP-30S	30	30	30.5
PN 315	BLK-DP-38S	38	38	33

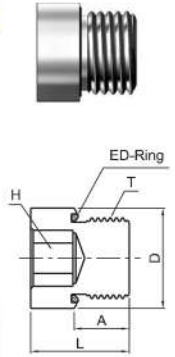


* All dimensions in millimeters unless specified as "inch". Dimension are for reference only, subject to change
 * Dimensions given approximate length with tightened nut.

DBP-GED/MED(BSP Parallel/Metric Parallel)

Blanking Plugs for Port with ED-Ring

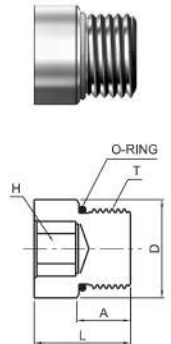
Series	Part Number	T		Dimension			
		M(Metric)	G(PF)	D	H	L	A
PB 400	BLK-DBP-01GED	M10 x 1.0	1/8	14.0	5	12.0	8
	-	M12 x 1.5	-	17.0	6	17.0	12
	BLK-DBP-02GED	M14 x 1.5	1/4	19.0	6	17.0	12
	BLK-DBP-03GED	M16 x 1.5	3/8	22.0	8	17.0	12
	-	M18 x 1.5	-	23.9	8	17.0	12
	-	M20 x 1.5	-	25.9	10	19.0	14
	BLK-DBP-04GED	M22 x 1.5	1/2	27.0	10	19.0	14
	-	M26 x 1.5	-	31.9	12	21.0	16
	BLK-DBP-06GED	M27 x 2.0	3/4	32.0	12	21.0	16
	BLK-DBP-08GED	M33 x 2.0	1	39.9	17	22.5	16
PB 250	BLK-DBP-10GED	M42 x 2.0	1 1/4	49.9	22	22.5	16
	BLK-DBP-12GED	M48 x 2.0	1 1/2	55.0	24	22.5	16



DBP-M (Metric Parallel)

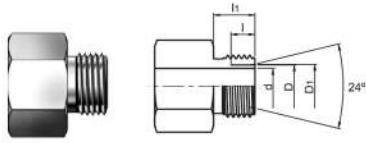
Blanking Plugs with O-Ring

Series	Part Number	T M(Metric)	Dimension			
			D	H	L	A
PB 630	BLK-DBP-M10	M10 x 1	13	5	14	10
	BLK-DBP-M12	M12 x 1.5	17	6	16.5	11.5
	BLK-DBP-M14	M14 x 1.5	19	6	16.5	11.5
	BLK-DBP-M16	M16 x 1.5	21	6	18	13
	BLK-DBP-M18	M18 x 1.5	23	8	19.5	14.5
	BLK-DBP-M22	M22 x 1.5	27	10	20.5	15.5
	BLK-DBP-M26	M26 x 1.5	31	12	21	16
	BLK-DBP-M27	M27 x 2	32	12	24	19
	BLK-DBP-M33	M33 x 2	38	17	25.5	19
	BLK-DBP-M42	M42 x 2	48	22	26	19.5

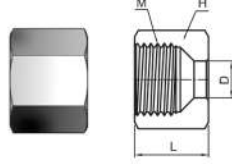


* All dimensions in millimeters unless specified as "inch". Dimension are for reference only, subject to change
 * Dimensions given approximate length with tightened nut.

Tube end Dimension



DNT NUT



DCR Cutting Ring



Series	Part Number	Cutting Ring Part Number	Tube O.D.	DN Size	Dimension							
					D	D1	d	H	L	M	I	I1
LL Very Light	BLK-DNT-04LL	BLK-DCR-04LL	4	3	4	5	3	10	11.5	M8 x 1.0	4	8
	BLK-DNT-06LL	BLK-DCR-06LL	6	4	6	7.5	4.5	12	12	M10 x 1.0	5.5	8
	BLK-DNT-08LL	BLK-DCR-08LL	8	6	8	9.5	6	14	12.5	M12 x 1.0	5.5	9
	BLK-DNT-10LL	BLK-DCR-10LL	10	8	10	11.5	8	17	12.5	M14 x 1.0	6	9
	BLK-DNT-12LL	BLK-DCR-12LL	12	10	12	13.5	10	19	13	M16 x 1.0	6	9
L Light	BLK-DNT-06L	BLK-DCR-06	6	4	6	8.1	4	14	15	M12 x 1.5	7	10
	BLK-DNT-08L	BLK-DCR-08	8	6	8	10.1	6	17	15	M14 x 1.5	7	10
	BLK-DNT-10L	BLK-DCR-10	10	8	10	12.3	8	19	16	M16 x 1.5	7	11
	BLK-DNT-12L	BLK-DCR-12	12	10	12	14.3	10	22	16	M18 x 1.5	7	11
	BLK-DNT-15L	BLK-DCR-15	15	12	15	17.3	12	27	17.5	M22 x 1.5	7	12
	BLK-DNT-18L	BLK-DCR-18	18	16	18	20.3	15	32	18	M26 x 1.5	7.5	12
	BLK-DNT-22L	BLK-DCR-22	22	20	22	24.3	19	36	20.5	M30 x 2.0	7.5	14
	BLK-DNT-28L	BLK-DCR-28	28	25	28	30.3	24	41	21	M36 x 2.0	7.5	14
	BLK-DNT-35L	BLK-DCR-35	35	32	35	38	30	50	24	M45 x 2.0	10.5	16
	BLK-DNT-42L	BLK-DCR-42	42	40	42	45	36	60	24	M52 x 2.0	11	16
S Heavy	BLK-DNT-06S	BLK-DCR-06	6	3	6	8.1	4	17	16.5	M14 x 1.5	7	12
	BLK-DNT-08S	BLK-DCR-08	8	4	8	10.1	5	19	16.5	M16 x 1.6	7	12
	BLK-DNT-10S	BLK-DCR-10	10	6	10	12.3	7	22	17.5	M18 x 1.5	7.5	12
	BLK-DNT-12S	BLK-DCR-12	12	8	12	14.3	8	24	18	M2 x 1.5	7.5	12
	BLK-DNT-14S	BLK-DCR-14	14	10	14	16.3	10	27	20.5	M22 x 1.5	8	14
	BLK-DNT-16S	BLK-DCR-16	16	12	16	18.3	12	30	21	M24 x 1.5	8.5	14
	BLK-DNT-20S	BLK-DCR-20	20	16	20	22.9	16	36	24	M30 x 2.0	10.5	16
	BLK-DNT-25S	BLK-DCR-25	25	20	25	27.9	20	46	27	M36 x 2.0	12	18
	BLK-DNT-30S	BLK-DCR-30	30	25	30	33	25	50	29.5	M42 x 2.0	13.5	20
		BLK-DNT-38S	BLK-DCR-38	38	32	38	41	32	60	32.5	M52 x 2.0	16

DED

ED- Ring

Part Number	For Male Thread	
BLK-DED-M8	M8 x 1.0	-
BLK-DED-M10	M10 x 1.0	PF 1/8
BLK-DED-M12	M12 x 1.5	-
BLK-DED-M14	M14 x 1.5	PF 1/4
BLK-DED-M16	M16 x 1.5	-
BLK-DED-03G	-	PF 3/8
BLK-DED-M18	M18 x 1.5	-
BLK-DED-M20	M20 x 1.5	-
BLK-DED-04G	-	PF 1/2
BLK-DED-M22	M22 x 1.5	--
BLK-DED-M26	M26 x 1.5	-
BLK-DED-M27	M27 x 2.0	PF 3/4
BLK-DED-M33	M33 x 2.0	PF 1
BLK-DED-M42	M42 x 2.0	PF 1 1/4
BLK-DED-M48	M48 x 2.0	PF 1 1/2

DOR

O-Ring

Part Number	For Male Thread	
BLK-DOR-4	4	1.5
BLK-DOR-6	6	1.5
BLK-DOR-7.5	7.5	1.5
BLK-DOR-9	9	1.5
BLK-DOR-10	10	2.0
BLK-DOR-12	12	2.0
BLK-DOR-15	15	2.0
BLK-DOR-16.3	16.3	2.4
BLK-DOR-20	20	2
BLK-DOR-20.3	20.3	2.4
BLK-DOR-25.3	25.3	2.4
BLK-DOR-26	26	2
BLK-DOR-32	32	2.5
BLK-DOR-33.3	33.3	2.4
BLK-DOR-38	38	2.5

* All dimensions in millimeters unless specified as "inch". Dimension are for reference only, subject to change
 * Dimensions given approximate length with tightened nut.

Products



Flange Adapter



Pipe Fitting



Flare Fitting



Valve Manifold



Thermowells



Check Valve



Tube Fitting



Needle Valve



Weld Fitting



Swivel Adapter



High Pressure



Gauge Root



BE-LOK INSTRUMENT FITTING INC

Corporate Address : #V-13 A, Qureshi Estate, Zilu Parab Road,
Near Chinchoti Naka, Village-Chinchoti, Naigaon,
District Palghar (401208), Maharashtra, India.
Tel : +91-9785579843,
+91-9156629351
Email : sales@be-lok.com, info@be-lok.com
Website : www.be-lok.com